

# BD Veterinary Products

Putting Comfort and Safety in Animal Care



# BD Hypodermic Products

## BD Veterinary Syringes VS600

Contains 600 syringes per case to ensure the most cost-effective package available.

Reference No.	Product Description	Packaging
<b>BD Veterinary Syringes</b>		
305660	3 mL BD Luer-Lok™ Syringe with 25 G x 5/8 in. Needle	600 Syringes/case
305661	3 mL BD Luer-Lok™ Syringe with 22 G x 1 in. Needle	600 Syringes/case
305662	3 mL BD Luer-Lok™ Syringe with 22 G x 3/4 in. Needle	600 Syringes/case
305663	3 mL Slip Tip Syringe with 22 G x 3/4 in. Needle	600 Syringes/case
305664	1 mL Slip Tip Syringe with 25 G x 5/8 in. Needle	600 Syringes/case

## BD Syringes with Needles

Reference No.	Product Description	Packaging
<b>1/2 mL Syringe with Permanently Attached Needle</b>		
305620	1/2 mL TB Syringe with 27 G x 1/2 in. Needle	100/box, 500/case
<b>1 mL Slip Tip Syringes with Detachable Needles</b>		
309623	1 mL TB Syringe with 27 G x 1/2 in. Needle	100/box, 800/case
309625	1 mL TB Syringe with 26 G x 3/8 in. Needle, Intradermal Bevel	100/box, 800/case
309597	1 mL TB Syringe with 26 G x 5/8 in. Needle, Sub-Q	100/box, 800/case
309626	1 mL TB Syringe with 25 G x 5/8 in. Needle	100/box, 800/case
309624	1 mL TB Syringe with 21 G x 1 in. Needle	100/box, 800/case
<b>3 mL Slip Tip Syringe with Detachable Needle</b>		
301628	3 mL Syringe with 22 G x 3/4 in. Needle	100/box, 800/case
<b>1 mL BD Luer-Lok™ Syringe with Detachable Needle</b>		
309637	1 mL Syringe with 20 G x 1 in. Needle	100/box, 800/case
<b>3 mL BD Luer-Lok™ Syringes with Detachable Needles</b>		
309582	3 mL Syringe with 25 G x 1 1/2 in. Needle	100/box, 800/case
309581	3 mL Syringe with 25 G x 1 in. Needle	100/box, 800/case
309570	3 mL Syringe with 25 G x 5/8 in. Needle	100/box, 800/case
309571	3 mL Syringe with 23 G x 1 in. Needle	100/box, 800/case
309574	3 mL Syringe with 22 G x 1 1/2 in. Needle	100/box, 800/case
309572	3 mL Syringe with 22 G x 1 in. Needle	100/box, 800/case
309569	3 mL Syringe with 22 G x 3/4 in. Needle	100/box, 800/case
309577	3 mL Syringe with 21 G x 1 1/2 in. Needle	100/box, 800/case
309575	3 mL Syringe with 21 G x 1 in. Needle	100/box, 800/case
309579	3 mL Syringe with 20 G x 1 1/2 in. Needle	100/box, 800/case
309578	3 mL Syringe with 20 G x 1 in. Needle	100/box, 800/case
309580	3 mL Syringe with 18 G x 1 1/2 in. Needle	100/box, 800/case
305060	3 mL Syringe with 18 G x 1 1/2 in. Blunt Fill Needle	100/box, 800/case
<b>5 mL BD Luer-Lok™ Syringes with Detachable Needles</b>		
309631	5 mL Syringe with 22 G x 1 1/2 in. Needle	100/box, 400/case
309630	5 mL Syringe with 22 G x 1 in. Needle	100/box, 400/case
309633	5 mL Syringe with 21 G x 1 1/2 in. Needle	100/box, 400/case
309632	5 mL Syringe with 21 G x 1 in. Needle	100/box, 400/case
309635	5 mL Syringe with 20 G x 1 1/2 in. Needle	100/box, 400/case
309634	5 mL Syringe with 20 G x 1 in. Needle	100/box, 400/case
305062	5 mL Syringe with 18 G x 1 1/2 in. Blunt Fill Needle	100/box, 400/case
<b>10 mL BD Luer-Lok™ Syringes with Detachable Needles</b>		
309640	10 mL Syringe with 22 G x 1 in. Needle	100/box, 400/case
309643	10 mL Syringe with 21 G x 1 1/2 in. Needle	100/box, 400/case
309642	10 mL Syringe with 21 G x 1 in. Needle	100/box, 400/case
309645	10 mL Syringe with 20 G x 1 1/2 in. Needle	100/box, 400/case
309644	10 mL Syringe with 20 G x 1 in. Needle	100/box, 400/case
305064	10 mL Syringe with 18 G x 1 1/2 in. Blunt Fill Needle	100/box, 400/case

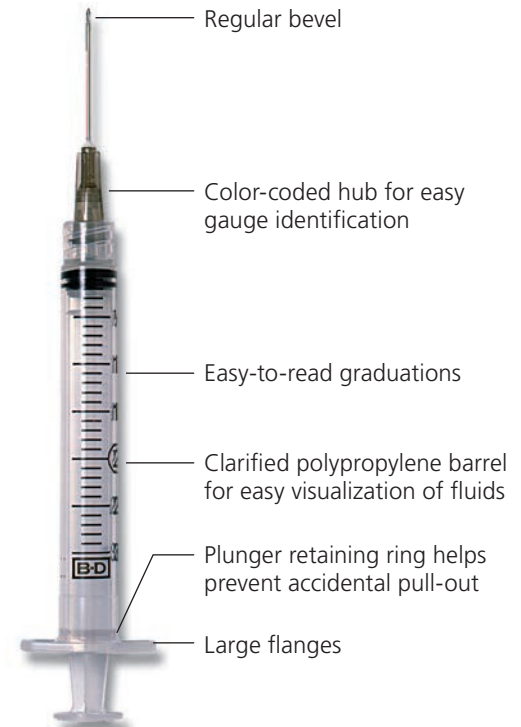


Color-coded packaging allows for easy gauge identification



Color-coded hubs for easy gauge identification

Regular bevel



Regular bevel

Color-coded hub for easy gauge identification

Easy-to-read graduations

Clarified polypropylene barrel for easy visualization of fluids

Plunger retaining ring helps prevent accidental pull-out

Large flanges

# BD Hypodermic Products

## BD Syringes



Reference No.	Product Description	Packaging
<b>1 mL Syringes Only</b>		
309659	1 mL TB Syringe, Slip Tip	200/box, 1600/case
309628	1 mL Syringe, BD Luer-Lok™ Tip	100/box, 800/case
<b>3 mL Syringes Only</b>		
309656	3 mL Syringe, Slip Tip	200/box, 800/case
309657	3 mL Syringe, BD Luer-Lok™ Tip	200/box, 800/case
<b>5 mL Syringes Only</b>		
309647	5 mL Syringe, Slip Tip	125/box, 500/case
309646	5 mL Syringe, BD Luer-Lok™ Tip	125/box, 500/case
<b>10 mL Syringes Only</b>		
301604	10 mL Syringe, Slip Tip	100/box, 400/case
309604	10 mL Syringe, BD Luer-Lok™ Tip	100/box, 400/case
305482	10 mL Syringe, Eccentric Tip	100/box, 400/case
<b>20 mL Syringes Only</b>		
302831	20 mL Syringe, Slip Tip	48/box, 192/case
302830	20 mL Syringe, BD Luer-Lok™ Tip	48/box, 192/case
300613	20 mL Syringe, Eccentric Tip	120/box, 480/case
<b>30 mL Syringes Only</b>		
302833	30 mL Syringe, Slip Tip	56/box, 224/case
302832	30 mL Syringe, BD Luer-Lok™ Tip	56/box, 224/case
<b>60 mL Syringes Only</b>		
309654	60 mL Syringe, Slip Tip	40/box, 160/case
309653	60 mL Syringe, BD Luer-Lok™ Tip	40/box, 160/case
300866	60 mL Syringe, Eccentric Tip	60/box, 240/case
<b>2 oz Syringe Only</b>		
309620	2 oz Syringe, Catheter Tip with Shield	40/box, 160/case

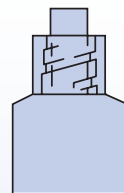
### Types of Syringe Tips:

Different tip designs available for a variety of applications



Slip Tip  
Sizes:

1 mL 20 mL  
3 mL 30 mL  
5 mL 60 mL  
10 mL



BD Luer-Lok™ Tip  
Sizes:

1 mL 20 mL  
3 mL 30 mL  
5 mL 60 mL  
10 mL



Eccentric Tip  
Sizes:

10 mL  
20 mL  
60 mL



Catheter Tip  
Sizes:

2 oz. only

# BD Hypodermic Products

## BD Oral Syringes

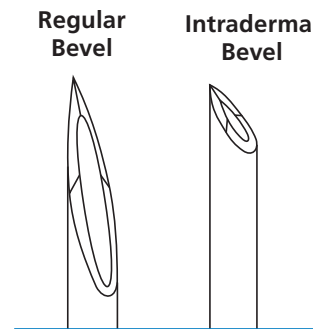
Reference No.	Product Description	Packaging
<b>Clear Oral Syringes with Tip Cap</b>		
305217	1 mL Oral Syringe	100/box, 500/case
305220	3 mL Oral Syringe	100/box, 500/case
305218	5 mL Oral Syringe	100/box, 500/case
305219	10 mL Oral Syringe	100/box, 500/case
<b>Amber Oral Syringes with Tip Cap</b>		
305207	1 mL Oral Syringe	100/box, 500/case
305210	3 mL Oral Syringe	100/box, 500/case
305208	5 mL Oral Syringe	100/box, 500/case
305209	10 mL Oral Syringe	100/box, 500/case



## BD Needles

Reference No.	Product Description	Packaging
<b>BD PrecisionGlide™ Needles*</b>		
305106	30 G x ½ in. Needle	100/box, 1000/case
305128	30 G x 1 in. Needle	100/box, 1000/case
305109	27 G x ½ in. Needle	100/box, 1000/case
305136	27 G x 1 ¼ in. Needle	100/box, 1000/case
305110	26 G x ¾ in. Needle, Intradermal Bevel	100/box, 1000/case
305111	26 G x ½ in. Needle	100/box, 1000/case
305122	25 G x 5/8 in. Needle	100/box, 1000/case
305124	25 G x 7/8 in. Needle	100/box, 1000/case
305125	25 G x 1 in. Needle	100/box, 1000/case
305127	25 G x 1 ½ in. Needle	100/box, 1000/case
305143	23 G x ¾ in. Needle	100/box, 1000/case
305145	23 G x 1 in. Needle	100/box, 1000/case
305120	23 G x 1 ¼ in. Needle	100/box, 1000/case
305155	22 G x 1 in. Needle	100/box, 1000/case
305142	22 G x ¾ in. Needle	100/box, 1000/case
305156	22 G x 1 ½ in. Needle	100/box, 1000/case
305165	21 G x 1 in. Needle	100/box, 1000/case
305167	21 G x 1 ½ in. Needle	100/box, 1000/case
305129	21 G x 2 in. Needle	100/box, 1000/case
305175	20 G x 1 in. Needle	100/box, 1000/case
305176	20 G x 1 ½ in. Needle	100/box, 1000/case
305186	19 G x 1 in. Needle, Thin Wall	100/box, 1000/case
305187	19 G x 1 ½ in. Needle, Thin Wall	100/box, 1000/case
305195	18 G x 1 in. Needle	100/box, 1000/case
305196	18 G x 1 ½ in. Needle	100/box, 1000/case
305197	16 G x 1 in. Needle	100/box, 1000/case
305198	16 G x 1 ½ in. Needle	100/box, 1000/case
<b>BD Blunt Fill Needles</b>		
305180	18 G x 1 ½ in., Blunt Fill Needle	100/box, 1000/case
305211	18 G x 1 ½ in., Blunt Filter Needle (5 Micron)	100/box, 1000/case

A broad line of needle gauges and lengths are available for a variety of applications.



30G

27G

26G

25G

24G

23G

22G

21G

20G

19G

18G

16G

BD Conventional Needle & Syringe Color Chart

\*all needles are regular bevel unless otherwise noted

# BD Hypodermic Products

## BD Safety-Lok™ Syringes



Reference No.	Product Description	Packaging
<b>BD Safety-Lok™ Syringes</b>		
<b>309606</b>	3 mL Syringe Only	100/box, 800/case
<b>309592</b>	3 mL Syringe with 25 G x 5/8 in. Needle	100/box, 800/case
<b>309594</b>	3 mL Syringe with 23 G x 1 in. Needle	100/box, 800/case
<b>309593</b>	3 mL Syringe with 22 G x 1 1/2 in. Needle	100/box, 800/case
<b>309596</b>	3 mL Syringe with 22 G x 1 in. Needle	100/box, 800/case
<b>309595</b>	3 mL Syringe with 21 G x 1 1/2 in. Needle	100/box, 800/case
<b>305558</b>	5 mL Syringe Only	50/box, 400/case
<b>305561</b>	5 mL Syringe with 21 G x 1 1/2 in. Needle	50/box, 400/case
<b>305559</b>	10 mL Syringe Only	50/box, 400/case
<b>305564</b>	10 mL Syringe with 21 G x 1 1/2 in. Needle	50/box, 400/case

## BD SafetyGlide™ Needles



Reference No.	Product Description	Packaging
<b>BD SafetyGlide™ Needles</b>		
<b>305921</b>	27 G x 5/8 in. Needle	50/box, 500/case
<b>305901</b>	25 G x 5/8 in. Needle	50/box, 500/case
<b>305916</b>	25 G x 1 in. Needle	50/box, 500/case
<b>305902</b>	23 G x 1 in. Needle	50/box, 500/case
<b>305900</b>	22 G x 1 1/2 in. Needle	50/box, 500/case
<b>305915</b>	21 G x 1 in. Needle	50/box, 500/case
<b>305917</b>	21 G x 1 1/2 in. Needle	50/box, 500/case
<b>305918</b>	18 G x 1 1/2 in. Needle	50/box, 500/case
<b>BD SafetyGlide™ Needles with BD Luer-Lok™ Syringes</b>		
<b>305927</b>	1 mL Syringe with 27 G x 5/8 in. Needle	50/box, 400/case
<b>305903</b>	1 mL Syringe with 25 G x 5/8 in. Needle	50/box, 400/case
<b>305904</b>	3 mL Syringe with 25 G x 5/8 in. Needle	50/box, 400/case
<b>305924</b>	3 mL Syringe with 25 G x 1 in. Needle	50/box, 400/case
<b>305905</b>	3 mL Syringe with 23 G x 1 in. Needle	50/box, 400/case
<b>305906</b>	3 mL Syringe with 22 G x 1 1/2 in. Needle	50/box, 400/case
<b>305909</b>	3 mL Syringe with 21 G x 1 1/2 in. Needle	50/box, 400/case
<b>305907</b>	5 mL Syringe with 22 G x 1 1/2 in. Needle	50/box, 400/case
<b>305908</b>	10 mL Syringe with 22 G x 1 1/2 in. Needle	50/box, 400/case

# BD Hypodermic Products

## BD Eclipse™ Needles



Reference No.	Product Description	Packaging
<b>BD Eclipse™ Needles</b>		
<b>305757</b>	30 G x ½ in. Needle	100/box, 1200/case
<b>305758</b>	27 G x ½ in. Needle	100/box, 1200/case
<b>305759</b>	25 G x ⅝ in. Needle	100/box, 1200/case
<b>305761</b>	25 G x 1 in. Needle	100/box, 1200/case
<b>305767</b>	25 G x 1 ½ in. Needle	100/box, 1200/case
<b>305762</b>	23 G x 1 in. Needle	100/box, 1200/case
<b>305768</b>	22 G x 1 in. Needle	100/box, 1200/case
<b>305763</b>	22 G x 1 ½ in. Needle	100/box, 1200/case
<b>305764</b>	21 G x 1 in. Needle	100/box, 1200/case
<b>305765</b>	21 G x 1 ½ in. Needle	100/box, 1200/case
<b>305766</b>	18 G x 1 ½ in. Needle	100/box, 1200/case
<b>BD Eclipse™ Needles with BD Luer-Lok™ Syringes</b>		
<b>305778</b>	1 mL Syringe with 30 G x ½ in. Needle	50/box, 300/case
<b>305789</b>	1 mL Syringe with 27 G x ½ in. Needle	50/box, 300/case
<b>305780</b>	1 mL Syringe with 25 G x ⅝ in. Needle	50/box, 300/case
<b>305781</b>	3 mL Syringe with 25 G x ⅝ in. Needle	50/box, 300/case
<b>305787</b>	3 mL Syringe with 25 G x 1 in. Needle	50/box, 300/case
<b>305782</b>	3 mL Syringe with 23 G x 1 in. Needle	50/box, 300/case
<b>305788</b>	3 mL Syringe with 22 G x 1 in. Needle	50/box, 300/case
<b>305783</b>	3 mL Syringe with 22 G x 1 ½ in. Needle	50/box, 300/case
<b>305779</b>	3 mL Syringe with 21 G x 1 in. Needle	50/box, 300/case
<b>305784</b>	3 mL Syringe with 21 G x 1 ½ in. Needle	50/box, 300/case
<b>305785</b>	5 mL Syringe with 22 G x 1 ½ in. Needle	50/box, 300/case
<b>305786</b>	10 mL Syringe with 22 G x 1 ½ in. Needle	50/box, 300/case

## BD Integra™ Syringes

with Retracting  
BD PrecisionGlide™ Needle



Reference No.	Product Description	Packaging
<b>BD Integra™ 3 mL Syringes with Detachable Needles</b>		
<b>305269</b>	3 mL Syringe with 25 G x ⅝ in. Needle	100/box, 400/case
<b>305270</b>	3 mL Syringe with 25 G x 1 in. Needle	100/box, 400/case
<b>305271</b>	3 mL Syringe with 23 G x 1 in. Needle	100/box, 400/case
<b>305272</b>	3 mL Syringe with 22 G x 1 ½ in. Needle	100/box, 400/case
<b>305273</b>	3 mL Syringe with 21 G x 1 in. Needle	100/box, 400/case
<b>305274</b>	3 mL Syringe with 21 G x 1 ½ in. Needle	100/box, 400/case

# BD Insulin Products

Reference No.	Product Description	Packaging
<b>1 mL Insulin Syringes</b>		
<b>329412</b>	1 mL 27 G x 5/8 in. U-100 BD Micro-Fine™ IV	100/box, 500/case
<b>329410</b>	1 mL 28 G x 1/2 in. U-100 BD Micro-Fine™ IV	100/box, 500/case
<b>329424</b>	1 mL 28 G x 1/2 in. U-100 BD Micro-Fine™ IV (Orange)	100/box, 500/case
<b>328418</b>	1 mL 31 G x 5/16 in. U-100 BD Ultra-Fine™ Short	100/box, 500/case
<b>BD Lo-Dose™ Insulin Syringes with Permanently Attached Needles</b>		
<b>328438</b>	3/10 mL, 31 G x 5/16 in. U-100 BD Ultra-Fine™ Short	100/box, 500/case
<b>309301</b>	3/10 mL, 29 G x 1/2 in. U-100 BD Ultra-Fine™	200/box, 1600/case
<b>328430</b>	3/10 mL, 28 G x 1/2 in. U-100 BD Micro-Fine™ IV	100/box, 500/case
<b>328468</b>	1/2 mL, 30 G x 5/16 in. U-100 BD Ultra-Fine™ Short	100/box, 500/case
<b>329465</b>	1/2 mL, 28 G x 1/2 in. U-100 BD Micro-Fine™ IV	100/box, 500/case
<b>28 G Insulin Syringes in Blister Pack</b>		
<b>329461</b>	1/2 mL BD Lo-Dose™ Insulin Syringe 28 G x 1/2 in. U-100 BD Micro-Fine™ IV (Orange)	100/box, 500/case
<b>329420</b>	1 mL Insulin Syringe 28 G x 1/2 in. U-100 BD Micro-Fine™ IV (Single-Unit Scale)	100/box, 500/case

## BD Safety-Lok™ Syringes



Reference No.	Product Description	Packaging
<b>BD Safety-Lok™ Syringes</b>		
<b>329464</b>	1 mL Insulin Syringe with Permanently Attached 29 G x 1/2 in. U-100 BD Ultra-Fine™ Needle	100/box, 500/case
<b>305553</b>	1 mL Tuberculin Syringe with Permanently Attached 27 G x 1/2 in. Needle	100/box, 500/case
<b>305554</b>	1 mL Tuberculin Syringe with Permanently Attached 25 G x 5/8 in. Needle	100/box, 500/case

## BD SafetyGlide™ Syringes



Reference No.	Product Description	Packaging
<b>BD SafetyGlide™ Syringes for Insulin, TB and Allergy</b>		
<b>305930</b>	1 mL Insulin Syringe with 29 G x 1/2 in. Needle	100/box, 400/case
<b>305932</b>	1/2 mL Insulin Syringe with 29 G x 1/2 in. Needle	100/box, 400/case
<b>305935</b>	3/10 mL Insulin Syringe with 29 G x 1/2 in. Needle	100/box, 400/case
<b>305934</b>	1/2 mL Insulin Syringe with 30 G x 5/16 in. Needle, Thin Wall	100/box, 400/case
<b>305937</b>	3/10 mL Insulin Syringe with 31 G x 5/16 in. Needle, Thin Wall	100/box, 400/case
<b>305945</b>	1 mL Tuberculin Syringe with 27 G x 1/2 in. Needle	100/box, 400/case
<b>305946</b>	1 mL Tuberculin Syringe with 26 G x 3/8 in. Needle (IB)	100/box, 400/case
<b>305950</b>	1 mL Allergist Tray with 27 G x 1/2 in. Needle (RB)	25/tray, 1000/case
<b>305951</b>	1 mL Allergist Tray with 26 G x 3/8 in. Needle (IB)	25/tray, 1000/case

(IB) Intradermal Bevel  
(RB) Regular Bevel

# BD Infusion Therapy Products



## BD Insyte™ Autoguard™ BC Shielded IV Catheter with Blood Control Technology

BD Insyte™ Autoguard™ BC Shielded IV Catheter is clinically shown to reduce the risk of blood exposure by 95%.<sup>1\*</sup> In a clinical study, 98% of clinicians stated they had no risk of blood exposure during insertion when using BD Insyte™ Autoguard™ BC,<sup>1</sup> which means:

- Less risk of exposure to bloodborne pathogens
- Virtually no clean up of blood spills
- No need to worry about stopping blood<sup>1</sup>
- Lower costs related to clean-up supplies

Incorporates all the standard benefits of BD Insyte™ Autoguard™ catheters with BD Instaflash™ needle technology in 20, 22 and 24 gauge sizes along with push-button shielding technology and BD Vialon™ biomaterial.

Reference No.	Description	Packaging
<b>Non-Winged</b>		
<b>382512</b>	24 G x 0.75 in. (0.7 mm x 19 mm) Yellow	50/box 200/case
<b>382523</b>	22 G x 1.00 in. (0.9 mm x 25 mm) Blue	50/box 200/case
<b>382533</b>	20 G x 1.00 in. (1.1 mm x 25 mm) Pink	50/box 200/case
<b>382534</b>	20 G x 1.16 in. (1.1 mm x 30 mm) Pink	50/box 200/case
<b>382537</b>	20 G x 1.88 in. (1.1 mm x 48 mm) Pink	50/box 200/case
<b>382544</b>	18 G x 1.16 in. (1.3 mm x 30 mm) Green	50/box 200/case
<b>382547</b>	18 G x 1.88 in. (1.3 mm x 48 mm) Green	50/box 200/case
<b>382554</b>	16 G x 1.16 in. (1.7 mm x 30 mm) Gray	50/box 200/case
<b>382557</b>	16 G x 1.77 in. (1.7 mm x 45 mm) Gray	50/box 200/case
<b>With Wings</b>		
<b>382612</b>	24 G x 0.75 in. (0.7 mm x 19 mm) Yellow	50/box 200/case
<b>382623</b>	22 G x 1.00 in. (0.9 mm x 25 mm) Blue	50/box 200/case
<b>382633</b>	20 G x 1.00 in. (1.1 mm x 25 mm) Pink	50/box 200/case
<b>382634</b>	20 G x 1.16 in. (1.1 mm x 30 mm) Pink	50/box 200/case
<b>382637</b>	20 G x 1.88 in. (1.1 mm x 48 mm) Pink	50/box 200/case
<b>382644</b>	18 G x 1.16 in. (1.3 mm x 30 mm) Green	50/box 200/case
<b>382647</b>	18 G x 1.88 in. (1.3 mm x 48 mm) Green	50/box 200/case
<b>382654</b>	16 G x 1.16 in. (1.7 mm x 30 mm) Gray	50/box 200/case
<b>382657</b>	16 G x 1.77 in. (1.7 mm x 45 mm) Gray	50/box 200/case



## BD Insyte™ Autoguard™ Shielded IV Catheter

BD Insyte™ Autoguard™ Shielded IV Catheters mean added safety for you with push-button shielding technology that has been shown to reduce needlestick injuries by 95%.<sup>2\*\*</sup> The unique BD Instaflash™ needle technology in the 20, 22 and 24 gauge sizes is designed to reduce hit-and-miss insertion by confirming vessel entry. Made of clinically proven BD Vialon™ biomaterial designed to soften in the vein and provide greater kink resistance<sup>3</sup> and longer dwell time<sup>4</sup> compared to FEP polymer.

Reference No.	Description	Packaging
<b>Non-Winged</b>		
<b>381412</b>	24 G x 0.75 in. (0.7 mm x 19 mm) Yellow	50/box, 200/case
<b>381423</b>	22 G x 1.00 in. (0.9 mm x 25 mm) Blue	50/box, 200/case
<b>381433</b>	20 G x 1.00 in. (1.1 mm x 25 mm) Pink	50/box, 200/case
<b>381434</b>	20 G x 1.16 in. (1.1 mm x 30 mm) Pink	50/box, 200/case
<b>381437</b>	20 G x 1.88 in. (1.1 mm x 48 mm) Pink	50/box, 200/case
<b>381444</b>	18 G x 1.16 in. (1.3 mm x 30 mm) Green	50/box, 200/case
<b>381447</b>	18 G x 1.88 in. (1.3 mm x 48 mm) Green	50/box, 200/case
<b>381454</b>	16 G x 1.16 in. (1.7 mm x 30 mm) Gray	50/box, 200/case
<b>381457</b>	16 G x 1.77 in. (1.7 mm x 45 mm) Gray	50/box, 200/case
<b>381467</b>	14 G x 1.75 in. (2.1 mm x 45 mm) Orange	50/box, 200/case
<b>With Wings</b>		
<b>381512</b>	24 G x 0.75 in. (0.7 mm x 19 mm) Yellow	50/box, 200/case
<b>381523</b>	22 G x 1.00 in. (0.9 mm x 25 mm) Blue	50/box, 200/case
<b>381533</b>	20 G x 1.00 in. (1.1 mm x 25 mm) Pink	50/box, 200/case
<b>381534</b>	20 G x 1.16 in. (1.1 mm x 30 mm) Pink	50/box, 200/case
<b>381537</b>	20 G x 1.88 in. (1.1 mm x 48 mm) Pink	50/box, 200/case
<b>381544</b>	18 G x 1.16 in. (1.3 mm x 30 mm) Green	50/box, 200/case
<b>381547</b>	18 G x 1.88 in. (1.3 mm x 48 mm) Green	50/box, 200/case
<b>381554</b>	16 G x 1.16 in. (1.7 mm x 30 mm) Gray	50/box, 200/case
<b>381557</b>	16 G x 1.77 in. (1.7 mm x 45 mm) Gray	50/box, 200/case

\*Compared to non-blood control peripheral IV catheters.

\*\*Compared to non-safety peripheral IV catheters.

<sup>1</sup>Onia R, Eshun-Wilson I, Arce C, et al. Evaluation of a new safety peripheral IV catheter designed to reduce mucocutaneous blood exposure. *Curr Med Res Opin.* 2011;27(7):1339-1346.

<sup>2</sup>Mendelson MH, Lin-Chen BY, Finkelstein-Blond L, Bailey E, Kogan G. Evaluation of a safety IV catheter (IVC) (Becton Dickinson, Insyte Autoguard): final report [abstract]. Eleventh Annual Scientific Meeting Society for Healthcare Epidemiology of America. 2001.

<sup>3</sup>Gaukroger PB, Roberts JG, Manners TA. Infusion thrombophlebitis: a prospective comparison of 645 Vialon and Teflon cannulae in anaesthetic and postoperative use. *Anaesthesia and Intensive Care.* 1988;16:265-271.

<sup>4</sup>Maki DG, Ringer M. Risk factors for infusion-related phlebitis with small peripheral venous catheters. *Annals of Internal Medicine.* 1991;114:845-854.



# BD Infusion Therapy Products



## BD Nexiva™ Closed IV Catheter System

BD Nexiva™ Closed IV Catheter System is a unique all-in-one catheter, extension set and built-in stabilization platform designed to:

- Reduce risk of needlestick injury and minimize blood exposure
- Minimize the potential for contamination as extension is pre-attached
- Minimize catheter movement

On the dual port, a second port allows for simultaneous administration of compatible fluids and medications near the insertion site.

Reference No.	Description	Packaging
<b>Dual Port</b>		
<b>383530</b>	24 G x 0.56 in. Dual Port (0.7 mm x 14 mm) Yellow	20/box 80/case
<b>383531</b>	24 G x 0.75 in. Dual Port (0.7 mm x 19 mm) Yellow	20/box 80/case
<b>383532</b>	22 G x 1.00 in. Dual Port (0.9 mm x 25 mm) Blue	20/box 80/case
<b>383536</b>	20 G x 1.00 in. Dual Port (1.1 mm x 25 mm) Pink	20/box 80/case
<b>383537</b>	20 G x 1.25 in. Dual Port (1.1 mm x 31 mm) Pink	20/box 80/case
<b>383538</b>	20 G x 1.75 in. Dual Port (1.1 mm x 45 mm) Pink	20/box 80/case
<b>383539</b>	18 G x 1.25 in. Dual Port (1.3 mm x 31 mm) Green	20/box 80/case
<b>383540</b>	18 G x 1.75 in. Dual Port (1.3 mm x 45 mm) Green	20/box 80/case
<b>Single Port</b>		
<b>383510</b>	24 G x 0.56 in. Single Port (0.7 mm x 14 mm) Yellow	20/box 80/case
<b>383511</b>	24 G x 0.75 in. Single Port (0.7 mm x 19 mm) Yellow	20/box 80/case
<b>383512</b>	22 G x 1.00 in. Single Port (0.9 mm x 25 mm) Blue	20/box, 80/case
<b>383516</b>	20 G x 1.00 in. Single Port (1.1 mm x 25 mm) Pink	20/box, 80/case
<b>383517</b>	20 G x 1.25 in. Single Port (1.1 mm x 31 mm) Pink	20/box, 80/case
<b>383518</b>	20 G x 1.75 in. Single Port (1.1 mm x 45 mm) Pink	20/box 80/case
<b>383519</b>	18 G x 1.25 in. Single Port (1.3 mm x 31 mm) Green	20/box 80/case
<b>383520</b>	18 G x 1.75 in. Single Port (1.3 mm x 45 mm) Green	20/box 80/case



## BD Saf-T-Intima™ Closed IV Catheter System

BD Saf-T-Intima™ Closed IV Catheter System made of BD Vialon™ biomaterial is part of our suite of safety catheters that are designed to reduce risk of needlestick injury and minimize blood exposure during venipuncture.

For added versatility, the PRN adapter can be removed to allow for the use of any needleless closed IV access device. The BD Saf-T-Intima™ Closed IV Catheter System with “Y” adapter allows for prepriming and flushing during venipuncture.

Reference No.	Description	Packaging
<b>With Removable PRN Adapter</b>		
<b>383312</b>	24 G x 0.75 in. (0.7 mm x 19 mm) Yellow	25/box, 200/case
<b>383322</b>	22 G x 0.75 in. (0.9 mm x 19 mm) Blue	25/box, 200/case
<b>383335</b>	20 G x 1.00 in. (1.1 mm x 25 mm) Pink	25/box, 200/case
<b>With Y Adapter</b>		
<b>383313</b>	24 G x 0.75 in. (0.7 mm x 19 mm) Yellow	25/box, 200/case
<b>383323</b>	22 G x 0.75 in. (0.9 mm x 19 mm) Blue	25/box, 200/case
<b>383336</b>	20 G x 1.00 in. (1.1 mm x 25 mm) Pink	25/box, 200/case
<b>383346</b>	18 G x 1.00 in. (1.3 mm x 25 mm) Green	25/box, 200/case

# BD Infusion Therapy Products

## BD Insyte™ IV Catheter with BD Vialon™ Biomaterial



## BD Insyte-W™ IV Catheter with BD Vialon™ Biomaterial and Wings



## BD Angiocath™ IV Catheter with FEP Polymer

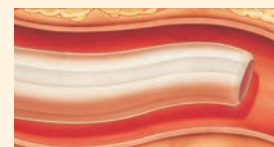


Reference No.	Product Description	Packaging
<b>BD Insyte™ IV Catheters with BD Vialon™ Biomaterial</b>		
<b>381212</b>	24 G x 0.75 in. (Yellow)	50/box, 200/case
<b>381223</b>	22 G x 1.00 in. (Blue)	50/box, 200/case
<b>381233</b>	20 G x 1.00 in. (Pink)	50/box, 200/case
<b>381234</b>	20 G x 1.16 in. (Pink)	50/box, 200/case
<b>381237</b>	20 G x 1.88 in. (Pink)	50/box, 200/case
<b>381244</b>	18 G x 1.16 in. (Green)	50/box, 200/case
<b>381247</b>	18 G x 1.88 in. (Green)	50/box, 200/case
<b>381254</b>	16 G x 1.16 in. (Gray)	50/box, 200/case
<b>381257</b>	16 G x 1.77 in. (Gray)	50/box, 200/case
<b>381267</b>	14 G x 1.75 in. (Orange)	50/box, 200/case
<b>BD Insyte-W™ IV Catheters with BD Vialon™ Biomaterial and Wings</b>		
<b>381312</b>	24 G x 0.75 in. (Yellow)	50/box, 200/case
<b>381323</b>	22 G x 1.00 in. (Blue)	50/box, 200/case
<b>381333</b>	20 G x 1.00 in. (Pink)	50/box, 200/case
<b>381334</b>	20 G x 1.16 in. (Pink)	50/box, 200/case
<b>381337</b>	20 G x 1.88 in. (Pink)	50/box, 200/case
<b>381344</b>	18 G x 1.16 in. (Green)	50/box, 200/case
<b>381347</b>	18 G x 1.88 in. (Green)	50/box, 200/case
<b>381354</b>	16 G x 1.16 in. (Gray)	50/box, 200/case
<b>381357</b>	16 G x 1.77 in. (Gray)	50/box, 200/case
<b>BD Insyte-N™ IV Catheters with BD Vialon™ Biomaterial</b>		
<b>381211</b>	24 G x 0.56 in. (Yellow)	50/box, 200/case
<b>381311</b>	24 G x 0.56 in. (Yellow) with Wings	50/box, 200/case

All BD catheters incorporate the sharp BD needle technology and a tapered catheter tip to facilitate penetration and insertion. Gauge sizes are color-coded for easy identification.

### Catheters made with clinically proven BD Vialon™ Biomaterial

- Designed to soften in the vein
- Greater kink resistance<sup>1</sup> and longer dwell time<sup>2</sup> compared to FEP polymer
- Portfolio of products to meet your needs



BD Insyte-N™ and BD Angiocath-N™ IV catheters are designed with BD Instaflash™ needle technology to provide immediate visual confirmation of vessel entry and designed to enhance first-stick success.

Reference No.	Product Description	Packaging
<b>BD Angiocath™ IV Catheters</b>		
<b>381112</b>	24 G x 0.75 in. (Yellow)	50/box, 200/case
<b>381123</b>	22 G x 1.00 in. (Blue)	50/box, 200/case
<b>381137</b>	20 G x 1.88 in. (Pink)	50/box, 200/case
<b>381147</b>	18 G x 1.88 in. (Green)	50/box, 200/case
<b>381157</b>	16 G x 1.88 in. (Gray)	50/box, 200/case
<b>381167</b>	14 G x 1.88 in. (Orange)	50/box, 200/case
<b>BD Angiocath™ Catheters for Special Placement</b>		
<b>382258</b>	16 G x 3.25 in. (Gray)	10/box, 50/case
<b>382259</b>	16 G x 5.25 in. (Gray)	10/box, 50/case
<b>382268</b>	14 G x 3.25 in. (Orange)	10/box, 50/case
<b>382269</b>	14 G x 5.25 in. (Orange)	10/box, 50/case
<b>382277</b>	12 G x 3.00 in. (Light Blue)	10/box, 50/case
<b>382287</b>	10 G x 3.00 in. (Tan)	10/box, 50/case

<sup>1</sup>Gaukroger PB, Roberts JG, Manners TA. Infusion thrombophlebitis: A prospective comparison of 645 Vialon® and Teflon® cannulae in anaesthetic and postoperative use. *Anesthesia and Intensive Care*. 1988;16:265-271.

<sup>2</sup>Maki D, Ringer M. Risk factors for infusion-related phlebitis with small peripheral venous catheters. *Annals of Internal Medicine*. 1991;114:845-854.

# BD PosiFlush™ Prefilled Syringes

BD PosiFlush™ Prefilled Flush Syringes are syringes specifically designed for flushing and are available in a wide variety of sizes and solutions to meet all your flush protocol requirements.



Reference No.	Product Description	NHRIC No.	Packaging
<b>BD PosiFlush™ Heparin Lock Syringes</b>			
<b>306413</b>	3 mL – 30 units/3mL (10 units/mL)	8290-306413	30/box, 480/case
<b>306414</b>	5 mL – 50 units/5mL (10 units/mL)	8290-306414	30/box, 480/case
<b>306423</b>	3 mL – 300 units/3mL (100 units/mL)	8290-306423	30/box, 480/case
<b>306424</b>	5 mL – 500 units/5mL (100 units/mL)	8290-306424	30/box, 480/case

Reference No.	Product Description	NHRIC No.	Packaging
<b>BD PosiFlush™ Saline Syringes, 0.9% Sodium Chloride</b>			
<b>306544</b>	3 mL	8290-306544	30/box, 480/case
<b>306545</b>	5 mL	8290-306545	30/box, 480/case
<b>306546</b>	10 mL	8290-306546	30/box, 480/case
<b>306549</b>	3 mL with Blunt Plastic Cannula	8290-306549	30/box, 480/case
<b>306550</b>	5 mL with Blunt Plastic Cannula	8290-306550	30/box, 480/case
<b>306551</b>	10 mL with Blunt Plastic Cannula	8290-306551	30/box, 480/case
<b>BD PosiFlush™ Sterile Field Saline Syringe</b>			
<b>306553</b>	10 mL	8290-306553	30/box, 240/case

# BD Vacutainer® Blood Collection Products

## BD Vacutainer® Push Button Blood Collection Sets

The BD Vacutainer® Push Button Blood Collection Set offers split-second protection for that single moment that could potentially change your life. The push-button safety mechanism instantly helps protect you against needlestick injury. It is also offered with a pre-attached holder for added convenience and OSHA single-use holder compliance.



Reference No.	Product Description	Color	Packaging
<b>BD Vacutainer® Push Button Blood Collection Sets</b>			
<b>367338</b>	With Luer, 21 G, 7 in. Tubing	Green	50/box, 200/case
<b>367344</b>	With Luer, 21 G, 12 in. Tubing	Green	50/box, 200/case
<b>367326</b>	Without Luer, 21 G, 12 in. Tubing	Green	50/box, 200/case
<b>367336</b>	With Luer, 23 G, 7 in. Tubing	Light Blue	50/box, 200/case
<b>367342</b>	With Luer, 23 G, 12 in. Tubing	Light Blue	50/box, 200/case
<b>367324</b>	Without Luer, 23 G, 12 in. Tubing	Light Blue	50/box, 200/case
<b>367335</b>	With Luer, 25 G, 7 in. Tubing	Dark Blue	50/box, 200/case
<b>367341</b>	With Luer, 25 G, 12 in. Tubing	Dark Blue	50/box, 200/case
<b>367323</b>	Without Luer, 25 G, 12 in. Tubing	Dark Blue	50/box, 200/case

Reference No.	Product Description	Color	Packaging
<b>BD Vacutainer® Push Button Blood Collection Sets with Pre-Attached Holder</b>			
<b>367352</b>	With Pre-Attached Holder, 21 G x 3/4 in., 12 in. Tubing	Green	20/box, 100/case
<b>368656</b>	With Pre-Attached Holder, 23 G x 3/4 in., 12 in. Tubing	Light Blue	20/box, 100/case
<b>368659</b>	With Pre-Attached Holder, 25 G x 3/4 in., 12 in. Tubing	Dark Blue	20/box, 100/case

Products cleared by U.S. FDA "For Human Use."

# BD Blood Collection Products

## BD Vacutainer® Needle Accessories



Reference No.	Product Description	Packaging
<b>BD Vacutainer® Holder Options</b>		
364815	BD Vacutainer® One Use Holder	250/bag, 1000/case
364597	BD Vacutainer® Ribbed Pediatric Tube Adapter	10/bag, 100/case
<b>BD Vacutainer® Adapter</b>		
367290	BD Vacutainer® Multiple-Sample Luer Adapter	100/box, 1000/case
364902	BD Vacutainer® Luer-Lok™ Access Device	200/case



## BD Vacutainer® Blood Transfer Device

Reference No.	Product Description	Packaging
<b>BD Vacutainer® Specimen Transfer and Access</b>		
364880	BD Vacutainer® Blood Transfer Device	200/case



## BD Microtainer® MAP Microtube for Automated Process

BD Microtainer® MAP Microtube for Automated Process is the first one-piece instrument-compatible microtube to offer both standard full-size patient identification labels as well as compatibility with most automated hematology instruments. The BD Microtainer® MAP tube is designed to improve the accuracy and processing time of capillary blood specimens up to 500 µL.

Reference No.	Product Description	Color	Additive	Packaging
<b>BD Microtainer® MAP Microtube Automated Process</b>				
363706	Plastic, 250-500 µL	Lavender	1.0 mg K <sub>2</sub> EDTA	50/box, 200/case

## BD Microtainer® Blood Collection Tubes



Designed for convenience and performance, BD Microtainer® capillary blood collection tubes are non-evacuated and have a texturized inner surface to improve flow and mixability. Printed fill lines avoid overfills. The wider diameter BD Microtainer® Tubes with BD Microgard™ Closure feature an integrated collection scoop and improved mixing ability.

## BD Microtainer® Tubes with BD Microgard™ Closure Tube Guide and Order of Draw

Catalog #/ Closure Color	Additive	Mix by Inverting	Laboratory Use
365974 Lavender	K <sub>2</sub> EDTA	10x	For whole blood hematology determinations. Tube inversions prevent clotting.
365965 Green	Lithium Heparin	10x	For plasma determinations in chemistry. Tube inversions prevent clotting.
365985 Mint Green	Lithium Heparin and Gel for plasma separation	10x	For plasma determinations in chemistry. Tube inversions prevent clotting.
365987 Mint Green			
365992 Grey	NaF/Na <sub>2</sub> EDTA	10x	For glucose determinations. Tube inversions ensure proper mixing of additive and blood.
365967 Gold	Clot Activator and Gel for serum separation	5x	For serum determinations in chemistry.
365978 Gold			
365963 Red	No additive	0x	For serum determinations in chemistry, serology and blood banking.

Products cleared by U.S. FDA "For Human Use."

# BD Blood Collection Products

A full line of BD Vacutainer® Venous Blood Collection Tubes are available in both glass and plastic.



Quality results begin with a quality specimen. BD Diagnostics – Preanalytical Systems is the worldwide leader of evacuated blood collection tubes. We back our products with extensive clinical expertise and educational materials to help you achieve the best possible results. BD Vacutainer® provides a full offering

of blood collection tubes in both glass and plastic. BD Vacutainer® Blood Collection Tubes are clinically proven and supported with numerous clinical studies on a vast array of analytes to document the efficacy, performance characteristics and ease of use of our tubes.

		BD Vacutainer® Tubes with Hemogard™ Closure			BD Vacutainer® Tubes with Conventional Stopper		
Color	Additive	Reference No.	Product Description	Packaging	Reference No.	Product Description	Packaging
	BD Vacutainer® SST™ Tubes Clot Activator & Gel	<b>367983*</b>	Plastic, 3.5 mL, 13 x 75 mm	100/box, 1000/case	<b>367981</b> <b>367988</b>	Plastic, 3.5 mL, 13 x 75 mm Plastic, 8.5 mL, 16 x 100 mm	100/box, 1000/case
		<b>367986</b>	Plastic, 5.0 mL, 13 x 100 mm				
	BD Vacutainer RST™ Tubes Thrombin-based Clot Activator & Gel	<b>368774</b>	Plastic, 5.0 mL, 13 x 100 mm	100/box, 1000/case			
	Lithium Heparin (L)	<b>366664*</b> <b>367884</b> <b>367871</b>	Plastic, 2.0 mL, 13 x 75 mm (L) Plastic, 4.0 mL, 13 x 75 mm (L) Plastic, 4.0 mL, 13 x 75 mm (S)	100/box, 1000/case	<b>366667*</b> <b>367880</b> <b>367874</b>	Plastic, 3.0 mL, 13 x 75 mm (L) Plastic, 10.0 mL, 16 x 100 mm (L) Plastic, 10.0 mL, 16 x 100 mm (S)	100/box, 1000/case
	Sodium Heparin (S)	<b>367671*</b>	Glass, 2.0 mL, 13 x 75 mm (S)	100/box, 1000/case			
	Silicone-Coated with Clot Activator	<b>367812</b> <b>367815</b>	Plastic, 4.0 mL, 13 x 75 mm Plastic, 6.0 mL, 13 x 100 mm	100/box, 1000/case	<b>366668*</b> <b>367820</b>	Plastic, 3.0 mL, 13 x 75 mm Plastic, 10.0 mL, 16 x 100 mm	100/box, 1000/case
	Silicone-Coated						
	Spray-coated K <sub>2</sub> EDTA (Plastic)	<b>367841*</b> <b>367856</b> <b>367861</b> <b>366643</b>	Plastic, 2.0 mL, 13 x 75 mm Plastic, 3.0 mL, 13 x 75 mm Plastic, 4.0 mL, 13 x 75 mm Plastic, 10.0 mL, 16 x 100 mm	100/box, 1000/case	<b>367844</b>	Plastic, 4.0 mL, 13 x 75 mm	100/box, 1000/case
	Liquid K <sub>3</sub> EDTA (Glass)				<b>364300*</b>	Glass, 2.0 mL, 10.25 x 64 mm	100/box, 1000/case
	BD Vacutainer® PST™ Tubes/ Lithium Heparin & Gel	<b>367960*</b> <b>367962</b>	Plastic, 3.0 mL, 13 x 75 mm Plastic, 4.5 mL, 13 x 100 mm	100/box, 1000/case	<b>368056</b> <b>367964</b>	Plastic, 3.0 mL, 13 x 75 mm Plastic, 8.0 mL, 16 x 100 mm	100/box, 1000/case
	Buffered Sodium Citrate 0.105M	<b>363080*</b> <b>363083</b>	Plastic, 1.8 mL, 13 x 75 mm Plastic, 2.7 mL, 13 x 75 mm	100/box, 1000/case			
		<b>369714</b>	Glass, 4.5 mL, 13 x 75 mm	100/box, 1000/case	<b>366392</b> <b>366393</b>	Glass, 1.8 mL, 10.25 x 47 mm Glass, 2.7 mL, 10.25 x 64 mm	100/box, 1000/case
	Fluoride Tubes with Glycolytic Inhibitor	<b>367921*</b> <b>367587*</b> <b>367922</b> <b>367925</b>	Plastic, 2.0 mL, 13 x 75 mm Plastic, 2.0 mL, 13 x 75 mm Plastic, 4.0 mL, 13 x 75 mm Plastic, 6.0 mL, 13 x 100 mm	100/box, 1000/case			
	No Additive	<b>366703*</b>	Plastic, 3.0 mL, 13 x 75 mm	100/box, 1000/case			
	No Additive	<b>366408</b>	Plastic, 6.0 mL, 13 x 100 mm	100/box, 1000/case			

\*Low-Volume Tubes

Products cleared by U.S. FDA "For Human Use."

# BD Blood Collection Products

## BD Safety-Engineered Blood Collection Devices



**BD Vacutainer® Eclipse™  
Blood Collection Needles**



**BD Vacutainer® Safety-Lok™  
Blood Collection Sets**

Reference No.	Product Description	Packaging
<b>BD Vacutainer® Eclipse™ Blood Collection Needles and Holder Options</b>		
<b>368607</b>	21 G x 1 ¼ in. Needle	48/box, 480/case
<b>368608</b>	22 G x 1 ¼ in. Needle	48/box, 480/case
<b>368650</b>	21 G x 1 ¼ in. Needle with Pre-Attached Holder	100/case
<b>368651</b>	22 G x 1 ¼ in. Needle with Pre-Attached Holder	100/case

Reference No.	Product Description	Packaging
<b>BD Vacutainer® Urine Bulk Products</b>		
<b>364966</b>	Urine Transfer Straw	100/box, 1000/case
<b>364951</b>	<b>Bulk Tube:</b> 4.0 mL, 13 x 75 mm Plastic C&S Preservative Tube	100/box, 1000/case
<b>364979</b>	<b>Bulk Tube:</b> 10.0 mL, 16 x 100 mm Plastic Round Bottom Tube for Urinalysis	100/box, 1000/case
<b>364980</b>	<b>Bulk Tube:</b> 8.0 mL, 16 x 100 mm Plastic Conical Tube for Urinalysis	100/box, 1000/case
<b>BD Vacutainer® Tubes with Hemogard™ Closure</b>		
<b>366703</b>	Plastic, 3.0 mL, 13 x 75 mm	100/box, 1000/case
<b>366408</b>	Plastic, 6.0 mL, 13 x 100 mm	100/box, 1000/case

Reference No.	Product Description	Packaging
<b>BD Vacutainer® Safety-Lok™ Blood Collection Sets for Blood Collection and Infusion</b>		
<b>367281</b>	with Luer, 21 G x ¾ in. 12 in. Tube	50/box, 200/case
<b>367283</b>	with Luer, 23 G x ¾ in. 12 in. Tube	50/box, 200/case
<b>367285</b>	with Luer, 25 G x ¾ in. 12 in. Tube	50/box, 200/case
<b>367287</b>	with Luer, 21 G x ¾ in. 7 in. Tube	50/box, 200/case
<b>367292</b>	with Luer, 23 G x ¾ in. 7 in. Tube	50/box, 200/case
<b>367294</b>	with Luer, 25 G x ¾ in. 7 in. Tube	50/box, 200/case
<b>367296</b>	without Luer, 21 G x ¾ in. 12 in. Tube	50/box, 200/case
<b>367297</b>	without Luer, 23 G x ¾ in. 12 in. Tube	50/box, 200/case
<b>367298</b>	without Luer, 25 G x ¾ in. 12 in. Tube	50/box, 200/case
<b>368652</b>	With Pre-Attached Holder, 21 G x ¾ in., 12 in. Tubing	25/box, 200/case
<b>368653</b>	With Pre-Attached Holder, 23 G x ¾ in., 12 in. Tubing	25/box, 200/case

Products cleared by U.S. FDA "For Human Use."

# BD Anesthesia Products

## BD Spinal Needles

Reference No.	Product Description	Packaging
<b>BD Quincke Spinal Needles, Sterile, Single Use</b>		
405081	27 G x 3 ½ in. (Gray)	25/box, 100/case
405164	26 G x 3 ½ in. (Tan)	25/box, 100/case
405170	25 G x 3 in. (Blue)	25/box, 100/case
405180	25 G x 3 ½ in. (Blue)	25/box, 100/case
400106	23 G x 3 ½ in. (Turquoise)	25/box, 100/case
405161	22 G x 1 ½ in. (Black)	25/box, 100/case
405074	22 G x 2 ½ in. (Black)	25/box, 100/case
405171	22 G x 3 in. (Black)	25/box, 100/case
405181	22 G x 3 ½ in. (Black)	25/box, 100/case
405162	20 G x 1 ½ in. (Yellow)	25/box, 100/case
405071	20 G x 2 ½ in. (Yellow)	25/box, 100/case
405172	20 G x 3 in. (Yellow)	25/box, 100/case
405182	20 G x 3 ½ in. (Yellow)	25/box, 100/case
405174	18 G x 3 in. (Pink)	25/box, 100/case
405184	18 G x 3 ½ in. (Pink)	25/box, 100/case
<b>BD Quincke Long Length Spinal Needles, Sterile, Single Use</b>		
405234	25 G x 4 11/16 in. (Blue)	10/box, 50/case
405148	22 G x 5 in. (Black)	10/box, 50/case
405149	22 G x 7 in. (Black)	10/box, 50/case
405211	20 G x 6 in. (Yellow)	10/box, 50/case
408360	18 G x 6 in. (Pink)	10/box, 50/case

Reference No.	Product Description	Packaging
<b>Anesthesia/Radiology/Biopsy Specialty Products</b>		
403250	BD Catheter Adapter, Sterile, Single Use	100/box, 1000/case

Reference No.	Product Description	Packaging
<b>BD HeimLich Chest Drain Valve, Sterile</b>		
373460	For drainage of the pleural cavity	10/case



### BD Quincke Point

Available in gauges from 18 to 27 and in lengths from 1" to 7"



# BD Antimicrobial Solutions

## BD E-Z Scrub™ Preoperative Scrub Brushes and Accessories

BD E-Z Scrub™ Surgical Scrub Brushes are designed to provide maximum clinical efficacy.



Reference No.	Product Description	Packaging
<b>BD E-Z Scrub™ Surgical Scrub Brushes</b>		
<b>371073</b>	BD E-Z Scrub™ with 4% CHG	30/box, 300/case
<b>374081</b>	BD E-Z Scrub™ with BD Ultradex™ Solution, 3% Chloroxylenol (PCMX) with emollients (brush/sponge)	30/box, 300/case
<b>371163</b>	BD E-Z Scrub™ with 3% Chloroxylenol (PCMX) (brush/sponge)	30/box, 300/case
<b>372053</b>	BD E-Z Scrub™ with Povidone Iodine, 1% available iodine (brush/sponge)	30/box, 300/case
<b>372453</b>	BD E-Z Scrub™ with Povidone Iodine, 0.5% available iodine (brush/sponge)	30/box, 300/case
<b>371603</b>	BD E-Z Scrub™ dry, no detergent (sterile, brush/sponge)	30/box, 300/case
<b>371901</b>	BD E-Z Scrub™ Brush Stainless Steel Dispenser Bracket	1 bracket/case

## BD E-Z Scrub™ Antimicrobial Foam Solution Dispenser System




Reference No.	Product Description	Packaging
<b>BD E-Z Scrub™ Foot Pump Foamer and Accessories</b>		
<b>372402</b>	BD E-Z Scrub™ Antimicrobial Foam Solution with 4% CHG, 32 oz.	6/case
<b>372404</b>	BD E-Z Scrub™ Antimicrobial Foam Solution with 3% Chloroxylenol (PCMX), 32 oz.	6/case
<b>372405</b>	BD E-Z Scrub™ Antimicrobial Foam Solution with Povidone Iodine, 0.5% available iodine, 32 oz.	6/case
<b>370049</b>	BD Foot Pump Assembly	4/case
<b>370051</b>	BD Foot Pump Assembly (for use with CHG)	4/case
<b>370052</b>	BD Foot Pump Assembly [for use with Chloroxylenol (PCMX)]	4/case
<b>370053</b>	BD Foot Pump Assembly (for use with Povidone Iodine)	4/case
<b>370055</b>	BD In-Line Air Filter	12/box, 144/case
<b>370056</b>	BD Foot Pump Wall Bracket (including adapters)	6/case
<b>370057</b>	BD Foot Pump Wall Bracket Adapter for AMSCO Sinks	6/case
<b>BD E-Z Scrub™ Hand Pump Foamer and Accessories</b>		
<b>372412</b>	BD E-Z Scrub™ Antimicrobial Foam Solution with 4% CHG, 32 oz.	6/case
<b>372415</b>	BD E-Z Scrub™ Antimicrobial Foam Solution with 3% Chloroxylenol (PCMX), 32 oz.	6/case
<b>372416</b>	BD E-Z Scrub™ Antimicrobial Foam Solution with 2% CHG, 32 oz.	6/case
<b>370013</b>	BD Hand Pump Wall Bracket	6/case

# BD Disposal Solutions

## BD Sharps Collectors

BD offers a full line of sharps collectors specifically designed to meet NIOSH guidelines for safe disposal. BD introduces BD Recykleen™ brand, highlighting products made from a minimum of 20, 25, 50, 70 or 100 percent recycled plastic.

Category	Product Description	Reference No.	Color	Packaging
<b>BD Recykleen™ Patient/Exam Room</b>				
 	5.4 qt Patient/Exam Room Counterbalanced Door – 20% Recycled Plastic	<b>305056</b> <b>305057</b>	Pearl Red	20/case
	3 gal Next Generation Counterbalanced Door – 20% Recycled Plastic	<b>305053</b> <b>305054</b>	Pearl Red	10/case
<b>Patient/Exam Room</b>				
	5.4 qt Counterbalanced Door	<b>305517</b>	Red	20/case
		<b>305543</b>	Pearl	20/case
		<b>305551</b>	Clear	20/case
		<b>305426</b>	Red	12/case
		<b>305427</b>	Clear	12/case
	5.4 qt Side Entry	<b>305428</b>	Pearl	12/case
		<b>305443</b>	Red	20/case
		<b>305444</b>	Pearl	20/case
	2 gal Counterbalanced Door	<b>305425</b>	Pearl	12/case
		<b>305422</b>	Pearl	10/case
3 gal Counterbalanced Door	<b>305435</b>	Red	10/case	
	<b>305423</b>	Pearl	10/case	
		<b>305436</b>	Red	10/case
<b>Multi-Use Nestables</b>				
	BD Recykleen™ 8 qt Regular Funnel Clear with Hinged Lid	<b>305059</b>	Red	24/case
	8 qt Open Clear with Hinged Lid	<b>305343</b>	Red	24/case
	8 qt Regular Funnel Clear with Hinged Lid	<b>305344</b>	Red	24/case
	14 qt Small Open Clear with Tethered Lid	<b>305646</b>	Red	20/case
	14 qt Open Clear with Hinged Lid	<b>305456</b>	Red	20/case
	14 qt Regular Funnel Clear with Tethered Lid	<b>305464</b>	Red	20/case
	14 qt Large Funnel Clear with Tethered Lid	<b>305480</b>	Red	20/case
	6 gal Open Clear Top with Hinged Lid	<b>305457</b>	Red	12/case
	6 gal Large Funnel Clear Top with Hinged Lid	<b>305465</b>	Red	12/case
<b>Multi-Use Nestables Accessories</b>				
 	Bracket for 8 qt, 14 qt and 6 gal (collector not included)	<b>305485</b>	Beige	12/case
	Wire Bracket for 8 qt	<b>305018</b>	Beige	6/case
	Stabilizer for 8 qt	<b>305570</b>	Beige	5/case

# BD Disposal Solutions

Category	Product Description	Reference No.	Color	Packaging
<b>Phlebotomy</b>				
	1.5 qt Removal Port Top	<b>305487</b>	Red	36/case
	1 qt Small Open Top	<b>305635</b>	Red	60/case
<b>Phlebotomy Accessories</b>				
	Cup Bracket	<b>305970</b>	Black	12/case
<b>Multi-Use One Piece Collectors</b>				
	1.4 qt Regular Funnel with Tethered Lid	<b>305557</b>	Red	36/case
	3.3 qt Regular Funnel with Tethered Lid	<b>305488</b>	Red	24/case
	6.9 qt Regular Funnel with Tethered Lid	<b>305489</b>	Red	12/case
	6.9 qt Regular Funnel with Tethered Lid	<b>300467*</b>	Red	12/case
	8.2 qt Regular Funnel with Tethered Lid	<b>305490</b>	Red	12/case
	8.2 qt Regular Funnel with Tethered Lid	<b>300470*</b>	Red	12/case
	5 gal Open Top with Hinged Lid	<b>305491</b>	Red	8/case
	5 gal Open Top with Hinged Lid	<b>300473*</b>	Red	8/case
	5 gal Large Funnel Cap with Hinged Lid	<b>305100</b>	Red	10/case
	5 gal Screw Cap with Tethered Lid	<b>305577</b>	Red	8/case
<b>BD Recykleen™ Large and Extra Large Collectors</b>				
	9 gal Slide Top – 50% Recycled Plastic	<b>305025</b>	Red	8/case
	19 gal Slide Top – 50% Recycled Plastic	<b>305026</b>	Red	5/case
	9 gal Hinged Top – 50% Recycled Plastic	<b>305024</b>	Red	8/case
	17 gal Hinged Top – 50% Recycled Plastic	<b>305023</b>	Red	5/case
<b>Large and Extra Large Collectors</b>				
	9 gal Hinged Top	<b>305615</b>	Red	8/case
	9 gal Hinged Top Gasket	<b>305601**</b>	Red	8/case
	9 gal Slide Top	<b>305616</b>	Red	8/case
	9 gal Slide Top Gasket	<b>305602**</b>	Red	8/case
	17 gal Hinged Top	<b>305610</b>	Red	5/case
	17 gal Hinged Top Gasket	<b>305665**</b>	Red	5/case
	19 gal Slide Top	<b>305609</b>	Red	5/case
	19 gal Slide Top Gasket	<b>305666**</b>	Red	5/case



**50%**  
Product made from  
a minimum of 50%  
recycled materials

\*Not Autoclavable

\*\*Meets or exceeds US DOT packaging requirements 49CFR173.24, 49CFR173.24a and 49CFR173.134.

# BD Disposal Solutions

Category	Product Description	Reference No.	Color	Packaging
<b>BD Recycleen™ Pharmaceutical Patient/Exam Room Collectors</b>				
 20% Product made from a minimum of 20% recycled materials	 5.4 qt Patient/Exam Room Counterbalanced Door – 20% Recycled Plastic	<b>305058</b>	White/Blue	20/case
	 3 gal Patient/Exam Room Counterbalanced Door – 20% Recycled Plastic	<b>305055</b>	White/Blue	10/case
<b>Pharmaceutical Collectors</b>				
	5.4 qt Patient/Exam Room	<b>305330</b>	Blue/White	20/case
	3 gal Patient/Exam Room	<b>305622</b>	Blue/White	10/case
	3 gal Plug Cap	<b>305633</b>	Blue/White	12/case
	9 gal Hinge Top	<b>305634</b>	Blue/White	8/case
	9 gal Slide Top	<b>305329</b>	Blue/White	8/case
	17 gal Hinge Top	<b>305028</b>	Blue/White	5/case
	19 gal Slide Top	<b>305328</b>	Blue/White	5/case
<b>Chemotherapy</b>				
	3 gal Plug Cap	<b>305076</b>	Yellow	12/case
	5 gal Plug Cap	<b>305493</b>	Yellow	8/case
	5 gal One Piece Screw Cap	<b>305578</b>	Yellow	8/case
	9 gal Hinged Top	<b>305603</b>	Yellow	8/case
	9 gal Slide Top	<b>305604</b>	Yellow	8/case
	17 gal Slide Top	<b>305614</b>	Yellow	5/case
	19 gal Slide Top	<b>305613</b>	Yellow	5/case
<b>RCRA Solid Hazardous Waste</b>				
	3 gal Funnel with Hinged Lid	<b>305075</b>	Black	12/case
	3 gal Plug Cap with Hinged Lid	<b>305066</b>	Black	12/case
	5 gal Large Open Cap with Hinged Lid	<b>305067</b>	Black	8/case
	9 gal Clear Hinged Top	<b>305068</b>	Black	8/case
	9 gal Clear Slide Top	<b>305069</b>	Black	8/case
	17 gal Hinged Top	<b>305071</b>	Black	5/case
	19 gal Slide Top	<b>305072</b>	Black	5/case
<b>RCRA Solid Hazardous Waste - DOT PGII/UN</b>				
	13 gal DOT Port Top	<b>305073</b>	Black	6/case
	16 gal DOT Port Top	<b>305074</b>	Black	6/case

# BD Disposal Solutions

Category	Product Description	Reference No.	Color	Packaging	
<b>BD Recykleen™ Cabinets</b>					
 <b>100%</b> Product made from 100% recycled materials	 Cabinets for 5.4 qt Collectors Counterbalanced Door – 100% Recycled Plastic	<b>305096</b> <b>305098</b>	Brown Green	1/case	
	Cabinets for 2 & 3 gal Collectors Counterbalanced Door – 100% Recycled Plastic	<b>305097</b> <b>305099</b>	Brown Green	1/case	
<b>Accessories</b>					
 305021 305552	 305448	Locking Bracket for all 5.4 qt Collectors	<b>305447</b>	Beige	10/case
 305409		Locking Bracket for 2 & 3 gal Counterbalanced Door Collectors	<b>305409</b>	Beige	10/case
 305447	 305588	Wire Bracket for 2 & 3 gal Counterbalanced Door Collectors	<b>305588</b>	Beige	6/case
		Stabilizer for all 5.4 qt Collectors	<b>305021</b>	Beige	5/case
		Stabilizer for 2 & 3 gal Counterbalanced Door Collectors	<b>305552</b>	Beige	5/case
		Glove Box	<b>305448</b>	Beige	6/case
 305495	 305497	XL Security Bracket for for 3 & 5 gal	<b>305495</b>	Metal	12/case
 305496		Security Bracket for 6.9 & 8.2 qt	<b>305496</b>	Black	12/case
		Quick-Release Strap for 3.3 qt, 6.9 qt, 8.2 qt and 3 & 5 gal	<b>305497</b>	Black	12/case
<b>BD Recykleen™ Trolley Accessories for Large, Extra Large and Chemotherapy Collectors</b>					
 <b>25%</b> Product made from a minimum of 25% recycled materials		Basic Trolley used with 9 gal Hinged & Slide Top – 25% Recycled Plastic	<b>305090</b>	Gray	1/case
		Foot-operated Trolley used with 9 gal Slide Top – 25% Recycled Plastic	<b>305091</b>	Gray	1/case
		Basic Trolley used with 17 & 19 gal Hinged and Slide Top – 25% Recycled Plastic	<b>305092</b>	Gray	1/case
		Foot-operated Trolley used with 19 gal Slide Top – 25% Recycled Plastic	<b>305093</b>	Gray	1/case



Contact your authorized BD Veterinary distributor  
or VPL at **1.888.241.9545** ([www.vpl.com](http://www.vpl.com))

