

# BD Veterinary Products

Putting Comfort and Safety in Animal Care



# BD Hypodermic Products

## BD Veterinary Syringes VS600

Contains 600 syringes per case to ensure the most cost-effective package available.

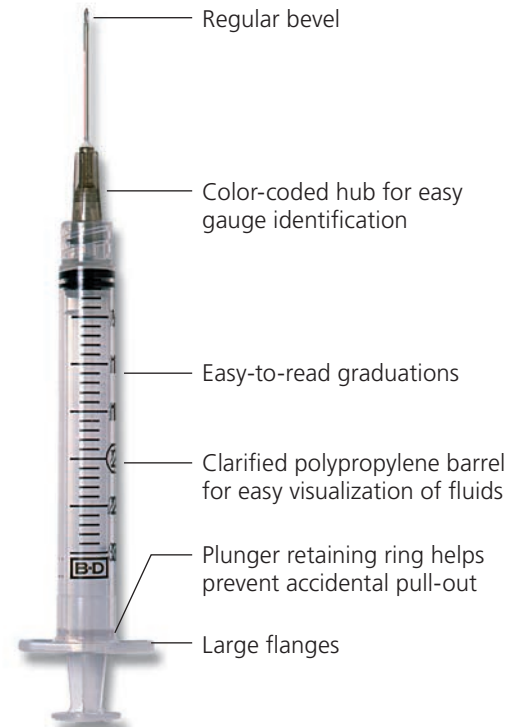
| Reference No.                 | Product Description                                  | Packaging         |
|-------------------------------|--|-------------------|
| <b>BD Veterinary Syringes</b> |  |                   |
| 305660                        | 3 mL BD Luer-Lok™ Syringe with 25 G x 5/8 in. Needle | 600 Syringes/case |
| 305661                        | 3 mL BD Luer-Lok™ Syringe with 22 G x 1 in. Needle   | 600 Syringes/case |
| 305662                        | 3 mL BD Luer-Lok™ Syringe with 22 G x 3/4 in. Needle | 600 Syringes/case |
| 305663                        | 3 mL Slip Tip Syringe with 22 G x 3/4 in. Needle     | 600 Syringes/case |
| 305664                        | 1 mL Slip Tip Syringe with 25 G x 5/8 in. Needle     | 600 Syringes/case |

## BD Syringes with Needles

| Reference No.  | Product Description   | Packaging         |
|--|---|-------------------|
| <b>1/2 mL Syringe with Permanently Attached Needle</b>     |   |                   |
| 305620   | 1/2 mL TB Syringe with 27 G x 1/2 in. Needle                  | 100/box, 500/case |
| <b>1 mL Slip Tip Syringes with Detachable Needles</b>      |   |                   |
| 309623   | 1 mL TB Syringe with 27 G x 1/2 in. Needle                    | 100/box, 800/case |
| 309625   | 1 mL TB Syringe with 26 G x 3/8 in. Needle, Intradermal Bevel | 100/box, 800/case |
| 309597   | 1 mL TB Syringe with 26 G x 5/8 in. Needle, Sub-Q             | 100/box, 800/case |
| 309626   | 1 mL TB Syringe with 25 G x 5/8 in. Needle                    | 100/box, 800/case |
| 309624   | 1 mL TB Syringe with 21 G x 1 in. Needle                      | 100/box, 800/case |
| <b>3 mL Slip Tip Syringe with Detachable Needle</b>        |   |                   |
| 301628   | 3 mL Syringe with 22 G x 3/4 in. Needle                       | 100/box, 800/case |
| <b>1 mL BD Luer-Lok™ Syringe with Detachable Needle</b>    |   |                   |
| 309637   | 1 mL Syringe with 20 G x 1 in. Needle                         | 100/box, 800/case |
| <b>3 mL BD Luer-Lok™ Syringes with Detachable Needles</b>  |   |                   |
| 309582   | 3 mL Syringe with 25 G x 1 1/2 in. Needle                     | 100/box, 800/case |
| 309581   | 3 mL Syringe with 25 G x 1 in. Needle                         | 100/box, 800/case |
| 309570   | 3 mL Syringe with 25 G x 5/8 in. Needle                       | 100/box, 800/case |
| 309571   | 3 mL Syringe with 23 G x 1 in. Needle                         | 100/box, 800/case |
| 309574   | 3 mL Syringe with 22 G x 1 1/2 in. Needle                     | 100/box, 800/case |
| 309572   | 3 mL Syringe with 22 G x 1 in. Needle                         | 100/box, 800/case |
| 309569   | 3 mL Syringe with 22 G x 3/4 in. Needle                       | 100/box, 800/case |
| 309577   | 3 mL Syringe with 21 G x 1 1/2 in. Needle                     | 100/box, 800/case |
| 309575   | 3 mL Syringe with 21 G x 1 in. Needle                         | 100/box, 800/case |
| 309579   | 3 mL Syringe with 20 G x 1 1/2 in. Needle                     | 100/box, 800/case |
| 309578   | 3 mL Syringe with 20 G x 1 in. Needle                         | 100/box, 800/case |
| 309580   | 3 mL Syringe with 18 G x 1 1/2 in. Needle                     | 100/box, 800/case |
| 305060   | 3 mL Syringe with 18 G x 1 1/2 in. Blunt Fill Needle          | 100/box, 800/case |
| <b>5 mL BD Luer-Lok™ Syringes with Detachable Needles</b>  |   |                   |
| 309631   | 5 mL Syringe with 22 G x 1 1/2 in. Needle                     | 100/box, 400/case |
| 309630   | 5 mL Syringe with 22 G x 1 in. Needle                         | 100/box, 400/case |
| 309633   | 5 mL Syringe with 21 G x 1 1/2 in. Needle                     | 100/box, 400/case |
| 309632   | 5 mL Syringe with 21 G x 1 in. Needle                         | 100/box, 400/case |
| 309635   | 5 mL Syringe with 20 G x 1 1/2 in. Needle                     | 100/box, 400/case |
| 309634   | 5 mL Syringe with 20 G x 1 in. Needle                         | 100/box, 400/case |
| 305062   | 5 mL Syringe with 18 G x 1 1/2 in. Blunt Fill Needle          | 100/box, 400/case |
| <b>10 mL BD Luer-Lok™ Syringes with Detachable Needles</b> |   |                   |
| 309640   | 10 mL Syringe with 22 G x 1 in. Needle                        | 100/box, 400/case |
| 309643   | 10 mL Syringe with 21 G x 1 1/2 in. Needle                    | 100/box, 400/case |
| 309642   | 10 mL Syringe with 21 G x 1 in. Needle                        | 100/box, 400/case |
| 309645   | 10 mL Syringe with 20 G x 1 1/2 in. Needle                    | 100/box, 400/case |
| 309644   | 10 mL Syringe with 20 G x 1 in. Needle                        | 100/box, 400/case |
| 305064   | 10 mL Syringe with 18 G x 1 1/2 in. Blunt Fill Needle         | 100/box, 400/case |



Color-coded packaging allows for easy gauge identification



# BD Hypodermic Products

## BD Syringes



| Reference No.              | Product Description                    | Packaging          |
|----------------------------|--|--------------------|
| <b>1 mL Syringes Only</b>  |  |                    |
| 309659                     | 1 mL TB Syringe, Slip Tip              | 200/box, 1600/case |
| 309628                     | 1 mL Syringe, BD Luer-Lok™ Tip         | 100/box, 800/case  |
| <b>3 mL Syringes Only</b>  |  |                    |
| 309656                     | 3 mL Syringe, Slip Tip                 | 200/box, 800/case  |
| 309657                     | 3 mL Syringe, BD Luer-Lok™ Tip         | 200/box, 800/case  |
| <b>5 mL Syringes Only</b>  |  |                    |
| 309647                     | 5 mL Syringe, Slip Tip                 | 125/box, 500/case  |
| 309646                     | 5 mL Syringe, BD Luer-Lok™ Tip         | 125/box, 500/case  |
| <b>10 mL Syringes Only</b> |  |                    |
| 301604                     | 10 mL Syringe, Slip Tip                | 100/box, 400/case  |
| 309604                     | 10 mL Syringe, BD Luer-Lok™ Tip        | 100/box, 400/case  |
| 305482                     | 10 mL Syringe, Eccentric Tip           | 100/box, 400/case  |
| <b>20 mL Syringes Only</b> |  |                    |
| 302831                     | 20 mL Syringe, Slip Tip                | 48/box, 192/case   |
| 302830                     | 20 mL Syringe, BD Luer-Lok™ Tip        | 48/box, 192/case   |
| 300613                     | 20 mL Syringe, Eccentric Tip           | 120/box, 480/case  |
| <b>30 mL Syringes Only</b> |  |                    |
| 302833                     | 30 mL Syringe, Slip Tip                | 56/box, 224/case   |
| 302832                     | 30 mL Syringe, BD Luer-Lok™ Tip        | 56/box, 224/case   |
| <b>60 mL Syringes Only</b> |  |                    |
| 309654                     | 60 mL Syringe, Slip Tip                | 40/box, 160/case   |
| 309653                     | 60 mL Syringe, BD Luer-Lok™ Tip        | 40/box, 160/case   |
| 300866                     | 60 mL Syringe, Eccentric Tip           | 60/box, 240/case   |
| <b>2 oz Syringe Only</b>   |  |                    |
| 309620                     | 2 oz Syringe, Catheter Tip with Shield | 40/box, 160/case   |

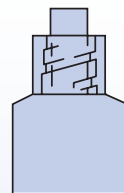
### Types of Syringe Tips:

Different tip designs available for a variety of applications



Slip Tip  
Sizes:

1 mL 20 mL  
3 mL 30 mL  
5 mL 60 mL  
10 mL



BD Luer-Lok™ Tip  
Sizes:

1 mL 20 mL  
3 mL 30 mL  
5 mL 60 mL  
10 mL



Eccentric Tip  
Sizes:

10 mL  
20 mL  
60 mL



Catheter Tip  
Sizes:

2 oz. only

# BD Hypodermic Products

## BD Oral Syringes

| Reference No.                           | Product Description | Packaging         |
|---|---------------------|-------------------|
| <b>Clear Oral Syringes with Tip Cap</b> |                     |                   |
| 305217                                  | 1 mL Oral Syringe   | 100/box, 500/case |
| 305220                                  | 3 mL Oral Syringe   | 100/box, 500/case |
| 305218                                  | 5 mL Oral Syringe   | 100/box, 500/case |
| 305219                                  | 10 mL Oral Syringe  | 100/box, 500/case |
| <b>Amber Oral Syringes with Tip Cap</b> |                     |                   |
| 305207                                  | 1 mL Oral Syringe   | 100/box, 500/case |
| 305210                                  | 3 mL Oral Syringe   | 100/box, 500/case |
| 305208                                  | 5 mL Oral Syringe   | 100/box, 500/case |
| 305209                                  | 10 mL Oral Syringe  | 100/box, 500/case |

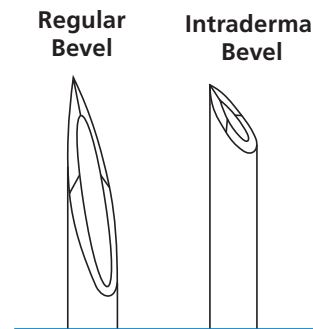


## BD Needles

| Reference No.                      | Product Description                            | Packaging          |
|------------------------------------|--|--------------------|
| <b>BD PrecisionGlide™ Needles*</b> |  |                    |
| 305106                             | 30 G x ½ in. Needle                            | 100/box, 1000/case |
| 305128                             | 30 G x 1 in. Needle                            | 100/box, 1000/case |
| 305109                             | 27 G x ½ in. Needle                            | 100/box, 1000/case |
| 305136                             | 27 G x 1 ¼ in. Needle                          | 100/box, 1000/case |
| 305110                             | 26 G x ¾ in. Needle, Intradermal Bevel         | 100/box, 1000/case |
| 305111                             | 26 G x ½ in. Needle                            | 100/box, 1000/case |
| 305122                             | 25 G x 5/8 in. Needle                          | 100/box, 1000/case |
| 305124                             | 25 G x 7/8 in. Needle                          | 100/box, 1000/case |
| 305125                             | 25 G x 1 in. Needle                            | 100/box, 1000/case |
| 305127                             | 25 G x 1 ½ in. Needle                          | 100/box, 1000/case |
| 305143                             | 23 G x ¾ in. Needle                            | 100/box, 1000/case |
| 305145                             | 23 G x 1 in. Needle                            | 100/box, 1000/case |
| 305120                             | 23 G x 1 ¼ in. Needle                          | 100/box, 1000/case |
| 305155                             | 22 G x 1 in. Needle                            | 100/box, 1000/case |
| 305142                             | 22 G x ¾ in. Needle                            | 100/box, 1000/case |
| 305156                             | 22 G x 1 ½ in. Needle                          | 100/box, 1000/case |
| 305165                             | 21 G x 1 in. Needle                            | 100/box, 1000/case |
| 305167                             | 21 G x 1 ½ in. Needle                          | 100/box, 1000/case |
| 305129                             | 21 G x 2 in. Needle                            | 100/box, 1000/case |
| 305175                             | 20 G x 1 in. Needle                            | 100/box, 1000/case |
| 305176                             | 20 G x 1 ½ in. Needle                          | 100/box, 1000/case |
| 305186                             | 19 G x 1 in. Needle, Thin Wall                 | 100/box, 1000/case |
| 305187                             | 19 G x 1 ½ in. Needle, Thin Wall               | 100/box, 1000/case |
| 305195                             | 18 G x 1 in. Needle                            | 100/box, 1000/case |
| 305196                             | 18 G x 1 ½ in. Needle                          | 100/box, 1000/case |
| 305197                             | 16 G x 1 in. Needle                            | 100/box, 1000/case |
| 305198                             | 16 G x 1 ½ in. Needle                          | 100/box, 1000/case |
| <b>BD Blunt Fill Needles</b>       |  |                    |
| 305180                             | 18 G x 1 ½ in., Blunt Fill Needle              | 100/box, 1000/case |
| 305211                             | 18 G x 1 ½ in., Blunt Filter Needle (5 Micron) | 100/box, 1000/case |

\*all needles are regular bevel unless otherwise noted

A broad line of needle gauges and lengths are available for a variety of applications.



30G

27G

26G

25G

24G

23G

22G

21G

20G

19G

18G

16G

BD Conventional Needle & Syringe Color Chart

# BD Hypodermic Products

## BD Safety-Lok™ Syringes



| Reference No.                  | Product Description                        | Packaging         |
|--------------------------------|--|-------------------|
| <b>BD Safety-Lok™ Syringes</b> |  |                   |
| <b>309606</b>                  | 3 mL Syringe Only                          | 100/box, 800/case |
| <b>309592</b>                  | 3 mL Syringe with 25 G x 5/8 in. Needle    | 100/box, 800/case |
| <b>309594</b>                  | 3 mL Syringe with 23 G x 1 in. Needle      | 100/box, 800/case |
| <b>309593</b>                  | 3 mL Syringe with 22 G x 1 1/2 in. Needle  | 100/box, 800/case |
| <b>309596</b>                  | 3 mL Syringe with 22 G x 1 in. Needle      | 100/box, 800/case |
| <b>309595</b>                  | 3 mL Syringe with 21 G x 1 1/2 in. Needle  | 100/box, 800/case |
| <b>305558</b>                  | 5 mL Syringe Only                          | 50/box, 400/case  |
| <b>305561</b>                  | 5 mL Syringe with 21 G x 1 1/2 in. Needle  | 50/box, 400/case  |
| <b>305559</b>                  | 10 mL Syringe Only                         | 50/box, 400/case  |
| <b>305564</b>                  | 10 mL Syringe with 21 G x 1 1/2 in. Needle | 50/box, 400/case  |

## BD SafetyGlide™ Needles



| Reference No.   | Product Description                        | Packaging        |
|---|--|------------------|
| <b>BD SafetyGlide™ Needles</b>                            |  |                  |
| <b>305921</b>   | 27 G x 5/8 in. Needle                      | 50/box, 500/case |
| <b>305901</b>   | 25 G x 5/8 in. Needle                      | 50/box, 500/case |
| <b>305916</b>   | 25 G x 1 in. Needle                        | 50/box, 500/case |
| <b>305902</b>   | 23 G x 1 in. Needle                        | 50/box, 500/case |
| <b>305900</b>   | 22 G x 1 1/2 in. Needle                    | 50/box, 500/case |
| <b>305915</b>   | 21 G x 1 in. Needle                        | 50/box, 500/case |
| <b>305917</b>   | 21 G x 1 1/2 in. Needle                    | 50/box, 500/case |
| <b>305918</b>   | 18 G x 1 1/2 in. Needle                    | 50/box, 500/case |
| <b>BD SafetyGlide™ Needles with BD Luer-Lok™ Syringes</b> |  |                  |
| <b>305927</b>   | 1 mL Syringe with 27 G x 5/8 in. Needle    | 50/box, 400/case |
| <b>305903</b>   | 1 mL Syringe with 25 G x 5/8 in. Needle    | 50/box, 400/case |
| <b>305904</b>   | 3 mL Syringe with 25 G x 5/8 in. Needle    | 50/box, 400/case |
| <b>305924</b>   | 3 mL Syringe with 25 G x 1 in. Needle      | 50/box, 400/case |
| <b>305905</b>   | 3 mL Syringe with 23 G x 1 in. Needle      | 50/box, 400/case |
| <b>305906</b>   | 3 mL Syringe with 22 G x 1 1/2 in. Needle  | 50/box, 400/case |
| <b>305909</b>   | 3 mL Syringe with 21 G x 1 1/2 in. Needle  | 50/box, 400/case |
| <b>305907</b>   | 5 mL Syringe with 22 G x 1 1/2 in. Needle  | 50/box, 400/case |
| <b>305908</b>   | 10 mL Syringe with 22 G x 1 1/2 in. Needle | 50/box, 400/case |

# BD Hypodermic Products

## BD Eclipse™ Needles



| Reference No.   | Product Description                      | Packaging          |
|---|--|--------------------|
| <b>BD Eclipse™ Needles</b>                            |  |                    |
| <b>305757</b>   | 30 G x ½ in. Needle                      | 100/box, 1200/case |
| <b>305758</b>   | 27 G x ½ in. Needle                      | 100/box, 1200/case |
| <b>305759</b>   | 25 G x ⅝ in. Needle                      | 100/box, 1200/case |
| <b>305761</b>   | 25 G x 1 in. Needle                      | 100/box, 1200/case |
| <b>305767</b>   | 25 G x 1 ½ in. Needle                    | 100/box, 1200/case |
| <b>305762</b>   | 23 G x 1 in. Needle                      | 100/box, 1200/case |
| <b>305768</b>   | 22 G x 1 in. Needle                      | 100/box, 1200/case |
| <b>305763</b>   | 22 G x 1 ½ in. Needle                    | 100/box, 1200/case |
| <b>305764</b>   | 21 G x 1 in. Needle                      | 100/box, 1200/case |
| <b>305765</b>   | 21 G x 1 ½ in. Needle                    | 100/box, 1200/case |
| <b>305766</b>   | 18 G x 1 ½ in. Needle                    | 100/box, 1200/case |
| <b>BD Eclipse™ Needles with BD Luer-Lok™ Syringes</b> |  |                    |
| <b>305778</b>   | 1 mL Syringe with 30 G x ½ in. Needle    | 50/box, 300/case   |
| <b>305789</b>   | 1 mL Syringe with 27 G x ½ in. Needle    | 50/box, 300/case   |
| <b>305780</b>   | 1 mL Syringe with 25 G x ⅝ in. Needle    | 50/box, 300/case   |
| <b>305781</b>   | 3 mL Syringe with 25 G x ⅝ in. Needle    | 50/box, 300/case   |
| <b>305787</b>   | 3 mL Syringe with 25 G x 1 in. Needle    | 50/box, 300/case   |
| <b>305782</b>   | 3 mL Syringe with 23 G x 1 in. Needle    | 50/box, 300/case   |
| <b>305788</b>   | 3 mL Syringe with 22 G x 1 in. Needle    | 50/box, 300/case   |
| <b>305783</b>   | 3 mL Syringe with 22 G x 1 ½ in. Needle  | 50/box, 300/case   |
| <b>305779</b>   | 3 mL Syringe with 21 G x 1 in. Needle    | 50/box, 300/case   |
| <b>305784</b>   | 3 mL Syringe with 21 G x 1 ½ in. Needle  | 50/box, 300/case   |
| <b>305785</b>   | 5 mL Syringe with 22 G x 1 ½ in. Needle  | 50/box, 300/case   |
| <b>305786</b>   | 10 mL Syringe with 22 G x 1 ½ in. Needle | 50/box, 300/case   |

## BD Integra™ Syringes

with Retracting  
BD PrecisionGlide™ Needle



| Reference No.  | Product Description                     | Packaging         |
|--|---|-------------------|
| <b>BD Integra™ 3 mL Syringes with Detachable Needles</b> |   |                   |
| <b>305269</b>  | 3 mL Syringe with 25 G x ⅝ in. Needle   | 100/box, 400/case |
| <b>305270</b>  | 3 mL Syringe with 25 G x 1 in. Needle   | 100/box, 400/case |
| <b>305271</b>  | 3 mL Syringe with 23 G x 1 in. Needle   | 100/box, 400/case |
| <b>305272</b>  | 3 mL Syringe with 22 G x 1 ½ in. Needle | 100/box, 400/case |
| <b>305273</b>  | 3 mL Syringe with 21 G x 1 in. Needle   | 100/box, 400/case |
| <b>305274</b>  | 3 mL Syringe with 21 G x 1 ½ in. Needle | 100/box, 400/case |

# BD Insulin Products

| Reference No.   | Product Description  | Packaging          |
|---|--|--------------------|
| <b>1 mL Insulin Syringes</b>  |  |                    |
| <b>329412</b>   | 1 mL 27 G x 5/8 in. U-100 BD Micro-Fine™ IV  | 100/box, 500/case  |
| <b>329410</b>   | 1 mL 28 G x 1/2 in. U-100 BD Micro-Fine™ IV  | 100/box, 500/case  |
| <b>329424</b>   | 1 mL 28 G x 1/2 in. U-100 BD Micro-Fine™ IV (Orange)                               | 100/box, 500/case  |
| <b>328418</b>   | 1 mL 31 G x 5/16 in. U-100 BD Ultra-Fine™ Short                                    | 100/box, 500/case  |
| <b>BD Lo-Dose™ Insulin Syringes with Permanently Attached Needles</b> |  |                    |
| <b>328438</b>   | 3/10 mL, 31 G x 5/16 in. U-100 BD Ultra-Fine™ Short                                | 100/box, 500/case  |
| <b>309301</b>   | 3/10 mL, 29 G x 1/2 in. U-100 BD Ultra-Fine™                                       | 200/box, 1600/case |
| <b>328430</b>   | 3/10 mL, 28 G x 1/2 in. U-100 BD Micro-Fine™ IV                                    | 100/box, 500/case  |
| <b>328468</b>   | 1/2 mL, 30 G x 5/16 in. U-100 BD Ultra-Fine™ Short                                 | 100/box, 500/case  |
| <b>329465</b>   | 1/2 mL, 28 G x 1/2 in. U-100 BD Micro-Fine™ IV                                     | 100/box, 500/case  |
| <b>28 G Insulin Syringes in Blister Pack</b>                          |  |                    |
| <b>329461</b>   | 1/2 mL BD Lo-Dose™ Insulin Syringe 28 G x 1/2 in. U-100 BD Micro-Fine™ IV (Orange) | 100/box, 500/case  |
| <b>329420</b>   | 1 mL Insulin Syringe 28 G x 1/2 in. U-100 BD Micro-Fine™ IV (Single-Unit Scale)    | 100/box, 500/case  |

## BD Safety-Lok™ Syringes



| Reference No.                  | Product Description   | Packaging         |
|--------------------------------|---|-------------------|
| <b>BD Safety-Lok™ Syringes</b> |   |                   |
| <b>329464</b>                  | 1 mL Insulin Syringe with Permanently Attached 29 G x 1/2 in. U-100 BD Ultra-Fine™ Needle | 100/box, 500/case |
| <b>305553</b>                  | 1 mL Tuberculin Syringe with Permanently Attached 27 G x 1/2 in. Needle                   | 100/box, 500/case |
| <b>305554</b>                  | 1 mL Tuberculin Syringe with Permanently Attached 25 G x 5/8 in. Needle                   | 100/box, 500/case |

## BD SafetyGlide™ Syringes



| Reference No.   | Product Description  | Packaging          |
|---|--|--------------------|
| <b>BD SafetyGlide™ Syringes for Insulin, TB and Allergy</b> |  |                    |
| <b>305930</b>   | 1 mL Insulin Syringe with 29 G x 1/2 in. Needle                | 100/box, 400/case  |
| <b>305932</b>   | 1/2 mL Insulin Syringe with 29 G x 1/2 in. Needle              | 100/box, 400/case  |
| <b>305935</b>   | 3/10 mL Insulin Syringe with 29 G x 1/2 in. Needle             | 100/box, 400/case  |
| <b>305934</b>   | 1/2 mL Insulin Syringe with 30 G x 5/16 in. Needle, Thin Wall  | 100/box, 400/case  |
| <b>305937</b>   | 3/10 mL Insulin Syringe with 31 G x 5/16 in. Needle, Thin Wall | 100/box, 400/case  |
| <b>305945</b>   | 1 mL Tuberculin Syringe with 27 G x 1/2 in. Needle             | 100/box, 400/case  |
| <b>305946</b>   | 1 mL Tuberculin Syringe with 26 G x 3/8 in. Needle (IB)        | 100/box, 400/case  |
| <b>305950</b>   | 1 mL Allergist Tray with 27 G x 1/2 in. Needle (RB)            | 25/tray, 1000/case |
| <b>305951</b>   | 1 mL Allergist Tray with 26 G x 3/8 in. Needle (IB)            | 25/tray, 1000/case |

(IB) Intradermal Bevel  
(RB) Regular Bevel

# BD Infusion Therapy Products



## BD Insyte™ Autoguard™ BC Shielded IV Catheter with Blood Control Technology

BD Insyte™ Autoguard™ BC Shielded IV Catheter is clinically shown to reduce the risk of blood exposure by 95%.<sup>1\*</sup> In a clinical study, 98% of clinicians stated they had no risk of blood exposure during insertion when using BD Insyte™ Autoguard™ BC,<sup>1</sup> which means:

- Less risk of exposure to bloodborne pathogens
- Virtually no clean up of blood spills
- No need to worry about stopping blood<sup>1</sup>
- Lower costs related to clean-up supplies

Incorporates all the standard benefits of BD Insyte™ Autoguard™ catheters with BD Instaflash™ needle technology in 20, 22 and 24 gauge sizes along with push-button shielding technology and BD Vialon™ biomaterial.

| Reference No.     | Description                             | Packaging       |
|-------------------|---|-----------------|
| <b>Non-Winged</b> |   |                 |
| <b>382512</b>     | 24 G x 0.75 in. (0.7 mm x 19 mm) Yellow | 50/box 200/case |
| <b>382523</b>     | 22 G x 1.00 in. (0.9 mm x 25 mm) Blue   | 50/box 200/case |
| <b>382533</b>     | 20 G x 1.00 in. (1.1 mm x 25 mm) Pink   | 50/box 200/case |
| <b>382534</b>     | 20 G x 1.16 in. (1.1 mm x 30 mm) Pink   | 50/box 200/case |
| <b>382537</b>     | 20 G x 1.88 in. (1.1 mm x 48 mm) Pink   | 50/box 200/case |
| <b>382544</b>     | 18 G x 1.16 in. (1.3 mm x 30 mm) Green  | 50/box 200/case |
| <b>382547</b>     | 18 G x 1.88 in. (1.3 mm x 48 mm) Green  | 50/box 200/case |
| <b>382554</b>     | 16 G x 1.16 in. (1.7 mm x 30 mm) Gray   | 50/box 200/case |
| <b>382557</b>     | 16 G x 1.77 in. (1.7 mm x 45 mm) Gray   | 50/box 200/case |
| <b>With Wings</b> |   |                 |
| <b>382612</b>     | 24 G x 0.75 in. (0.7 mm x 19 mm) Yellow | 50/box 200/case |
| <b>382623</b>     | 22 G x 1.00 in. (0.9 mm x 25 mm) Blue   | 50/box 200/case |
| <b>382633</b>     | 20 G x 1.00 in. (1.1 mm x 25 mm) Pink   | 50/box 200/case |
| <b>382634</b>     | 20 G x 1.16 in. (1.1 mm x 30 mm) Pink   | 50/box 200/case |
| <b>382637</b>     | 20 G x 1.88 in. (1.1 mm x 48 mm) Pink   | 50/box 200/case |
| <b>382644</b>     | 18 G x 1.16 in. (1.3 mm x 30 mm) Green  | 50/box 200/case |
| <b>382647</b>     | 18 G x 1.88 in. (1.3 mm x 48 mm) Green  | 50/box 200/case |
| <b>382654</b>     | 16 G x 1.16 in. (1.7 mm x 30 mm) Gray   | 50/box 200/case |
| <b>382657</b>     | 16 G x 1.77 in. (1.7 mm x 45 mm) Gray   | 50/box 200/case |



## BD Insyte™ Autoguard™ Shielded IV Catheter

BD Insyte™ Autoguard™ Shielded IV Catheters mean added safety for you with push-button shielding technology that has been shown to reduce needlestick injuries by 95%.<sup>2\*\*</sup> The unique BD Instaflash™ needle technology in the 20, 22 and 24 gauge sizes is designed to reduce hit-and-miss insertion by confirming vessel entry. Made of clinically proven BD Vialon™ biomaterial designed to soften in the vein and provide greater kink resistance<sup>3</sup> and longer dwell time<sup>4</sup> compared to FEP polymer.

| Reference No.     | Description                             | Packaging        |
|-------------------|---|------------------|
| <b>Non-Winged</b> |   |                  |
| <b>381412</b>     | 24 G x 0.75 in. (0.7 mm x 19 mm) Yellow | 50/box, 200/case |
| <b>381423</b>     | 22 G x 1.00 in. (0.9 mm x 25 mm) Blue   | 50/box, 200/case |
| <b>381433</b>     | 20 G x 1.00 in. (1.1 mm x 25 mm) Pink   | 50/box, 200/case |
| <b>381434</b>     | 20 G x 1.16 in. (1.1 mm x 30 mm) Pink   | 50/box, 200/case |
| <b>381437</b>     | 20 G x 1.88 in. (1.1 mm x 48 mm) Pink   | 50/box, 200/case |
| <b>381444</b>     | 18 G x 1.16 in. (1.3 mm x 30 mm) Green  | 50/box, 200/case |
| <b>381447</b>     | 18 G x 1.88 in. (1.3 mm x 48 mm) Green  | 50/box, 200/case |
| <b>381454</b>     | 16 G x 1.16 in. (1.7 mm x 30 mm) Gray   | 50/box, 200/case |
| <b>381457</b>     | 16 G x 1.77 in. (1.7 mm x 45 mm) Gray   | 50/box, 200/case |
| <b>381467</b>     | 14 G x 1.75 in. (2.1 mm x 45 mm) Orange | 50/box, 200/case |
| <b>With Wings</b> |   |                  |
| <b>381512</b>     | 24 G x 0.75 in. (0.7 mm x 19 mm) Yellow | 50/box, 200/case |
| <b>381523</b>     | 22 G x 1.00 in. (0.9 mm x 25 mm) Blue   | 50/box, 200/case |
| <b>381533</b>     | 20 G x 1.00 in. (1.1 mm x 25 mm) Pink   | 50/box, 200/case |
| <b>381534</b>     | 20 G x 1.16 in. (1.1 mm x 30 mm) Pink   | 50/box, 200/case |
| <b>381537</b>     | 20 G x 1.88 in. (1.1 mm x 48 mm) Pink   | 50/box, 200/case |
| <b>381544</b>     | 18 G x 1.16 in. (1.3 mm x 30 mm) Green  | 50/box, 200/case |
| <b>381547</b>     | 18 G x 1.88 in. (1.3 mm x 48 mm) Green  | 50/box, 200/case |
| <b>381554</b>     | 16 G x 1.16 in. (1.7 mm x 30 mm) Gray   | 50/box, 200/case |
| <b>381557</b>     | 16 G x 1.77 in. (1.7 mm x 45 mm) Gray   | 50/box, 200/case |

\*Compared to non-blood control peripheral IV catheters.

\*\*Compared to non-safety peripheral IV catheters.

<sup>1</sup>Onia R, Eshun-Wilson I, Arce C, et al. Evaluation of a new safety peripheral IV catheter designed to reduce mucocutaneous blood exposure. *Curr Med Res Opin.* 2011;27(7):1339-1346.

<sup>2</sup>Mendelson MH, Lin-Chen BY, Finkelstein-Blond L, Bailey E, Kogan G. Evaluation of a safety IV catheter (IVC) (Becton Dickinson, Insyte Autoguard): final report [abstract]. Eleventh Annual Scientific Meeting Society for Healthcare Epidemiology of America. 2001.

<sup>3</sup>Gaukroger PB, Roberts JG, Manners TA. Infusion thrombophlebitis: a prospective comparison of 645 Vialon and Teflon cannulae in anaesthetic and postoperative use. *Anaesthesia and Intensive Care.* 1988;16:265-271.

<sup>4</sup>Maki DG, Ringer M. Risk factors for infusion-related phlebitis with small peripheral venous catheters. *Annals of Internal Medicine.* 1991;114:845-854.



# BD Infusion Therapy Products



## BD Nexiva™ Closed IV Catheter System

BD Nexiva™ Closed IV Catheter System is a unique all-in-one catheter, extension set and built-in stabilization platform designed to:

- Reduce risk of needlestick injury and minimize blood exposure
- Minimize the potential for contamination as extension is pre-attached
- Minimize catheter movement

On the dual port, a second port allows for simultaneous administration of compatible fluids and medications near the insertion site.

| Reference No.      | Description   | Packaging       |
|--------------------|---|-----------------|
| <b>Dual Port</b>   |   |                 |
| <b>383530</b>      | 24 G x 0.56 in. Dual Port (0.7 mm x 14 mm) Yellow   | 20/box 80/case  |
| <b>383531</b>      | 24 G x 0.75 in. Dual Port (0.7 mm x 19 mm) Yellow   | 20/box 80/case  |
| <b>383532</b>      | 22 G x 1.00 in. Dual Port (0.9 mm x 25 mm) Blue     | 20/box 80/case  |
| <b>383536</b>      | 20 G x 1.00 in. Dual Port (1.1 mm x 25 mm) Pink     | 20/box 80/case  |
| <b>383537</b>      | 20 G x 1.25 in. Dual Port (1.1 mm x 31 mm) Pink     | 20/box 80/case  |
| <b>383538</b>      | 20 G x 1.75 in. Dual Port (1.1 mm x 45 mm) Pink     | 20/box 80/case  |
| <b>383539</b>      | 18 G x 1.25 in. Dual Port (1.3 mm x 31 mm) Green    | 20/box 80/case  |
| <b>383540</b>      | 18 G x 1.75 in. Dual Port (1.3 mm x 45 mm) Green    | 20/box 80/case  |
| <b>Single Port</b> |   |                 |
| <b>383510</b>      | 24 G x 0.56 in. Single Port (0.7 mm x 14 mm) Yellow | 20/box 80/case  |
| <b>383511</b>      | 24 G x 0.75 in. Single Port (0.7 mm x 19 mm) Yellow | 20/box 80/case  |
| <b>383512</b>      | 22 G x 1.00 in. Single Port (0.9 mm x 25 mm) Blue   | 20/box, 80/case |
| <b>383516</b>      | 20 G x 1.00 in. Single Port (1.1 mm x 25 mm) Pink   | 20/box, 80/case |
| <b>383517</b>      | 20 G x 1.25 in. Single Port (1.1 mm x 31 mm) Pink   | 20/box, 80/case |
| <b>383518</b>      | 20 G x 1.75 in. Single Port (1.1 mm x 45 mm) Pink   | 20/box 80/case  |
| <b>383519</b>      | 18 G x 1.25 in. Single Port (1.3 mm x 31 mm) Green  | 20/box 80/case  |
| <b>383520</b>      | 18 G x 1.75 in. Single Port (1.3 mm x 45 mm) Green  | 20/box 80/case  |



## BD Saf-T-Intima™ Closed IV Catheter System

BD Saf-T-Intima™ Closed IV Catheter System made of BD Vialon™ biomaterial is part of our suite of safety catheters that are designed to reduce risk of needlestick injury and minimize blood exposure during venipuncture.

For added versatility, the PRN adapter can be removed to allow for the use of any needleless closed IV access device. The BD Saf-T-Intima™ Closed IV Catheter System with “Y” adapter allows for prepriming and flushing during venipuncture.

| Reference No.                     | Description                             | Packaging        |
|-----------------------------------|---|------------------|
| <b>With Removable PRN Adapter</b> |   |                  |
| <b>383312</b>                     | 24 G x 0.75 in. (0.7 mm x 19 mm) Yellow | 25/box, 200/case |
| <b>383322</b>                     | 22 G x 0.75 in. (0.9 mm x 19 mm) Blue   | 25/box, 200/case |
| <b>383335</b>                     | 20 G x 1.00 in. (1.1 mm x 25 mm) Pink   | 25/box, 200/case |
| <b>With Y Adapter</b>             |   |                  |
| <b>383313</b>                     | 24 G x 0.75 in. (0.7 mm x 19 mm) Yellow | 25/box, 200/case |
| <b>383323</b>                     | 22 G x 0.75 in. (0.9 mm x 19 mm) Blue   | 25/box, 200/case |
| <b>383336</b>                     | 20 G x 1.00 in. (1.1 mm x 25 mm) Pink   | 25/box, 200/case |
| <b>383346</b>                     | 18 G x 1.00 in. (1.3 mm x 25 mm) Green  | 25/box, 200/case |

# BD Infusion Therapy Products

## BD Insyte™ IV Catheter with BD Vialon™ Biomaterial



## BD Insyte-W™ IV Catheter with BD Vialon™ Biomaterial and Wings



## BD Angiocath™ IV Catheter with FEP Polymer

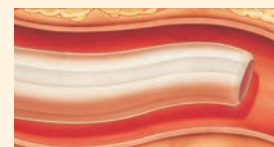


| Reference No.  | Product Description                 | Packaging        |
|--|-------------------------------------|------------------|
| <b>BD Insyte™ IV Catheters with BD Vialon™ Biomaterial</b>             |                                     |                  |
| <b>381212</b>  | 24 G x 0.75 in. (Yellow)            | 50/box, 200/case |
| <b>381223</b>  | 22 G x 1.00 in. (Blue)              | 50/box, 200/case |
| <b>381233</b>  | 20 G x 1.00 in. (Pink)              | 50/box, 200/case |
| <b>381234</b>  | 20 G x 1.16 in. (Pink)              | 50/box, 200/case |
| <b>381237</b>  | 20 G x 1.88 in. (Pink)              | 50/box, 200/case |
| <b>381244</b>  | 18 G x 1.16 in. (Green)             | 50/box, 200/case |
| <b>381247</b>  | 18 G x 1.88 in. (Green)             | 50/box, 200/case |
| <b>381254</b>  | 16 G x 1.16 in. (Gray)              | 50/box, 200/case |
| <b>381257</b>  | 16 G x 1.77 in. (Gray)              | 50/box, 200/case |
| <b>381267</b>  | 14 G x 1.75 in. (Orange)            | 50/box, 200/case |
| <b>BD Insyte-W™ IV Catheters with BD Vialon™ Biomaterial and Wings</b> |                                     |                  |
| <b>381312</b>  | 24 G x 0.75 in. (Yellow)            | 50/box, 200/case |
| <b>381323</b>  | 22 G x 1.00 in. (Blue)              | 50/box, 200/case |
| <b>381333</b>  | 20 G x 1.00 in. (Pink)              | 50/box, 200/case |
| <b>381334</b>  | 20 G x 1.16 in. (Pink)              | 50/box, 200/case |
| <b>381337</b>  | 20 G x 1.88 in. (Pink)              | 50/box, 200/case |
| <b>381344</b>  | 18 G x 1.16 in. (Green)             | 50/box, 200/case |
| <b>381347</b>  | 18 G x 1.88 in. (Green)             | 50/box, 200/case |
| <b>381354</b>  | 16 G x 1.16 in. (Gray)              | 50/box, 200/case |
| <b>381357</b>  | 16 G x 1.77 in. (Gray)              | 50/box, 200/case |
| <b>BD Insyte-N™ IV Catheters with BD Vialon™ Biomaterial</b>           |                                     |                  |
| <b>381211</b>  | 24 G x 0.56 in. (Yellow)            | 50/box, 200/case |
| <b>381311</b>  | 24 G x 0.56 in. (Yellow) with Wings | 50/box, 200/case |

All BD catheters incorporate the sharp BD needle technology and a tapered catheter tip to facilitate penetration and insertion. Gauge sizes are color-coded for easy identification.

### Catheters made with clinically proven BD Vialon™ Biomaterial

- Designed to soften in the vein
- Greater kink resistance<sup>1</sup> and longer dwell time<sup>2</sup> compared to FEP polymer
- Portfolio of products to meet your needs



BD Insyte-N™ and BD Angiocath-N™ IV catheters are designed with BD Instaflash™ needle technology to provide immediate visual confirmation of vessel entry and designed to enhance first-stick success.

| Reference No.  | Product Description          | Packaging        |
|--|------------------------------|------------------|
| <b>BD Angiocath™ IV Catheters</b>                    |                              |                  |
| <b>381112</b>  | 24 G x 0.75 in. (Yellow)     | 50/box, 200/case |
| <b>381123</b>  | 22 G x 1.00 in. (Blue)       | 50/box, 200/case |
| <b>381137</b>  | 20 G x 1.88 in. (Pink)       | 50/box, 200/case |
| <b>381147</b>  | 18 G x 1.88 in. (Green)      | 50/box, 200/case |
| <b>381157</b>  | 16 G x 1.88 in. (Gray)       | 50/box, 200/case |
| <b>381167</b>  | 14 G x 1.88 in. (Orange)     | 50/box, 200/case |
| <b>BD Angiocath™ Catheters for Special Placement</b> |                              |                  |
| <b>382258</b>  | 16 G x 3.25 in. (Gray)       | 10/box, 50/case  |
| <b>382259</b>  | 16 G x 5.25 in. (Gray)       | 10/box, 50/case  |
| <b>382268</b>  | 14 G x 3.25 in. (Orange)     | 10/box, 50/case  |
| <b>382269</b>  | 14 G x 5.25 in. (Orange)     | 10/box, 50/case  |
| <b>382277</b>  | 12 G x 3.00 in. (Light Blue) | 10/box, 50/case  |
| <b>382287</b>  | 10 G x 3.00 in. (Tan)        | 10/box, 50/case  |

<sup>1</sup>Gaukroger PB, Roberts JG, Manners TA. Infusion thrombophlebitis: A prospective comparison of 645 Vialon® and Teflon® cannulae in anaesthetic and postoperative use. *Anesthesia and Intensive Care*. 1988;16:265-271.

<sup>2</sup>Maki D, Ringer M. Risk factors for infusion-related phlebitis with small peripheral venous catheters. *Annals of Internal Medicine*. 1991;114:845-854.

# BD PosiFlush™ Prefilled Syringes

BD PosiFlush™ Prefilled Flush Syringes are syringes specifically designed for flushing and are available in a wide variety of sizes and solutions to meet all your flush protocol requirements.



| Reference No.                              | Product Description                 | NHRIC No.   | Packaging        |
|--|-------------------------------------|-------------|------------------|
| <b>BD PosiFlush™ Heparin Lock Syringes</b> |                                     |             |                  |
| <b>306413</b>                              | 3 mL – 30 units/3mL (10 units/mL)   | 8290-306413 | 30/box, 480/case |
| <b>306414</b>                              | 5 mL – 50 units/5mL (10 units/mL)   | 8290-306414 | 30/box, 480/case |
| <b>306423</b>                              | 3 mL – 300 units/3mL (100 units/mL) | 8290-306423 | 30/box, 480/case |
| <b>306424</b>                              | 5 mL – 500 units/5mL (100 units/mL) | 8290-306424 | 30/box, 480/case |

| Reference No.  | Product Description              | NHRIC No.   | Packaging        |
|--|----------------------------------|-------------|------------------|
| <b>BD PosiFlush™ Saline Syringes, 0.9% Sodium Chloride</b> |                                  |             |                  |
| <b>306544</b>  | 3 mL                             | 8290-306544 | 30/box, 480/case |
| <b>306545</b>  | 5 mL                             | 8290-306545 | 30/box, 480/case |
| <b>306546</b>  | 10 mL                            | 8290-306546 | 30/box, 480/case |
| <b>306549</b>  | 3 mL with Blunt Plastic Cannula  | 8290-306549 | 30/box, 480/case |
| <b>306550</b>  | 5 mL with Blunt Plastic Cannula  | 8290-306550 | 30/box, 480/case |
| <b>306551</b>  | 10 mL with Blunt Plastic Cannula | 8290-306551 | 30/box, 480/case |
| <b>BD PosiFlush™ Sterile Field Saline Syringe</b>          |                                  |             |                  |
| <b>306553</b>  | 10 mL                            | 8290-306553 | 30/box, 240/case |

# BD Vacutainer® Blood Collection Products

## BD Vacutainer® Push Button Blood Collection Sets

The BD Vacutainer® Push Button Blood Collection Set offers split-second protection for that single moment that could potentially change your life. The push-button safety mechanism instantly helps protect you against needlestick injury. It is also offered with a pre-attached holder for added convenience and OSHA single-use holder compliance.



| Reference No.   | Product Description               | Color      | Packaging        |
|---|-----------------------------------|------------|------------------|
| <b>BD Vacutainer® Push Button Blood Collection Sets</b> |                                   |            |                  |
| <b>367338</b>   | With Luer, 21 G, 7 in. Tubing     | Green      | 50/box, 200/case |
| <b>367344</b>   | With Luer, 21 G, 12 in. Tubing    | Green      | 50/box, 200/case |
| <b>367326</b>   | Without Luer, 21 G, 12 in. Tubing | Green      | 50/box, 200/case |
| <b>367336</b>   | With Luer, 23 G, 7 in. Tubing     | Light Blue | 50/box, 200/case |
| <b>367342</b>   | With Luer, 23 G, 12 in. Tubing    | Light Blue | 50/box, 200/case |
| <b>367324</b>   | Without Luer, 23 G, 12 in. Tubing | Light Blue | 50/box, 200/case |
| <b>367335</b>   | With Luer, 25 G, 7 in. Tubing     | Dark Blue  | 50/box, 200/case |
| <b>367341</b>   | With Luer, 25 G, 12 in. Tubing    | Dark Blue  | 50/box, 200/case |
| <b>367323</b>   | Without Luer, 25 G, 12 in. Tubing | Dark Blue  | 50/box, 200/case |

| Reference No.  | Product Description                                     | Color      | Packaging        |
|--|---|------------|------------------|
| <b>BD Vacutainer® Push Button Blood Collection Sets with Pre-Attached Holder</b> |   |            |                  |
| <b>367352</b>  | With Pre-Attached Holder, 21 G x 3/4 in., 12 in. Tubing | Green      | 20/box, 100/case |
| <b>368656</b>  | With Pre-Attached Holder, 23 G x 3/4 in., 12 in. Tubing | Light Blue | 20/box, 100/case |
| <b>368659</b>  | With Pre-Attached Holder, 25 G x 3/4 in., 12 in. Tubing | Dark Blue  | 20/box, 100/case |

Products cleared by U.S. FDA "For Human Use."

# BD Blood Collection Products

## BD Vacutainer® Needle Accessories



| Reference No.                        | Product Description                          | Packaging          |
|--------------------------------------|--|--------------------|
| <b>BD Vacutainer® Holder Options</b> |  |                    |
| 364815                               | BD Vacutainer® One Use Holder                | 250/bag, 1000/case |
| 364597                               | BD Vacutainer® Ribbed Pediatric Tube Adapter | 10/bag, 100/case   |
| <b>BD Vacutainer® Adapter</b>        |  |                    |
| 367290                               | BD Vacutainer® Multiple-Sample Luer Adapter  | 100/box, 1000/case |
| 364902                               | BD Vacutainer® Luer-Lok™ Access Device       | 200/case           |



## BD Vacutainer® Blood Transfer Device

| Reference No.                                      | Product Description                  | Packaging |
|--|--------------------------------------|-----------|
| <b>BD Vacutainer® Specimen Transfer and Access</b> |                                      |           |
| 364880   | BD Vacutainer® Blood Transfer Device | 200/case  |



## BD Microtainer® MAP Microtube for Automated Process

BD Microtainer® MAP Microtube for Automated Process is the first one-piece instrument-compatible microtube to offer both standard full-size patient identification labels as well as compatibility with most automated hematology instruments. The BD Microtainer® MAP tube is designed to improve the accuracy and processing time of capillary blood specimens up to 500 µL.

| Reference No.  | Product Description | Color    | Additive                   | Packaging        |
|--|---------------------|----------|----------------------------|------------------|
| <b>BD Microtainer® MAP Microtube Automated Process</b> |                     |          |                            |                  |
| 363706   | Plastic, 250-500 µL | Lavender | 1.0 mg K <sub>2</sub> EDTA | 50/box, 200/case |

## BD Microtainer® Blood Collection Tubes



Designed for convenience and performance, BD Microtainer® capillary blood collection tubes are non-evacuated and have a texturized inner surface to improve flow and mixability. Printed fill lines avoid overfills. The wider diameter BD Microtainer® Tubes with BD Microgard™ Closure feature an integrated collection scoop and improved mixing ability.

## BD Microtainer® Tubes with BD Microgard™ Closure Tube Guide and Order of Draw

| Catalog #/<br>Closure Color | Additive                                      | Mix by<br>Inverting | Laboratory Use  |
|-----------------------------|---|---------------------|---|
| 365974 Lavender             | K <sub>2</sub> EDTA                           | 10x                 | For whole blood hematology determinations. Tube inversions prevent clotting.            |
| 365965 Green                | Lithium Heparin                               | 10x                 | For plasma determinations in chemistry. Tube inversions prevent clotting.               |
| 365985 Mint Green           | Lithium Heparin and Gel for plasma separation | 10x                 | For plasma determinations in chemistry. Tube inversions prevent clotting.               |
| 365987 Mint Green           |   |                     |   |
| 365992 Grey                 | NaF/Na <sub>2</sub> EDTA                      | 10x                 | For glucose determinations. Tube inversions ensure proper mixing of additive and blood. |
| 365967 Gold                 | Clot Activator and Gel for serum separation   | 5x                  | For serum determinations in chemistry.  |
| 365978 Gold                 |   |                     |   |
| 365963 Red                  | No additive                                   | 0x                  | For serum determinations in chemistry, serology and blood banking.                      |

Products cleared by U.S. FDA "For Human Use."

# BD Blood Collection Products

A full line of BD Vacutainer® Venous Blood Collection Tubes are available in both glass and plastic.



Quality results begin with a quality specimen. BD Diagnostics – Preanalytical Systems is the worldwide leader of evacuated blood collection tubes. We back our products with extensive clinical expertise and educational materials to help you achieve the best possible results. BD Vacutainer® provides a full offering

of blood collection tubes in both glass and plastic. BD Vacutainer® Blood Collection Tubes are clinically proven and supported with numerous clinical studies on a vast array of analytes to document the efficacy, performance characteristics and ease of use of our tubes.

|       |  | BD Vacutainer® Tubes with Hemogard™ Closure                        |  |                    | BD Vacutainer® Tubes with Conventional Stopper   |   |                    |
|-------|--|--|--|--------------------|--|---|--------------------|
| Color | Additive   | Reference No.  | Product Description  | Packaging          | Reference No.                                    | Product Description   | Packaging          |
|       | BD Vacutainer® SST™ Tubes Clot Activator & Gel               | <b>367983*</b>   | Plastic, 3.5 mL, 13 x 75 mm  | 100/box, 1000/case | <b>367981</b>                                    | Plastic, 3.5 mL, 13 x 75 mm   | 100/box, 1000/case |
|       |  | <b>367986</b>  | Plastic, 5.0 mL, 13 x 100 mm   |                    |  |   |                    |
|       | BD Vacutainer RST™ Tubes Thrombin-based Clot Activator & Gel | <b>368774</b>  | Plastic, 5.0 mL, 13 x 100 mm   | 100/box, 1000/case |  |   |                    |
|       | Lithium Heparin (L)  | <b>366664*</b><br><b>367884</b><br><b>367871</b>                   | Plastic, 2.0 mL, 13 x 75 mm (L)<br>Plastic, 4.0 mL, 13 x 75 mm (L)<br>Plastic, 4.0 mL, 13 x 75 mm (S)                      | 100/box, 1000/case | <b>366667*</b><br><b>367880</b><br><b>367874</b> | Plastic, 3.0 mL, 13 x 75 mm (L)<br>Plastic, 10.0 mL, 16 x 100 mm (L)<br>Plastic, 10.0 mL, 16 x 100 mm (S) | 100/box, 1000/case |
|       | Sodium Heparin (S)   | <b>367671*</b>   | Glass, 2.0 mL, 13 x 75 mm (S)  | 100/box, 1000/case | <b>366480</b>                                    | Glass, 10.0 mL, 16 x 100 mm (S)   | 100/box, 1000/case |
|       | Silicone-Coated with Clot Activator                          | <b>367812</b><br><b>367815</b>                                     | Plastic, 4.0 mL, 13 x 75 mm<br>Plastic, 6.0 mL, 13 x 100 mm  | 100/box, 1000/case | <b>366668*</b><br><b>367820</b>                  | Plastic, 3.0 mL, 13 x 75 mm<br>Plastic, 10.0 mL, 16 x 100 mm  | 100/box, 1000/case |
|       | Silicone-Coated  |  |  |                    | <b>366430</b><br><b>366431</b>                   | Glass, 10.0 mL, 16 x 100 mm<br>Glass, 7.0 mL, 13 x 100 mm   | 100/box, 1000/case |
|       | Spray-coated K <sub>2</sub> EDTA (Plastic)                   | <b>367841*</b><br><b>367856</b><br><b>367861</b><br><b>366643</b>  | Plastic, 2.0 mL, 13 x 75 mm<br>Plastic, 3.0 mL, 13 x 75 mm<br>Plastic, 4.0 mL, 13 x 75 mm<br>Plastic, 10.0 mL, 16 x 100 mm | 100/box, 1000/case | <b>367844</b>                                    | Plastic, 4.0 mL, 13 x 75 mm   | 100/box, 1000/case |
|       | Liquid K <sub>3</sub> EDTA (Glass)                           |  |  |                    | <b>364300*</b>                                   | Glass, 2.0 mL, 10.25 x 64 mm  | 100/box, 1000/case |
|       | BD Vacutainer® PST™ Tubes/ Lithium Heparin & Gel             | <b>367960*</b><br><b>367962</b>                                    | Plastic, 3.0 mL, 13 x 75 mm<br>Plastic, 4.5 mL, 13 x 100 mm  | 100/box, 1000/case | <b>368056</b><br><b>367964</b>                   | Plastic, 3.0 mL, 13 x 75 mm<br>Plastic, 8.0 mL, 16 x 100 mm   | 100/box, 1000/case |
|       | Buffered Sodium Citrate 0.105M                               | <b>363080*</b><br><b>363083</b>                                    | Plastic, 1.8 mL, 13 x 75 mm<br>Plastic, 2.7 mL, 13 x 75 mm   | 100/box, 1000/case |  |   |                    |
|       |  | <b>369714</b>  | Glass, 4.5 mL, 13 x 75 mm  | 100/box, 1000/case | <b>366392</b><br><b>366393</b>                   | Glass, 1.8 mL, 10.25 x 47 mm<br>Glass, 2.7 mL, 10.25 x 64 mm  | 100/box, 1000/case |
|       | Fluoride Tubes with Glycolytic Inhibitor                     | <b>367921*</b><br><b>367587*</b><br><b>367922</b><br><b>367925</b> | Plastic, 2.0 mL, 13 x 75 mm<br>Plastic, 2.0 mL, 13 x 75 mm<br>Plastic, 4.0 mL, 13 x 75 mm<br>Plastic, 6.0 mL, 13 x 100 mm  | 100/box, 1000/case |  |   |                    |
|       | No Additive  | <b>366703*</b>   | Plastic, 3.0 mL, 13 x 75 mm  | 100/box, 1000/case |  |   |                    |
|       | No Additive  | <b>366408</b>  | Plastic, 6.0 mL, 13 x 100 mm   | 100/box, 1000/case |  |   |                    |

\*Low-Volume Tubes

Products cleared by U.S. FDA "For Human Use."

# BD Blood Collection Products

## BD Safety-Engineered Blood Collection Devices



**BD Vacutainer® Eclipse™  
Blood Collection Needles**



**BD Vacutainer® Safety-Lok™  
Blood Collection Sets**

| Reference No.  | Product Description                            | Packaging        |
|--|--|------------------|
| <b>BD Vacutainer® Eclipse™ Blood Collection Needles and Holder Options</b> |  |                  |
| <b>368607</b>  | 21 G x 1 ¼ in. Needle                          | 48/box, 480/case |
| <b>368608</b>  | 22 G x 1 ¼ in. Needle                          | 48/box, 480/case |
| <b>368650</b>  | 21 G x 1 ¼ in. Needle with Pre-Attached Holder | 100/case         |
| <b>368651</b>  | 22 G x 1 ¼ in. Needle with Pre-Attached Holder | 100/case         |

| Reference No.                                      | Product Description   | Packaging          |
|--|---|--------------------|
| <b>BD Vacutainer® Urine Bulk Products</b>          |   |                    |
| <b>364966</b>                                      | Urine Transfer Straw  | 100/box, 1000/case |
| <b>364951</b>                                      | <b>Bulk Tube:</b> 4.0 mL, 13 x 75 mm Plastic C&S Preservative Tube              | 100/box, 1000/case |
| <b>364979</b>                                      | <b>Bulk Tube:</b> 10.0 mL, 16 x 100 mm Plastic Round Bottom Tube for Urinalysis | 100/box, 1000/case |
| <b>364980</b>                                      | <b>Bulk Tube:</b> 8.0 mL, 16 x 100 mm Plastic Conical Tube for Urinalysis       | 100/box, 1000/case |
| <b>BD Vacutainer® Tubes with Hemogard™ Closure</b> |   |                    |
| <b>366703</b>                                      | Plastic, 3.0 mL, 13 x 75 mm   | 100/box, 1000/case |
| <b>366408</b>                                      | Plastic, 6.0 mL, 13 x 100 mm  | 100/box, 1000/case |

| Reference No.   | Product Description                                   | Packaging        |
|---|---|------------------|
| <b>BD Vacutainer® Safety-Lok™ Blood Collection Sets for Blood Collection and Infusion</b> |   |                  |
| <b>367281</b>   | with Luer, 21 G x ¾ in. 12 in. Tube                   | 50/box, 200/case |
| <b>367283</b>   | with Luer, 23 G x ¾ in. 12 in. Tube                   | 50/box, 200/case |
| <b>367285</b>   | with Luer, 25 G x ¾ in. 12 in. Tube                   | 50/box, 200/case |
| <b>367287</b>   | with Luer, 21 G x ¾ in. 7 in. Tube                    | 50/box, 200/case |
| <b>367292</b>   | with Luer, 23 G x ¾ in. 7 in. Tube                    | 50/box, 200/case |
| <b>367294</b>   | with Luer, 25 G x ¾ in. 7 in. Tube                    | 50/box, 200/case |
| <b>367296</b>   | without Luer, 21 G x ¾ in. 12 in. Tube                | 50/box, 200/case |
| <b>367297</b>   | without Luer, 23 G x ¾ in. 12 in. Tube                | 50/box, 200/case |
| <b>367298</b>   | without Luer, 25 G x ¾ in. 12 in. Tube                | 50/box, 200/case |
| <b>368652</b>   | With Pre-Attached Holder, 21 G x ¾ in., 12 in. Tubing | 25/box, 200/case |
| <b>368653</b>   | With Pre-Attached Holder, 23 G x ¾ in., 12 in. Tubing | 25/box, 200/case |

Products cleared by U.S. FDA "For Human Use."

# BD Anesthesia Products

## BD Spinal Needles

| Reference No.   | Product Description        | Packaging        |
|---|----------------------------|------------------|
| <b>BD Quincke Spinal Needles, Sterile, Single Use</b>             |                            |                  |
| 405081  | 27 G x 3 ½ in. (Gray)      | 25/box, 100/case |
| 405164  | 26 G x 3 ½ in. (Tan)       | 25/box, 100/case |
| 405170  | 25 G x 3 in. (Blue)        | 25/box, 100/case |
| 405180  | 25 G x 3 ½ in. (Blue)      | 25/box, 100/case |
| 400106  | 23 G x 3 ½ in. (Turquoise) | 25/box, 100/case |
| 405161  | 22 G x 1 ½ in. (Black)     | 25/box, 100/case |
| 405074  | 22 G x 2 ½ in. (Black)     | 25/box, 100/case |
| 405171  | 22 G x 3 in. (Black)       | 25/box, 100/case |
| 405181  | 22 G x 3 ½ in. (Black)     | 25/box, 100/case |
| 405162  | 20 G x 1 ½ in. (Yellow)    | 25/box, 100/case |
| 405071  | 20 G x 2 ½ in. (Yellow)    | 25/box, 100/case |
| 405172  | 20 G x 3 in. (Yellow)      | 25/box, 100/case |
| 405182  | 20 G x 3 ½ in. (Yellow)    | 25/box, 100/case |
| 405174  | 18 G x 3 in. (Pink)        | 25/box, 100/case |
| 405184  | 18 G x 3 ½ in. (Pink)      | 25/box, 100/case |
| <b>BD Quincke Long Length Spinal Needles, Sterile, Single Use</b> |                            |                  |
| 405234  | 25 G x 4 11/16 in. (Blue)  | 10/box, 50/case  |
| 405148  | 22 G x 5 in. (Black)       | 10/box, 50/case  |
| 405149  | 22 G x 7 in. (Black)       | 10/box, 50/case  |
| 405211  | 20 G x 6 in. (Yellow)      | 10/box, 50/case  |
| 408360  | 18 G x 6 in. (Pink)        | 10/box, 50/case  |

| Reference No.   | Product Description                      | Packaging          |
|---|--|--------------------|
| <b>Anesthesia/Radiology/Biopsy Specialty Products</b> |  |                    |
| 403250  | BD Catheter Adapter, Sterile, Single Use | 100/box, 1000/case |

| Reference No.                                 | Product Description                | Packaging |
|---|------------------------------------|-----------|
| <b>BD HeimLich Chest Drain Valve, Sterile</b> |                                    |           |
| 373460  | For drainage of the pleural cavity | 10/case   |



### BD Quincke Point

Available in gauges from 18 to 27 and in lengths from 1" to 7"



# BD Antimicrobial Solutions

## BD E-Z Scrub™ Preoperative Scrub Brushes and Accessories

BD E-Z Scrub™ Surgical Scrub Brushes are designed to provide maximum clinical efficacy.



| Reference No.                               | Product Description  | Packaging        |
|---|--|------------------|
| <b>BD E-Z Scrub™ Surgical Scrub Brushes</b> |  |                  |
| <b>371073</b>                               | BD E-Z Scrub™ with 4% CHG  | 30/box, 300/case |
| <b>374081</b>                               | BD E-Z Scrub™ with BD Ultradex™ Solution, 3% Chloroxylenol (PCMX) with emollients (brush/sponge) | 30/box, 300/case |
| <b>371163</b>                               | BD E-Z Scrub™ with 3% Chloroxylenol (PCMX) (brush/sponge)  | 30/box, 300/case |
| <b>372053</b>                               | BD E-Z Scrub™ with Povidone Iodine, 1% available iodine (brush/sponge)                           | 30/box, 300/case |
| <b>372453</b>                               | BD E-Z Scrub™ with Povidone Iodine, 0.5% available iodine (brush/sponge)                         | 30/box, 300/case |
| <b>371603</b>                               | BD E-Z Scrub™ dry, no detergent (sterile, brush/sponge)  | 30/box, 300/case |
| <b>371901</b>                               | BD E-Z Scrub™ Brush Stainless Steel Dispenser Bracket  | 1 bracket/case   |

## BD E-Z Scrub™ Antimicrobial Foam Solution Dispenser System




| Reference No.   | Product Description   | Packaging        |
|---|---|------------------|
| <b>BD E-Z Scrub™ Foot Pump Foamer and Accessories</b> |   |                  |
| <b>372402</b>   | BD E-Z Scrub™ Antimicrobial Foam Solution with 4% CHG, 32 oz.                                 | 6/case           |
| <b>372404</b>   | BD E-Z Scrub™ Antimicrobial Foam Solution with 3% Chloroxylenol (PCMX), 32 oz.                | 6/case           |
| <b>372405</b>   | BD E-Z Scrub™ Antimicrobial Foam Solution with Povidone Iodine, 0.5% available iodine, 32 oz. | 6/case           |
| <b>370049</b>   | BD Foot Pump Assembly   | 4/case           |
| <b>370051</b>   | BD Foot Pump Assembly (for use with CHG)  | 4/case           |
| <b>370052</b>   | BD Foot Pump Assembly [for use with Chloroxylenol (PCMX)]                                     | 4/case           |
| <b>370053</b>   | BD Foot Pump Assembly (for use with Povidone Iodine)  | 4/case           |
| <b>370055</b>   | BD In-Line Air Filter   | 12/box, 144/case |
| <b>370056</b>   | BD Foot Pump Wall Bracket (including adapters)  | 6/case           |
| <b>370057</b>   | BD Foot Pump Wall Bracket Adapter for AMSCO Sinks   | 6/case           |
| <b>BD E-Z Scrub™ Hand Pump Foamer and Accessories</b> |   |                  |
| <b>372412</b>   | BD E-Z Scrub™ Antimicrobial Foam Solution with 4% CHG, 32 oz.                                 | 6/case           |
| <b>372415</b>   | BD E-Z Scrub™ Antimicrobial Foam Solution with 3% Chloroxylenol (PCMX), 32 oz.                | 6/case           |
| <b>372416</b>   | BD E-Z Scrub™ Antimicrobial Foam Solution with 2% CHG, 32 oz.                                 | 6/case           |
| <b>370013</b>   | BD Hand Pump Wall Bracket   | 6/case           |

# BD Disposal Solutions

## BD Sharps Collectors

BD offers a full line of sharps collectors specifically designed to meet NIOSH guidelines for safe disposal. BD introduces BD Recykleen™ brand, highlighting products made from a minimum of 20, 25, 50, 70 or 100 percent recycled plastic.

| Category  | Product Description  | Reference No.                  | Color        | Packaging |
|---|--|--------------------------------|--------------|-----------|
| <b>BD Recykleen™ Patient/Exam Room</b>  |  |                                |              |           |
|        | 5.4 qt Patient/Exam Room Counterbalanced Door – 20% Recycled Plastic | <b>305056</b><br><b>305057</b> | Pearl<br>Red | 20/case   |
|   | 3 gal Next Generation Counterbalanced Door – 20% Recycled Plastic    | <b>305053</b><br><b>305054</b> | Pearl<br>Red | 10/case   |
| <b>Patient/Exam Room</b>  |  |                                |              |           |
|   | 5.4 qt Counterbalanced Door  | <b>305517</b>                  | Red          | 20/case   |
|   |  | <b>305543</b>                  | Pearl        | 20/case   |
|   |  | <b>305551</b>                  | Clear        | 20/case   |
|   |  | <b>305426</b>                  | Red          | 12/case   |
|   |  | <b>305427</b>                  | Clear        | 12/case   |
|   | 5.4 qt Side Entry  | <b>305428</b>                  | Pearl        | 12/case   |
|   |  | <b>305443</b>                  | Red          | 20/case   |
|   | 2 gal Counterbalanced Door   | <b>305444</b>                  | Pearl        | 20/case   |
|   |  | <b>305425</b>                  | Pearl        | 12/case   |
|   | 3 gal Counterbalanced Door   | <b>305422</b>                  | Pearl        | 10/case   |
| <b>305435</b>   |  | Red                            | 10/case      |           |
| <b>Multi-Use Nestables</b>  |  |                                |              |           |
|    | BD Recykleen™ 8 qt Regular Funnel Clear with Hinged Lid              | <b>305059</b>                  | Red          | 24/case   |
|   | 8 qt Open Clear with Hinged Lid                                      | <b>305343</b>                  | Red          | 24/case   |
|   | 8 qt Regular Funnel Clear with Hinged Lid                            | <b>305344</b>                  | Red          | 24/case   |
|   | 14 qt Small Open Clear with Tethered Lid                             | <b>305646</b>                  | Red          | 20/case   |
|   | 14 qt Open Clear with Hinged Lid                                     | <b>305456</b>                  | Red          | 20/case   |
|   | 14 qt Regular Funnel Clear with Tethered Lid                         | <b>305464</b>                  | Red          | 20/case   |
|   | 14 qt Large Funnel Clear with Tethered Lid                           | <b>305480</b>                  | Red          | 20/case   |
|   | 6 gal Open Clear Top with Hinged Lid                                 | <b>305457</b>                  | Red          | 12/case   |
|   | 6 gal Large Funnel Clear Top with Hinged Lid                         | <b>305465</b>                  | Red          | 12/case   |
| <b>Multi-Use Nestables Accessories</b>  |  |                                |              |           |
|   | Bracket for 8 qt, 14 qt and 6 gal (collector not included)           | <b>305485</b>                  | Beige        | 12/case   |
|   | Wire Bracket for 8 qt  | <b>305018</b>                  | Beige        | 6/case    |
|   | Stabilizer for 8 qt  | <b>305570</b>                  | Beige        | 5/case    |

# BD Disposal Solutions

| Category  | Product Description                      | Reference No.   | Color  | Packaging |
|---|--|-----------------|--------|-----------|
| <b>Phlebotomy</b>   |  |                 |        |           |
|    | 1.5 qt Removal Port Top                  | <b>305487</b>   | Red    | 36/case   |
|   | 1 qt Small Open Top                      | <b>305635</b>   | Red    | 60/case   |
| <b>Phlebotomy Accessories</b>   |  |                 |        |           |
|    | Cup Bracket                              | <b>305970</b>   | Black  | 12/case   |
| <b>Multi-Use One Piece Collectors</b>   |  |                 |        |           |
|   | 1.4 qt Regular Funnel with Tethered Lid  | <b>305557</b>   | Red    | 36/case   |
|   | 3.3 qt Regular Funnel with Tethered Lid  | <b>305488</b>   | Red    | 24/case   |
|   | 6.9 qt Regular Funnel with Tethered Lid  | <b>305489</b>   | Red    | 12/case   |
|   | 6.9 qt Regular Funnel with Tethered Lid  | <b>300467*</b>  | Red    | 12/case   |
|   | 8.2 qt Regular Funnel with Tethered Lid  | <b>305490</b>   | Red    | 12/case   |
|   | 8.2 qt Regular Funnel with Tethered Lid  | <b>300470*</b>  | Red    | 12/case   |
|   | 5 gal Open Top with Hinged Lid           | <b>305491</b>   | Red    | 8/case    |
|   | 5 gal Open Top with Hinged Lid           | <b>300473*</b>  | Red    | 8/case    |
|   | 5 gal Large Funnel Cap with Hinged Lid   | <b>305100</b>   | Red    | 10/case   |
| 5 gal Screw Cap with Tethered Lid   | <b>305577</b>                            | Red             | 8/case |           |
| <b>BD Recykleen™ Large and Extra Large Collectors</b>                               |  |                 |        |           |
|  | 9 gal Slide Top – 50% Recycled Plastic   | <b>305025</b>   | Red    | 8/case    |
|   | 19 gal Slide Top – 50% Recycled Plastic  | <b>305026</b>   | Red    | 5/case    |
|   | 9 gal Hinged Top – 50% Recycled Plastic  | <b>305024</b>   | Red    | 8/case    |
|   | 17 gal Hinged Top – 50% Recycled Plastic | <b>305023</b>   | Red    | 5/case    |
| <b>Large and Extra Large Collectors</b>   |  |                 |        |           |
|  | 9 gal Hinged Top                         | <b>305615</b>   | Red    | 8/case    |
|   | 9 gal Hinged Top Gasket                  | <b>305601**</b> | Red    | 8/case    |
|   | 9 gal Slide Top                          | <b>305616</b>   | Red    | 8/case    |
|   | 9 gal Slide Top Gasket                   | <b>305602**</b> | Red    | 8/case    |
|   | 17 gal Hinged Top                        | <b>305610</b>   | Red    | 5/case    |
|   | 17 gal Hinged Top Gasket                 | <b>305665**</b> | Red    | 5/case    |
|   | 19 gal Slide Top                         | <b>305609</b>   | Red    | 5/case    |
|   | 19 gal Slide Top Gasket                  | <b>305666**</b> | Red    | 5/case    |



**50%**  
Product made from  
a minimum of 50%  
recycled materials

\*Not Autoclavable

\*\*Meets or exceeds US DOT packaging requirements 49CFR173.24, 49CFR173.24a and 49CFR173.134.

# BD Disposal Solutions

| Category   | Product Description   | Reference No. | Color      | Packaging |
|--|---|---------------|------------|-----------|
| <b>BD Recycleen™ Pharmaceutical Patient/Exam Room Collectors</b>   |   |               |            |           |
| <br>20%<br>Product made from a minimum of 20% recycled materials | <br>5.4 qt Patient/Exam Room Counterbalanced Door – 20% Recycled Plastic | <b>305058</b> | White/Blue | 20/case   |
|  | <br>3 gal Patient/Exam Room Counterbalanced Door – 20% Recycled Plastic  | <b>305055</b> | White/Blue | 10/case   |
| <b>Pharmaceutical Collectors</b>   |   |               |            |           |
|   | 5.4 qt Patient/Exam Room  | <b>305330</b> | Blue/White | 20/case   |
|  | 3 gal Patient/Exam Room   | <b>305622</b> | Blue/White | 10/case   |
|  | 3 gal Plug Cap  | <b>305633</b> | Blue/White | 12/case   |
|  | 9 gal Hinge Top   | <b>305634</b> | Blue/White | 8/case    |
|  | 9 gal Slide Top   | <b>305329</b> | Blue/White | 8/case    |
|  | 17 gal Hinge Top  | <b>305028</b> | Blue/White | 5/case    |
|  | 19 gal Slide Top  | <b>305328</b> | Blue/White | 5/case    |
| <b>Chemotherapy</b>  |   |               |            |           |
|    | 3 gal Plug Cap  | <b>305076</b> | Yellow     | 12/case   |
|  | 5 gal Plug Cap  | <b>305493</b> | Yellow     | 8/case    |
|  | 5 gal One Piece Screw Cap   | <b>305578</b> | Yellow     | 8/case    |
|  | 9 gal Hinged Top  | <b>305603</b> | Yellow     | 8/case    |
|  | 9 gal Slide Top   | <b>305604</b> | Yellow     | 8/case    |
|  | 17 gal Slide Top  | <b>305614</b> | Yellow     | 5/case    |
|  | 19 gal Slide Top  | <b>305613</b> | Yellow     | 5/case    |
| <b>RCRA Solid Hazardous Waste</b>  |   |               |            |           |
|   | 3 gal Funnel with Hinged Lid  | <b>305075</b> | Black      | 12/case   |
|  | 3 gal Plug Cap with Hinged Lid  | <b>305066</b> | Black      | 12/case   |
|  | 5 gal Large Open Cap with Hinged Lid  | <b>305067</b> | Black      | 8/case    |
|  | 9 gal Clear Hinged Top  | <b>305068</b> | Black      | 8/case    |
|  | 9 gal Clear Slide Top   | <b>305069</b> | Black      | 8/case    |
|  | 17 gal Hinged Top   | <b>305071</b> | Black      | 5/case    |
|  | 19 gal Slide Top  | <b>305072</b> | Black      | 5/case    |
| <b>RCRA Solid Hazardous Waste - DOT PGII/UN</b>  |   |               |            |           |
|   | 13 gal DOT Port Top   | <b>305073</b> | Black      | 6/case    |
|  | 16 gal DOT Port Top   | <b>305074</b> | Black      | 6/case    |

# BD Disposal Solutions

| Category   | Product Description   | Reference No.                  | Color          | Packaging |
|--|---|--------------------------------|----------------|-----------|
| <b>BD Recykleen™ Cabinets</b>  |   |                                |                |           |
|  <b>100%</b><br>Product made from 100% recycled materials              |  Cabinets for 5.4 qt Collectors<br>Counterbalanced Door –<br>100% Recycled Plastic | <b>305096</b><br><b>305098</b> | Brown<br>Green | 1/case    |
|  | Cabinets for 2 & 3 gal Collectors<br>Counterbalanced Door –<br>100% Recycled Plastic  | <b>305097</b><br><b>305099</b> | Brown<br>Green | 1/case    |
| <b>Accessories</b>   |   |                                |                |           |
|    | Locking Bracket for<br>all 5.4 qt Collectors  | <b>305447</b>                  | Beige          | 10/case   |
|  | Locking Bracket for 2 & 3 gal<br>Counterbalanced Door Collectors  | <b>305409</b>                  | Beige          | 10/case   |
|  | Wire Bracket for 2 & 3 gal<br>Counterbalanced Door Collectors   | <b>305588</b>                  | Beige          | 6/case    |
|  | Stabilizer for all 5.4 qt Collectors  | <b>305021</b>                  | Beige          | 5/case    |
|  | Stabilizer for 2 & 3 gal<br>Counterbalanced Door Collectors   | <b>305552</b>                  | Beige          | 5/case    |
|  | Glove Box   | <b>305448</b>                  | Beige          | 6/case    |
|  | XL Security Bracket for for 3 & 5 gal   | <b>305495</b>                  | Metal          | 12/case   |
|  | Security Bracket for 6.9 & 8.2 qt   | <b>305496</b>                  | Black          | 12/case   |
|  | Quick-Release Strap for 3.3 qt,<br>6.9 qt, 8.2 qt and 3 & 5 gal   | <b>305497</b>                  | Black          | 12/case   |
| <b>BD Recykleen™ Trolley Accessories for Large, Extra Large and Chemotherapy Collectors</b>  |   |                                |                |           |
|  <b>25%</b><br>Product made from a minimum of 25% recycled materials | Basic Trolley used with<br>9 gal Hinged & Slide Top –<br>25% Recycled Plastic   | <b>305090</b>                  | Gray           | 1/case    |
|  | Foot-operated Trolley<br>used with 9 gal Slide Top –<br>25% Recycled Plastic  | <b>305091</b>                  | Gray           | 1/case    |
|  | Basic Trolley<br>used with 17 & 19 gal Hinged and<br>Slide Top – 25% Recycled Plastic   | <b>305092</b>                  | Gray           | 1/case    |
|  | Foot-operated Trolley<br>used with 19 gal Slide Top –<br>25% Recycled Plastic   | <b>305093</b>                  | Gray           | 1/case    |



Contact your authorized BD Veterinary distributor  
or VPL at **1.888.241.9545** ([www.vpl.com](http://www.vpl.com))

