

BD Veterinary Products

Putting Comfort and Safety in Animal Care



BD Hypodermic Products

BD Veterinary Syringes VS600

Contains 600 syringes per case to ensure the most cost-effective package available.

Reference No.	Product Description	Packaging
BD Veterinary Syringes		
305660	3 mL BD Luer-Lok™ Syringe with 25 G x 5/8 in. Needle	600 Syringes/case
305661	3 mL BD Luer-Lok™ Syringe with 22 G x 1 in. Needle	600 Syringes/case
305662	3 mL BD Luer-Lok™ Syringe with 22 G x 3/4 in. Needle	600 Syringes/case
305663	3 mL Slip Tip Syringe with 22 G x 3/4 in. Needle	600 Syringes/case
305664	1 mL Slip Tip Syringe with 25 G x 5/8 in. Needle	600 Syringes/case

BD Syringes with Needles

Reference No.	Product Description	Packaging
1/2 mL Syringe with Permanently Attached Needle		
305620	1/2 mL TB Syringe with 27 G x 1/2 in. Needle	100/box, 500/case
1 mL Slip Tip Syringes with Detachable Needles		
309623	1 mL TB Syringe with 27 G x 1/2 in. Needle	100/box, 800/case
309625	1 mL TB Syringe with 26 G x 3/8 in. Needle, Intradermal Bevel	100/box, 800/case
309597	1 mL TB Syringe with 26 G x 5/8 in. Needle, Sub-Q	100/box, 800/case
309626	1 mL TB Syringe with 25 G x 5/8 in. Needle	100/box, 800/case
309624	1 mL TB Syringe with 21 G x 1 in. Needle	100/box, 800/case
3 mL Slip Tip Syringe with Detachable Needle		
301628	3 mL Syringe with 22 G x 3/4 in. Needle	100/box, 800/case
1 mL BD Luer-Lok™ Syringe with Detachable Needle		
309637	1 mL Syringe with 20 G x 1 in. Needle	100/box, 800/case
3 mL BD Luer-Lok™ Syringes with Detachable Needles		
309582	3 mL Syringe with 25 G x 1 1/2 in. Needle	100/box, 800/case
309581	3 mL Syringe with 25 G x 1 in. Needle	100/box, 800/case
309570	3 mL Syringe with 25 G x 5/8 in. Needle	100/box, 800/case
309571	3 mL Syringe with 23 G x 1 in. Needle	100/box, 800/case
309574	3 mL Syringe with 22 G x 1 1/2 in. Needle	100/box, 800/case
309572	3 mL Syringe with 22 G x 1 in. Needle	100/box, 800/case
309569	3 mL Syringe with 22 G x 3/4 in. Needle	100/box, 800/case
309577	3 mL Syringe with 21 G x 1 1/2 in. Needle	100/box, 800/case
309575	3 mL Syringe with 21 G x 1 in. Needle	100/box, 800/case
309579	3 mL Syringe with 20 G x 1 1/2 in. Needle	100/box, 800/case
309578	3 mL Syringe with 20 G x 1 in. Needle	100/box, 800/case
309580	3 mL Syringe with 18 G x 1 1/2 in. Needle	100/box, 800/case
305060	3 mL Syringe with 18 G x 1 1/2 in. Blunt Fill Needle	100/box, 800/case
5 mL BD Luer-Lok™ Syringes with Detachable Needles		
309631	5 mL Syringe with 22 G x 1 1/2 in. Needle	100/box, 400/case
309630	5 mL Syringe with 22 G x 1 in. Needle	100/box, 400/case
309633	5 mL Syringe with 21 G x 1 1/2 in. Needle	100/box, 400/case
309632	5 mL Syringe with 21 G x 1 in. Needle	100/box, 400/case
309635	5 mL Syringe with 20 G x 1 1/2 in. Needle	100/box, 400/case
309634	5 mL Syringe with 20 G x 1 in. Needle	100/box, 400/case
305062	5 mL Syringe with 18 G x 1 1/2 in. Blunt Fill Needle	100/box, 400/case
10 mL BD Luer-Lok™ Syringes with Detachable Needles		
309640	10 mL Syringe with 22 G x 1 in. Needle	100/box, 400/case
309643	10 mL Syringe with 21 G x 1 1/2 in. Needle	100/box, 400/case
309642	10 mL Syringe with 21 G x 1 in. Needle	100/box, 400/case
309645	10 mL Syringe with 20 G x 1 1/2 in. Needle	100/box, 400/case
309644	10 mL Syringe with 20 G x 1 in. Needle	100/box, 400/case
305064	10 mL Syringe with 18 G x 1 1/2 in. Blunt Fill Needle	100/box, 400/case

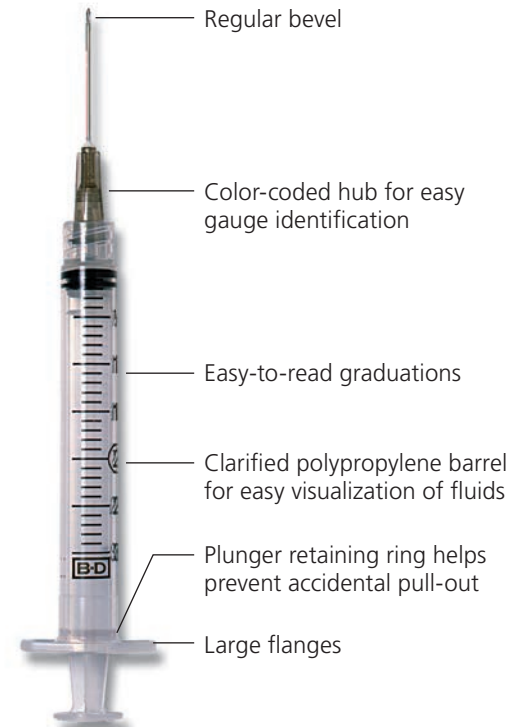


Color-coded packaging allows for easy gauge identification



Color-coded hubs for easy gauge identification

Regular bevel



Regular bevel

Color-coded hub for easy gauge identification

Easy-to-read graduations

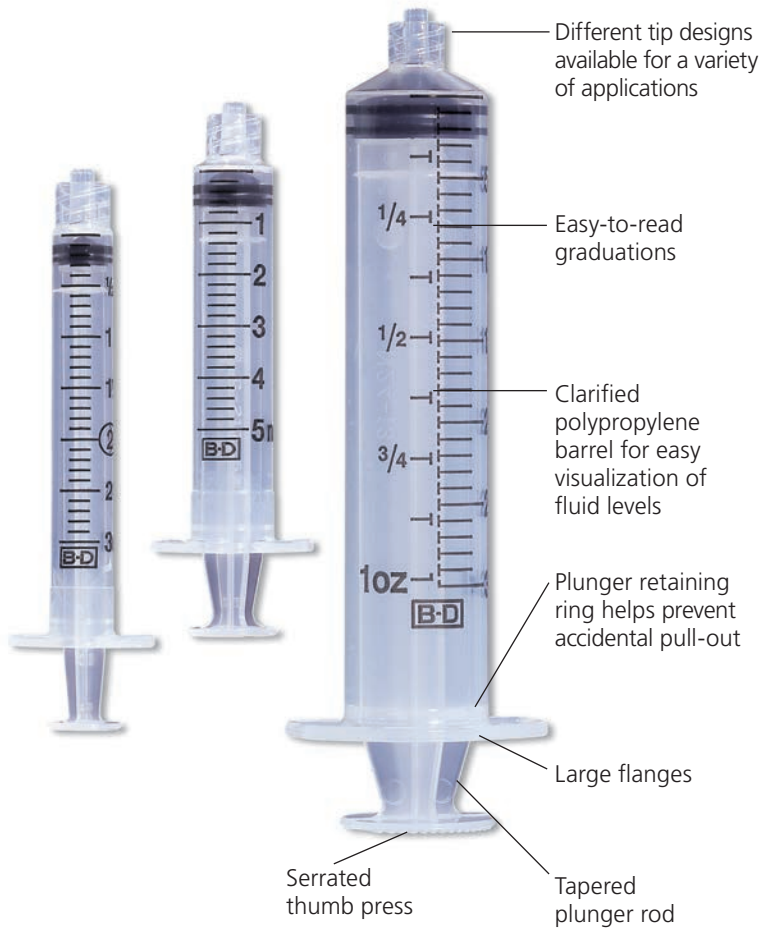
Clarified polypropylene barrel for easy visualization of fluids

Plunger retaining ring helps prevent accidental pull-out

Large flanges

BD Hypodermic Products

BD Syringes



Reference No.	Product Description	Packaging
1 mL Syringes Only		
309659	1 mL TB Syringe, Slip Tip	200/box, 1600/case
309628	1 mL Syringe, BD Luer-Lok™ Tip	100/box, 800/case
3 mL Syringes Only		
309656	3 mL Syringe, Slip Tip	200/box, 800/case
309657	3 mL Syringe, BD Luer-Lok™ Tip	200/box, 800/case
5 mL Syringes Only		
309647	5 mL Syringe, Slip Tip	125/box, 500/case
309646	5 mL Syringe, BD Luer-Lok™ Tip	125/box, 500/case
10 mL Syringes Only		
301604	10 mL Syringe, Slip Tip	100/box, 400/case
309604	10 mL Syringe, BD Luer-Lok™ Tip	100/box, 400/case
305482	10 mL Syringe, Eccentric Tip	100/box, 400/case
20 mL Syringes Only		
302831	20 mL Syringe, Slip Tip	48/box, 192/case
302830	20 mL Syringe, BD Luer-Lok™ Tip	48/box, 192/case
300613	20 mL Syringe, Eccentric Tip	120/box, 480/case
30 mL Syringes Only		
302833	30 mL Syringe, Slip Tip	56/box, 224/case
302832	30 mL Syringe, BD Luer-Lok™ Tip	56/box, 224/case
60 mL Syringes Only		
309654	60 mL Syringe, Slip Tip	40/box, 160/case
309653	60 mL Syringe, BD Luer-Lok™ Tip	40/box, 160/case
300866	60 mL Syringe, Eccentric Tip	60/box, 240/case
2 oz Syringe Only		
309620	2 oz Syringe, Catheter Tip with Shield	40/box, 160/case

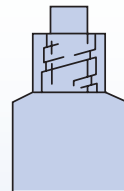
Types of Syringe Tips:

Different tip designs available for a variety of applications



Slip Tip
Sizes:

1 mL 20 mL
3 mL 30 mL
5 mL 60 mL
10 mL



BD Luer-Lok™ Tip
Sizes:

1 mL 20 mL
3 mL 30 mL
5 mL 60 mL
10 mL



Eccentric Tip
Sizes:

10 mL
20 mL
60 mL



Catheter Tip
Sizes:

2 oz. only

BD Hypodermic Products

BD Oral Syringes

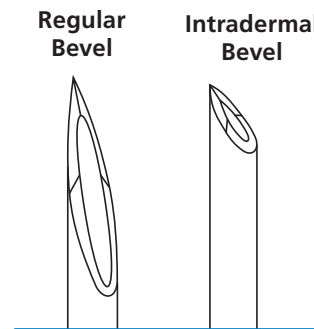
Reference No.	Product Description	Packaging
Clear Oral Syringes with Tip Cap		
305217	1 mL Oral Syringe	100/box, 500/case
305220	3 mL Oral Syringe	100/box, 500/case
305218	5 mL Oral Syringe	100/box, 500/case
305219	10 mL Oral Syringe	100/box, 500/case
Amber Oral Syringes with Tip Cap		
305207	1 mL Oral Syringe	100/box, 500/case
305210	3 mL Oral Syringe	100/box, 500/case
305208	5 mL Oral Syringe	100/box, 500/case
305209	10 mL Oral Syringe	100/box, 500/case



BD Needles

Reference No.	Product Description	Packaging
BD PrecisionGlide™ Needles*		
305106	30 G x ½ in. Needle	100/box, 1000/case
305128	30 G x 1 in. Needle	100/box, 1000/case
305109	27 G x ½ in. Needle	100/box, 1000/case
305136	27 G x 1 ¼ in. Needle	100/box, 1000/case
305110	26 G x ⅜ in. Needle, Intradermal Bevel	100/box, 1000/case
305111	26 G x ½ in. Needle	100/box, 1000/case
305122	25 G x ⅝ in. Needle	100/box, 1000/case
305124	25 G x 7/8 in. Needle	100/box, 1000/case
305125	25 G x 1 in. Needle	100/box, 1000/case
305127	25 G x 1 ½ in. Needle	100/box, 1000/case
305143	23 G x ¾ in. Needle	100/box, 1000/case
305145	23 G x 1 in. Needle	100/box, 1000/case
305120	23 G x 1 ¼ in. Needle	100/box, 1000/case
305155	22 G x 1 in. Needle	100/box, 1000/case
305142	22 G x ¾ in. Needle	100/box, 1000/case
305156	22 G x 1 ½ in. Needle	100/box, 1000/case
305165	21 G x 1 in. Needle	100/box, 1000/case
305167	21 G x 1 ½ in. Needle	100/box, 1000/case
305129	21 G x 2 in. Needle	100/box, 1000/case
305175	20 G x 1 in. Needle	100/box, 1000/case
305176	20 G x 1 ½ in. Needle	100/box, 1000/case
305186	19 G x 1 in. Needle, Thin Wall	100/box, 1000/case
305187	19 G x 1 ½ in. Needle, Thin Wall	100/box, 1000/case
305195	18 G x 1 in. Needle	100/box, 1000/case
305196	18 G x 1 ½ in. Needle	100/box, 1000/case
305197	16 G x 1 in. Needle	100/box, 1000/case
305198	16 G x 1 ½ in. Needle	100/box, 1000/case
BD Blunt Fill Needles		
305180	18 G x 1 ½ in., Blunt Fill Needle	100/box, 1000/case
305211	18 G x 1 ½ in., Blunt Filter Needle (5 Micron)	100/box, 1000/case

A broad line of needle gauges and lengths are available for a variety of applications.



30G

27G

26G

25G

24G

23G

22G

21G

20G

19G

18G

16G

BD Conventional Needle & Syringe Color Chart

*all needles are regular bevel unless otherwise noted

BD Hypodermic Products

BD Safety-Lok™ Syringes



Reference No.	Product Description	Packaging
BD Safety-Lok™ Syringes		
309606	3 mL Syringe Only	100/box, 800/case
309592	3 mL Syringe with 25 G x 5/8 in. Needle	100/box, 800/case
309594	3 mL Syringe with 23 G x 1 in. Needle	100/box, 800/case
309593	3 mL Syringe with 22 G x 1 1/2 in. Needle	100/box, 800/case
309596	3 mL Syringe with 22 G x 1 in. Needle	100/box, 800/case
309595	3 mL Syringe with 21 G x 1 1/2 in. Needle	100/box, 800/case
305558	5 mL Syringe Only	50/box, 400/case
305561	5 mL Syringe with 21 G x 1 1/2 in. Needle	50/box, 400/case
305559	10 mL Syringe Only	50/box, 400/case
305564	10 mL Syringe with 21 G x 1 1/2 in. Needle	50/box, 400/case

BD SafetyGlide™ Needles



Reference No.	Product Description	Packaging
BD SafetyGlide™ Needles		
305921	27 G x 5/8 in. Needle	50/box, 500/case
305901	25 G x 5/8 in. Needle	50/box, 500/case
305916	25 G x 1 in. Needle	50/box, 500/case
305902	23 G x 1 in. Needle	50/box, 500/case
305900	22 G x 1 1/2 in. Needle	50/box, 500/case
305915	21 G x 1 in. Needle	50/box, 500/case
305917	21 G x 1 1/2 in. Needle	50/box, 500/case
305918	18 G x 1 1/2 in. Needle	50/box, 500/case
BD SafetyGlide™ Needles with BD Luer-Lok™ Syringes		
305927	1 mL Syringe with 27 G x 5/8 in. Needle	50/box, 400/case
305903	1 mL Syringe with 25 G x 5/8 in. Needle	50/box, 400/case
305904	3 mL Syringe with 25 G x 5/8 in. Needle	50/box, 400/case
305924	3 mL Syringe with 25 G x 1 in. Needle	50/box, 400/case
305905	3 mL Syringe with 23 G x 1 in. Needle	50/box, 400/case
305906	3 mL Syringe with 22 G x 1 1/2 in. Needle	50/box, 400/case
305909	3 mL Syringe with 21 G x 1 1/2 in. Needle	50/box, 400/case
305907	5 mL Syringe with 22 G x 1 1/2 in. Needle	50/box, 400/case
305908	10 mL Syringe with 22 G x 1 1/2 in. Needle	50/box, 400/case

BD Hypodermic Products

BD Eclipse™ Needles



Reference No.	Product Description	Packaging
BD Eclipse™ Needles		
305757	30 G x ½ in. Needle	100/box, 1200/case
305758	27 G x ½ in. Needle	100/box, 1200/case
305759	25 G x ⅝ in. Needle	100/box, 1200/case
305761	25 G x 1 in. Needle	100/box, 1200/case
305767	25 G x 1 ½ in. Needle	100/box, 1200/case
305762	23 G x 1 in. Needle	100/box, 1200/case
305768	22 G x 1 in. Needle	100/box, 1200/case
305763	22 G x 1 ½ in. Needle	100/box, 1200/case
305764	21 G x 1 in. Needle	100/box, 1200/case
305765	21 G x 1 ½ in. Needle	100/box, 1200/case
305766	18 G x 1 ½ in. Needle	100/box, 1200/case
BD Eclipse™ Needles with BD Luer-Lok™ Syringes		
305778	1 mL Syringe with 30 G x ½ in. Needle	50/box, 300/case
305789	1 mL Syringe with 27 G x ½ in. Needle	50/box, 300/case
305780	1 mL Syringe with 25 G x ⅝ in. Needle	50/box, 300/case
305781	3 mL Syringe with 25 G x ⅝ in. Needle	50/box, 300/case
305787	3 mL Syringe with 25 G x 1 in. Needle	50/box, 300/case
305782	3 mL Syringe with 23 G x 1 in. Needle	50/box, 300/case
305788	3 mL Syringe with 22 G x 1 in. Needle	50/box, 300/case
305783	3 mL Syringe with 22 G x 1 ½ in. Needle	50/box, 300/case
305779	3 mL Syringe with 21 G x 1 in. Needle	50/box, 300/case
305784	3 mL Syringe with 21 G x 1 ½ in. Needle	50/box, 300/case
305785	5 mL Syringe with 22 G x 1 ½ in. Needle	50/box, 300/case
305786	10 mL Syringe with 22 G x 1 ½ in. Needle	50/box, 300/case

BD Integra™ Syringes

with Retracting
BD PrecisionGlide™ Needle



Reference No.	Product Description	Packaging
BD Integra™ 3 mL Syringes with Detachable Needles		
305269	3 mL Syringe with 25 G x ⅝ in. Needle	100/box, 400/case
305270	3 mL Syringe with 25 G x 1 in. Needle	100/box, 400/case
305271	3 mL Syringe with 23 G x 1 in. Needle	100/box, 400/case
305272	3 mL Syringe with 22 G x 1 ½ in. Needle	100/box, 400/case
305273	3 mL Syringe with 21 G x 1 in. Needle	100/box, 400/case
305274	3 mL Syringe with 21 G x 1 ½ in. Needle	100/box, 400/case

BD Insulin Products

Reference No.	Product Description	Packaging
1 mL Insulin Syringes		
329412	1 mL 27 G x 5/8 in. U-100 BD Micro-Fine™ IV	100/box, 500/case
329410	1 mL 28 G x 1/2 in. U-100 BD Micro-Fine™ IV	100/box, 500/case
329424	1 mL 28 G x 1/2 in. U-100 BD Micro-Fine™ IV (Orange)	100/box, 500/case
328418	1 mL 31 G x 5/16 in. U-100 BD Ultra-Fine™ Short	100/box, 500/case
BD Lo-Dose™ Insulin Syringes with Permanently Attached Needles		
328438	3/10 mL, 31 G x 5/16 in. U-100 BD Ultra-Fine™ Short	100/box, 500/case
309301	3/10 mL, 29 G x 1/2 in. U-100 BD Ultra-Fine™	200/box, 1600/case
328430	3/10 mL, 28 G x 1/2 in. U-100 BD Micro-Fine™ IV	100/box, 500/case
328468	1/2 mL, 30 G x 5/16 in. U-100 BD Ultra-Fine™ Short	100/box, 500/case
329465	1/2 mL, 28 G x 1/2 in. U-100 BD Micro-Fine™ IV	100/box, 500/case
28 G Insulin Syringes in Blister Pack		
329461	1/2 mL BD Lo-Dose™ Insulin Syringe 28 G x 1/2 in. U-100 BD Micro-Fine™ IV (Orange)	100/box, 500/case
329420	1 mL Insulin Syringe 28 G x 1/2 in. U-100 BD Micro-Fine™ IV (Single-Unit Scale)	100/box, 500/case

BD Safety-Lok™ Syringes



Reference No.	Product Description	Packaging
BD Safety-Lok™ Syringes		
329464	1 mL Insulin Syringe with Permanently Attached 29 G x 1/2 in. U-100 BD Ultra-Fine™ Needle	100/box, 500/case
305553	1 mL Tuberculin Syringe with Permanently Attached 27 G x 1/2 in. Needle	100/box, 500/case
305554	1 mL Tuberculin Syringe with Permanently Attached 25 G x 5/8 in. Needle	100/box, 500/case

BD SafetyGlide™ Syringes



Reference No.	Product Description	Packaging
BD SafetyGlide™ Syringes for Insulin, TB and Allergy		
305930	1 mL Insulin Syringe with 29 G x 1/2 in. Needle	100/box, 400/case
305932	1/2 mL Insulin Syringe with 29 G x 1/2 in. Needle	100/box, 400/case
305935	3/10 mL Insulin Syringe with 29 G x 1/2 in. Needle	100/box, 400/case
305934	1/2 mL Insulin Syringe with 30 G x 5/16 in. Needle, Thin Wall	100/box, 400/case
305937	3/10 mL Insulin Syringe with 31 G x 5/16 in. Needle, Thin Wall	100/box, 400/case
305945	1 mL Tuberculin Syringe with 27 G x 1/2 in. Needle	100/box, 400/case
305946	1 mL Tuberculin Syringe with 26 G x 3/8 in. Needle (IB)	100/box, 400/case
305950	1 mL Allergist Tray with 27 G x 1/2 in. Needle (RB)	25/tray, 1000/case
305951	1 mL Allergist Tray with 26 G x 3/8 in. Needle (IB)	25/tray, 1000/case

(IB) Intradermal Bevel
(RB) Regular Bevel

BD Infusion Therapy Products



BD Insyte™ Autoguard™ BC Shielded IV Catheter with Blood Control Technology

BD Insyte™ Autoguard™ BC Shielded IV Catheter is clinically shown to reduce the risk of blood exposure by 95%.^{1*} In a clinical study, 98% of clinicians stated they had no risk of blood exposure during insertion when using BD Insyte™ Autoguard™ BC,¹ which means:

- Less risk of exposure to bloodborne pathogens
- Virtually no clean up of blood spills
- No need to worry about stopping blood¹
- Lower costs related to clean-up supplies

Incorporates all the standard benefits of BD Insyte™ Autoguard™ catheters with BD Instaflash™ needle technology in 20, 22 and 24 gauge sizes along with push-button shielding technology and BD Vialon™ biomaterial.

Reference No.	Description	Packaging
Non-Winged		
382512	24 G x 0.75 in. (0.7 mm x 19 mm) Yellow	50/box 200/case
382523	22 G x 1.00 in. (0.9 mm x 25 mm) Blue	50/box 200/case
382533	20 G x 1.00 in. (1.1 mm x 25 mm) Pink	50/box 200/case
382534	20 G x 1.16 in. (1.1 mm x 30 mm) Pink	50/box 200/case
382537	20 G x 1.88 in. (1.1 mm x 48 mm) Pink	50/box 200/case
382544	18 G x 1.16 in. (1.3 mm x 30 mm) Green	50/box 200/case
382547	18 G x 1.88 in. (1.3 mm x 48 mm) Green	50/box 200/case
382554	16 G x 1.16 in. (1.7 mm x 30 mm) Gray	50/box 200/case
382557	16 G x 1.77 in. (1.7 mm x 45 mm) Gray	50/box 200/case
With Wings		
382612	24 G x 0.75 in. (0.7 mm x 19 mm) Yellow	50/box 200/case
382623	22 G x 1.00 in. (0.9 mm x 25 mm) Blue	50/box 200/case
382633	20 G x 1.00 in. (1.1 mm x 25 mm) Pink	50/box 200/case
382634	20 G x 1.16 in. (1.1 mm x 30 mm) Pink	50/box 200/case
382637	20 G x 1.88 in. (1.1 mm x 48 mm) Pink	50/box 200/case
382644	18 G x 1.16 in. (1.3 mm x 30 mm) Green	50/box 200/case
382647	18 G x 1.88 in. (1.3 mm x 48 mm) Green	50/box 200/case
382654	16 G x 1.16 in. (1.7 mm x 30 mm) Gray	50/box 200/case
382657	16 G x 1.77 in. (1.7 mm x 45 mm) Gray	50/box 200/case



BD Insyte™ Autoguard™ Shielded IV Catheter

BD Insyte™ Autoguard™ Shielded IV Catheters mean added safety for you with push-button shielding technology that has been shown to reduce needlestick injuries by 95%.^{2**} The unique BD Instaflash™ needle technology in the 20, 22 and 24 gauge sizes is designed to reduce hit-and-miss insertion by confirming vessel entry. Made of clinically proven BD Vialon™ biomaterial designed to soften in the vein and provide greater kink resistance³ and longer dwell time⁴ compared to FEP polymer.

Reference No.	Description	Packaging
Non-Winged		
381412	24 G x 0.75 in. (0.7 mm x 19 mm) Yellow	50/box, 200/case
381423	22 G x 1.00 in. (0.9 mm x 25 mm) Blue	50/box, 200/case
381433	20 G x 1.00 in. (1.1 mm x 25 mm) Pink	50/box, 200/case
381434	20 G x 1.16 in. (1.1 mm x 30 mm) Pink	50/box, 200/case
381437	20 G x 1.88 in. (1.1 mm x 48 mm) Pink	50/box, 200/case
381444	18 G x 1.16 in. (1.3 mm x 30 mm) Green	50/box, 200/case
381447	18 G x 1.88 in. (1.3 mm x 48 mm) Green	50/box, 200/case
381454	16 G x 1.16 in. (1.7 mm x 30 mm) Gray	50/box, 200/case
381457	16 G x 1.77 in. (1.7 mm x 45 mm) Gray	50/box, 200/case
381467	14 G x 1.75 in. (2.1 mm x 45 mm) Orange	50/box, 200/case
With Wings		
381512	24 G x 0.75 in. (0.7 mm x 19 mm) Yellow	50/box, 200/case
381523	22 G x 1.00 in. (0.9 mm x 25 mm) Blue	50/box, 200/case
381533	20 G x 1.00 in. (1.1 mm x 25 mm) Pink	50/box, 200/case
381534	20 G x 1.16 in. (1.1 mm x 30 mm) Pink	50/box, 200/case
381537	20 G x 1.88 in. (1.1 mm x 48 mm) Pink	50/box, 200/case
381544	18 G x 1.16 in. (1.3 mm x 30 mm) Green	50/box, 200/case
381547	18 G x 1.88 in. (1.3 mm x 48 mm) Green	50/box, 200/case
381554	16 G x 1.16 in. (1.7 mm x 30 mm) Gray	50/box, 200/case
381557	16 G x 1.77 in. (1.7 mm x 45 mm) Gray	50/box, 200/case

*Compared to non-blood control peripheral IV catheters.

**Compared to non-safety peripheral IV catheters.

¹Onia R, Eshun-Wilson I, Arce C, et al. Evaluation of a new safety peripheral IV catheter designed to reduce mucocutaneous blood exposure. *Curr Med Res Opin.* 2011;27(7):1339-1346.

²Mendelson MH, Lin-Chen BY, Finkelstein-Blond L, Bailey E, Kogan G. Evaluation of a safety IV catheter (IVC) (Becton Dickinson, Insyte Autoguard): final report [abstract]. Eleventh Annual Scientific Meeting Society for Healthcare Epidemiology of America. 2001.

³Gaukroger PB, Roberts JG, Manners TA. Infusion thrombophlebitis: a prospective comparison of 645 Vialon and Teflon cannulae in anaesthetic and postoperative use. *Anaesthesia and Intensive Care.* 1988;16:265-271.

⁴Maki DG, Ringer M. Risk factors for infusion-related phlebitis with small peripheral venous catheters. *Annals of Internal Medicine.* 1991;114:845-854.

BD Infusion Therapy Products



BD Nexiva™ Closed IV Catheter System

BD Nexiva™ Closed IV Catheter System is a unique all-in-one catheter, extension set and built-in stabilization platform designed to:

- Reduce risk of needlestick injury and minimize blood exposure
- Minimize the potential for contamination as extension is pre-attached
- Minimize catheter movement

On the dual port, a second port allows for simultaneous administration of compatible fluids and medications near the insertion site.

Reference No.	Description	Packaging
Dual Port		
383530	24 G x 0.56 in. Dual Port (0.7 mm x 14 mm) Yellow	20/box 80/case
383531	24 G x 0.75 in. Dual Port (0.7 mm x 19 mm) Yellow	20/box 80/case
383532	22 G x 1.00 in. Dual Port (0.9 mm x 25 mm) Blue	20/box 80/case
383536	20 G x 1.00 in. Dual Port (1.1 mm x 25 mm) Pink	20/box 80/case
383537	20 G x 1.25 in. Dual Port (1.1 mm x 31 mm) Pink	20/box 80/case
383538	20 G x 1.75 in. Dual Port (1.1 mm x 45 mm) Pink	20/box 80/case
383539	18 G x 1.25 in. Dual Port (1.3 mm x 31 mm) Green	20/box 80/case
383540	18 G x 1.75 in. Dual Port (1.3 mm x 45 mm) Green	20/box 80/case
Single Port		
383510	24 G x 0.56 in. Single Port (0.7 mm x 14 mm) Yellow	20/box 80/case
383511	24 G x 0.75 in. Single Port (0.7 mm x 19 mm) Yellow	20/box 80/case
383512	22 G x 1.00 in. Single Port (0.9 mm x 25 mm) Blue	20/box, 80/case
383516	20 G x 1.00 in. Single Port (1.1 mm x 25 mm) Pink	20/box, 80/case
383517	20 G x 1.25 in. Single Port (1.1 mm x 31 mm) Pink	20/box, 80/case
383518	20 G x 1.75 in. Single Port (1.1 mm x 45 mm) Pink	20/box 80/case
383519	18 G x 1.25 in. Single Port (1.3 mm x 31 mm) Green	20/box 80/case
383520	18 G x 1.75 in. Single Port (1.3 mm x 45 mm) Green	20/box 80/case



BD Saf-T-Intima™ Closed IV Catheter System

BD Saf-T-Intima™ Closed IV Catheter System made of BD Vialon™ biomaterial is part of our suite of safety catheters that are designed to reduce risk of needlestick injury and minimize blood exposure during venipuncture.

For added versatility, the PRN adapter can be removed to allow for the use of any needleless closed IV access device. The BD Saf-T-Intima™ Closed IV Catheter System with “Y” adapter allows for prepriming and flushing during venipuncture.

Reference No.	Description	Packaging
With Removable PRN Adapter		
383312	24 G x 0.75 in. (0.7 mm x 19 mm) Yellow	25/box, 200/case
383322	22 G x 0.75 in. (0.9 mm x 19 mm) Blue	25/box, 200/case
383335	20 G x 1.00 in. (1.1 mm x 25 mm) Pink	25/box, 200/case
With Y Adapter		
383313	24 G x 0.75 in. (0.7 mm x 19 mm) Yellow	25/box, 200/case
383323	22 G x 0.75 in. (0.9 mm x 19 mm) Blue	25/box, 200/case
383336	20 G x 1.00 in. (1.1 mm x 25 mm) Pink	25/box, 200/case
383346	18 G x 1.00 in. (1.3 mm x 25 mm) Green	25/box, 200/case

BD Infusion Therapy Products

BD Insyte™ IV Catheter with BD Vialon™ Biomaterial



BD Insyte-W™ IV Catheter with BD Vialon™ Biomaterial and Wings



BD Angiocath™ IV Catheter with FEP Polymer

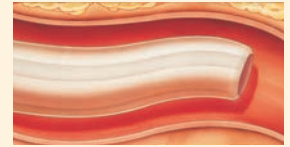


Reference No.	Product Description	Packaging
BD Insyte™ IV Catheters with BD Vialon™ Biomaterial		
381212	24 G x 0.75 in. (Yellow)	50/box, 200/case
381223	22 G x 1.00 in. (Blue)	50/box, 200/case
381233	20 G x 1.00 in. (Pink)	50/box, 200/case
381234	20 G x 1.16 in. (Pink)	50/box, 200/case
381237	20 G x 1.88 in. (Pink)	50/box, 200/case
381244	18 G x 1.16 in. (Green)	50/box, 200/case
381247	18 G x 1.88 in. (Green)	50/box, 200/case
381254	16 G x 1.16 in. (Gray)	50/box, 200/case
381257	16 G x 1.77 in. (Gray)	50/box, 200/case
381267	14 G x 1.75 in. (Orange)	50/box, 200/case
BD Insyte-W™ IV Catheters with BD Vialon™ Biomaterial and Wings		
381312	24 G x 0.75 in. (Yellow)	50/box, 200/case
381323	22 G x 1.00 in. (Blue)	50/box, 200/case
381333	20 G x 1.00 in. (Pink)	50/box, 200/case
381334	20 G x 1.16 in. (Pink)	50/box, 200/case
381337	20 G x 1.88 in. (Pink)	50/box, 200/case
381344	18 G x 1.16 in. (Green)	50/box, 200/case
381347	18 G x 1.88 in. (Green)	50/box, 200/case
381354	16 G x 1.16 in. (Gray)	50/box, 200/case
381357	16 G x 1.77 in. (Gray)	50/box, 200/case
BD Insyte-N™ IV Catheters with BD Vialon™ Biomaterial		
381211	24 G x 0.56 in. (Yellow)	50/box, 200/case
381311	24 G x 0.56 in. (Yellow) with Wings	50/box, 200/case

All BD catheters incorporate the sharp BD needle technology and a tapered catheter tip to facilitate penetration and insertion. Gauge sizes are color-coded for easy identification.

Catheters made with clinically proven BD Vialon™ Biomaterial

- Designed to soften in the vein
- Greater kink resistance¹ and longer dwell time² compared to FEP polymer
- Portfolio of products to meet your needs



BD Insyte-N™ and BD Angiocath-N™ IV catheters are designed with BD Instaflash™ needle technology to provide immediate visual confirmation of vessel entry and designed to enhance first-stick success.

Reference No.	Product Description	Packaging
BD Angiocath™ IV Catheters		
381112	24 G x 0.75 in. (Yellow)	50/box, 200/case
381123	22 G x 1.00 in. (Blue)	50/box, 200/case
381137	20 G x 1.88 in. (Pink)	50/box, 200/case
381147	18 G x 1.88 in. (Green)	50/box, 200/case
381157	16 G x 1.88 in. (Gray)	50/box, 200/case
381167	14 G x 1.88 in. (Orange)	50/box, 200/case
BD Angiocath™ Catheters for Special Placement		
382258	16 G x 3.25 in. (Gray)	10/box, 50/case
382259	16 G x 5.25 in. (Gray)	10/box, 50/case
382268	14 G x 3.25 in. (Orange)	10/box, 50/case
382269	14 G x 5.25 in. (Orange)	10/box, 50/case
382277	12 G x 3.00 in. (Light Blue)	10/box, 50/case
382287	10 G x 3.00 in. (Tan)	10/box, 50/case

¹Gaukroger PB, Roberts JG, Manners TA. Infusion thrombophlebitis: A prospective comparison of 645 Vialon® and Teflon® cannulae in anaesthetic and postoperative use. *Anesthesia and Intensive Care*. 1988;16:265-271.

²Maki D, Ringer M. Risk factors for infusion-related phlebitis with small peripheral venous catheters. *Annals of Internal Medicine*. 1991;114:845-854.

BD PosiFlush™ Prefilled Syringes

BD PosiFlush™ Prefilled Flush Syringes are syringes specifically designed for flushing and are available in a wide variety of sizes and solutions to meet all your flush protocol requirements.



Reference No.	Product Description	NHRIC No.	Packaging
BD PosiFlush™ Heparin Lock Syringes			
306413	3 mL – 30 units/3mL (10 units/mL)	8290-306413	30/box, 480/case
306414	5 mL – 50 units/5mL (10 units/mL)	8290-306414	30/box, 480/case
306423	3 mL – 300 units/3mL (100 units/mL)	8290-306423	30/box, 480/case
306424	5 mL – 500 units/5mL (100 units/mL)	8290-306424	30/box, 480/case

Reference No.	Product Description	NHRIC No.	Packaging
BD PosiFlush™ Saline Syringes, 0.9% Sodium Chloride			
306544	3 mL	8290-306544	30/box, 480/case
306545	5 mL	8290-306545	30/box, 480/case
306546	10 mL	8290-306546	30/box, 480/case
306549	3 mL with Blunt Plastic Cannula	8290-306549	30/box, 480/case
306550	5 mL with Blunt Plastic Cannula	8290-306550	30/box, 480/case
306551	10 mL with Blunt Plastic Cannula	8290-306551	30/box, 480/case
BD PosiFlush™ Sterile Field Saline Syringe			
306553	10 mL	8290-306553	30/box, 240/case

BD Vacutainer® Blood Collection Products

BD Vacutainer® Push Button Blood Collection Sets

The BD Vacutainer® Push Button Blood Collection Set offers split-second protection for that single moment that could potentially change your life. The push-button safety mechanism instantly helps protect you against needlestick injury. It is also offered with a pre-attached holder for added convenience and OSHA single-use holder compliance.



Reference No.	Product Description	Color	Packaging
BD Vacutainer® Push Button Blood Collection Sets			
367338	With Luer, 21 G, 7 in. Tubing	Green	50/box, 200/case
367344	With Luer, 21 G, 12 in. Tubing	Green	50/box, 200/case
367326	Without Luer, 21 G, 12 in. Tubing	Green	50/box, 200/case
367336	With Luer, 23 G, 7 in. Tubing	Light Blue	50/box, 200/case
367342	With Luer, 23 G, 12 in. Tubing	Light Blue	50/box, 200/case
367324	Without Luer, 23 G, 12 in. Tubing	Light Blue	50/box, 200/case
367335	With Luer, 25 G, 7 in. Tubing	Dark Blue	50/box, 200/case
367341	With Luer, 25 G, 12 in. Tubing	Dark Blue	50/box, 200/case
367323	Without Luer, 25 G, 12 in. Tubing	Dark Blue	50/box, 200/case

Reference No.	Product Description	Color	Packaging
BD Vacutainer® Push Button Blood Collection Sets with Pre-Attached Holder			
367352	With Pre-Attached Holder, 21 G x 3/4 in., 12 in. Tubing	Green	20/box, 100/case
368656	With Pre-Attached Holder, 23 G x 3/4 in., 12 in. Tubing	Light Blue	20/box, 100/case
368659	With Pre-Attached Holder, 25 G x 3/4 in., 12 in. Tubing	Dark Blue	20/box, 100/case

Products cleared by U.S. FDA "For Human Use."

BD Blood Collection Products

BD Vacutainer® Needle Accessories



Reference No.	Product Description	Packaging
BD Vacutainer® Holder Options		
364815	BD Vacutainer® One Use Holder	250/bag, 1000/case
364597	BD Vacutainer® Ribbed Pediatric Tube Adapter	10/bag, 100/case
BD Vacutainer® Adapter		
367290	BD Vacutainer® Multiple-Sample Luer Adapter	100/box, 1000/case
364902	BD Vacutainer® Luer-Lok™ Access Device	200/case



BD Vacutainer® Blood Transfer Device

Reference No.	Product Description	Packaging
BD Vacutainer® Specimen Transfer and Access		
364880	BD Vacutainer® Blood Transfer Device	200/case



BD Microtainer® MAP Microtube for Automated Process

BD Microtainer® MAP Microtube for Automated Process is the first one-piece instrument-compatible microtube to offer both standard full-size patient identification labels as well as compatibility with most automated hematology instruments. The BD Microtainer® MAP tube is designed to improve the accuracy and processing time of capillary blood specimens up to 500 µL.

Reference No.	Product Description	Color	Additive	Packaging
BD Microtainer® MAP Microtube Automated Process				
363706	Plastic, 250-500 µL	Lavender	1.0 mg K ₂ EDTA	50/box, 200/case

BD Microtainer® Blood Collection Tubes



Designed for convenience and performance, BD Microtainer® capillary blood collection tubes are non-evacuated and have a texturized inner surface to improve flow and mixability. Printed fill lines avoid overfills. The wider diameter BD Microtainer® Tubes with BD Microgard™ Closure feature an integrated collection scoop and improved mixing ability.

BD Microtainer® Tubes with BD Microgard™ Closure Tube Guide and Order of Draw

Catalog #/ Closure Color	Additive	Mix by Inverting	Laboratory Use
365974 Lavender	K ₂ EDTA	10x	For whole blood hematology determinations. Tube inversions prevent clotting.
365965 Green	Lithium Heparin	10x	For plasma determinations in chemistry. Tube inversions prevent clotting.
365985 Mint Green	Lithium Heparin and Gel for plasma separation	10x	For plasma determinations in chemistry. Tube inversions prevent clotting.
365987 Mint Green			
365992 Grey	NaF/Na ₂ EDTA	10x	For glucose determinations. Tube inversions ensure proper mixing of additive and blood.
365967 Gold	Clot Activator and Gel for serum separation	5x	For serum determinations in chemistry.
365978 Gold			
365963 Red	No additive	0x	For serum determinations in chemistry, serology and blood banking.

Products cleared by U.S. FDA "For Human Use."

BD Blood Collection Products

A full line of BD Vacutainer® Venous Blood Collection Tubes are available in both glass and plastic.



Quality results begin with a quality specimen. BD Diagnostics – Preanalytical Systems is the worldwide leader of evacuated blood collection tubes. We back our products with extensive clinical expertise and educational materials to help you achieve the best possible results. BD Vacutainer® provides a full offering

of blood collection tubes in both glass and plastic. BD Vacutainer® Blood Collection Tubes are clinically proven and supported with numerous clinical studies on a vast array of analytes to document the efficacy, performance characteristics and ease of use of our tubes.

		BD Vacutainer® Tubes with Hemogard™ Closure			BD Vacutainer® Tubes with Conventional Stopper		
Color	Additive	Reference No.	Product Description	Packaging	Reference No.	Product Description	Packaging
	BD Vacutainer® SST™ Tubes Clot Activator & Gel	367983*	Plastic, 3.5 mL, 13 x 75 mm	100/box, 1000/case	367981 367988	Plastic, 3.5 mL, 13 x 75 mm Plastic, 8.5 mL, 16 x 100 mm	100/box, 1000/case
		367986	Plastic, 5.0 mL, 13 x 100 mm				
	BD Vacutainer RST™ Tubes Thrombin-based Clot Activator & Gel	368774	Plastic, 5.0 mL, 13 x 100 mm	100/box, 1000/case			
	Lithium Heparin (L)	366664* 367884 367871	Plastic, 2.0 mL, 13 x 75 mm (L) Plastic, 4.0 mL, 13 x 75 mm (L) Plastic, 4.0 mL, 13 x 75 mm (S)	100/box, 1000/case	366667* 367880 367874	Plastic, 3.0 mL, 13 x 75 mm (L) Plastic, 10.0 mL, 16 x 100 mm (L) Plastic, 10.0 mL, 16 x 100 mm (S)	100/box, 1000/case
	Sodium Heparin (S)	367671*	Glass, 2.0 mL, 13 x 75 mm (S)	100/box, 1000/case			
	Silicone-Coated with Clot Activator	367812 367815	Plastic, 4.0 mL, 13 x 75 mm Plastic, 6.0 mL, 13 x 100 mm	100/box, 1000/case	366668* 367820	Plastic, 3.0 mL, 13 x 75 mm Plastic, 10.0 mL, 16 x 100 mm	100/box, 1000/case
	Silicone-Coated						
	Spray-coated K ₂ EDTA (Plastic)	367841* 367856 367861 366643	Plastic, 2.0 mL, 13 x 75 mm Plastic, 3.0 mL, 13 x 75 mm Plastic, 4.0 mL, 13 x 75 mm Plastic, 10.0 mL, 16 x 100 mm	100/box, 1000/case	367844	Plastic, 4.0 mL, 13 x 75 mm	100/box, 1000/case
	Liquid K ₃ EDTA (Glass)				364300*	Glass, 2.0 mL, 10.25 x 64 mm	100/box, 1000/case
	BD Vacutainer® PST™ Tubes/ Lithium Heparin & Gel	367960* 367962	Plastic, 3.0 mL, 13 x 75 mm Plastic, 4.5 mL, 13 x 100 mm	100/box, 1000/case	368056 367964	Plastic, 3.0 mL, 13 x 75 mm Plastic, 8.0 mL, 16 x 100 mm	100/box, 1000/case
	Buffered Sodium Citrate 0.105M	363080* 363083	Plastic, 1.8 mL, 13 x 75 mm Plastic, 2.7 mL, 13 x 75 mm	100/box, 1000/case			
		369714	Glass, 4.5 mL, 13 x 75 mm	100/box, 1000/case	366392 366393	Glass, 1.8 mL, 10.25 x 47 mm Glass, 2.7 mL, 10.25 x 64 mm	100/box, 1000/case
	Fluoride Tubes with Glycolytic Inhibitor	367921* 367587* 367922 367925	Plastic, 2.0 mL, 13 x 75 mm Plastic, 2.0 mL, 13 x 75 mm Plastic, 4.0 mL, 13 x 75 mm Plastic, 6.0 mL, 13 x 100 mm	100/box, 1000/case			
	No Additive	366703*	Plastic, 3.0 mL, 13 x 75 mm	100/box, 1000/case			
	No Additive	366408	Plastic, 6.0 mL, 13 x 100 mm	100/box, 1000/case			

*Low-Volume Tubes

Products cleared by U.S. FDA "For Human Use."

BD Blood Collection Products

BD Safety-Engineered Blood Collection Devices



**BD Vacutainer® Eclipse™
Blood Collection Needles**



**BD Vacutainer® Safety-Lok™
Blood Collection Sets**

Reference No.	Product Description	Packaging
BD Vacutainer® Eclipse™ Blood Collection Needles and Holder Options		
368607	21 G x 1 ¼ in. Needle	48/box, 480/case
368608	22 G x 1 ¼ in. Needle	48/box, 480/case
368650	21 G x 1 ¼ in. Needle with Pre-Attached Holder	100/case
368651	22 G x 1 ¼ in. Needle with Pre-Attached Holder	100/case

Reference No.	Product Description	Packaging
BD Vacutainer® Urine Bulk Products		
364966	Urine Transfer Straw	100/box, 1000/case
364951	Bulk Tube: 4.0 mL, 13 x 75 mm Plastic C&S Preservative Tube	100/box, 1000/case
364979	Bulk Tube: 10.0 mL, 16 x 100 mm Plastic Round Bottom Tube for Urinalysis	100/box, 1000/case
364980	Bulk Tube: 8.0 mL, 16 x 100 mm Plastic Conical Tube for Urinalysis	100/box, 1000/case
BD Vacutainer® Tubes with Hemogard™ Closure		
366703	Plastic, 3.0 mL, 13 x 75 mm	100/box, 1000/case
366408	Plastic, 6.0 mL, 13 x 100 mm	100/box, 1000/case

Reference No.	Product Description	Packaging
BD Vacutainer® Safety-Lok™ Blood Collection Sets for Blood Collection and Infusion		
367281	with Luer, 21 G x ¾ in. 12 in. Tube	50/box, 200/case
367283	with Luer, 23 G x ¾ in. 12 in. Tube	50/box, 200/case
367285	with Luer, 25 G x ¾ in. 12 in. Tube	50/box, 200/case
367287	with Luer, 21 G x ¾ in. 7 in. Tube	50/box, 200/case
367292	with Luer, 23 G x ¾ in. 7 in. Tube	50/box, 200/case
367294	with Luer, 25 G x ¾ in. 7 in. Tube	50/box, 200/case
367296	without Luer, 21 G x ¾ in. 12 in. Tube	50/box, 200/case
367297	without Luer, 23 G x ¾ in. 12 in. Tube	50/box, 200/case
367298	without Luer, 25 G x ¾ in. 12 in. Tube	50/box, 200/case
368652	With Pre-Attached Holder, 21 G x ¾ in., 12 in. Tubing	25/box, 200/case
368653	With Pre-Attached Holder, 23 G x ¾ in., 12 in. Tubing	25/box, 200/case

Products cleared by U.S. FDA "For Human Use."

BD Anesthesia Products

BD Spinal Needles

Reference No.	Product Description	Packaging
BD Quincke Spinal Needles, Sterile, Single Use		
405081	27 G x 3 ½ in. (Gray)	25/box, 100/case
405164	26 G x 3 ½ in. (Tan)	25/box, 100/case
405170	25 G x 3 in. (Blue)	25/box, 100/case
405180	25 G x 3 ½ in. (Blue)	25/box, 100/case
400106	23 G x 3 ½ in. (Turquoise)	25/box, 100/case
405161	22 G x 1 ½ in. (Black)	25/box, 100/case
405074	22 G x 2 ½ in. (Black)	25/box, 100/case
405171	22 G x 3 in. (Black)	25/box, 100/case
405181	22 G x 3 ½ in. (Black)	25/box, 100/case
405162	20 G x 1 ½ in. (Yellow)	25/box, 100/case
405071	20 G x 2 ½ in. (Yellow)	25/box, 100/case
405172	20 G x 3 in. (Yellow)	25/box, 100/case
405182	20 G x 3 ½ in. (Yellow)	25/box, 100/case
405174	18 G x 3 in. (Pink)	25/box, 100/case
405184	18 G x 3 ½ in. (Pink)	25/box, 100/case
BD Quincke Long Length Spinal Needles, Sterile, Single Use		
405234	25 G x 4 11/16 in. (Blue)	10/box, 50/case
405148	22 G x 5 in. (Black)	10/box, 50/case
405149	22 G x 7 in. (Black)	10/box, 50/case
405211	20 G x 6 in. (Yellow)	10/box, 50/case
408360	18 G x 6 in. (Pink)	10/box, 50/case

Reference No.	Product Description	Packaging
Anesthesia/Radiology/Biopsy Specialty Products		
403250	BD Catheter Adapter, Sterile, Single Use	100/box, 1000/case

Reference No.	Product Description	Packaging
BD HeimLich Chest Drain Valve, Sterile		
373460	For drainage of the pleural cavity	10/case



BD Quincke Point

Available in gauges from 18 to 27 and in lengths from 1" to 7"

BD Antimicrobial Solutions

BD E-Z Scrub™ Preoperative Scrub Brushes and Accessories

BD E-Z Scrub™ Surgical Scrub Brushes are designed to provide maximum clinical efficacy.



Reference No.	Product Description	Packaging
BD E-Z Scrub™ Surgical Scrub Brushes		
371073	BD E-Z Scrub™ with 4% CHG	30/box, 300/case
374081	BD E-Z Scrub™ with BD Ultradex™ Solution, 3% Chloroxylenol (PCMX) with emollients (brush/sponge)	30/box, 300/case
371163	BD E-Z Scrub™ with 3% Chloroxylenol (PCMX) (brush/sponge)	30/box, 300/case
372053	BD E-Z Scrub™ with Povidone Iodine, 1% available iodine (brush/sponge)	30/box, 300/case
372453	BD E-Z Scrub™ with Povidone Iodine, 0.5% available iodine (brush/sponge)	30/box, 300/case
371603	BD E-Z Scrub™ dry, no detergent (sterile, brush/sponge)	30/box, 300/case
371901	BD E-Z Scrub™ Brush Stainless Steel Dispenser Bracket	1 bracket/case

BD E-Z Scrub™ Antimicrobial Foam Solution Dispenser System




Reference No.	Product Description	Packaging
BD E-Z Scrub™ Foot Pump Foamer and Accessories		
372402	BD E-Z Scrub™ Antimicrobial Foam Solution with 4% CHG, 32 oz.	6/case
372404	BD E-Z Scrub™ Antimicrobial Foam Solution with 3% Chloroxylenol (PCMX), 32 oz.	6/case
372405	BD E-Z Scrub™ Antimicrobial Foam Solution with Povidone Iodine, 0.5% available iodine, 32 oz.	6/case
370049	BD Foot Pump Assembly	4/case
370051	BD Foot Pump Assembly (for use with CHG)	4/case
370052	BD Foot Pump Assembly [for use with Chloroxylenol (PCMX)]	4/case
370053	BD Foot Pump Assembly (for use with Povidone Iodine)	4/case
370055	BD In-Line Air Filter	12/box, 144/case
370056	BD Foot Pump Wall Bracket (including adapters)	6/case
370057	BD Foot Pump Wall Bracket Adapter for AMSCO Sinks	6/case
BD E-Z Scrub™ Hand Pump Foamer and Accessories		
372412	BD E-Z Scrub™ Antimicrobial Foam Solution with 4% CHG, 32 oz.	6/case
372415	BD E-Z Scrub™ Antimicrobial Foam Solution with 3% Chloroxylenol (PCMX), 32 oz.	6/case
372416	BD E-Z Scrub™ Antimicrobial Foam Solution with 2% CHG, 32 oz.	6/case
370013	BD Hand Pump Wall Bracket	6/case

BD Disposal Solutions

BD Sharps Collectors

BD offers a full line of sharps collectors specifically designed to meet NIOSH guidelines for safe disposal. BD introduces BD Recykleen™ brand, highlighting products made from a minimum of 20, 25, 50, 70 or 100 percent recycled plastic.

Category	Product Description	Reference No.	Color	Packaging
BD Recykleen™ Patient/Exam Room				
 	5.4 qt Patient/Exam Room Counterbalanced Door – 20% Recycled Plastic	305056 305057	Pearl Red	20/case
	3 gal Next Generation Counterbalanced Door – 20% Recycled Plastic	305053 305054	Pearl Red	10/case
Patient/Exam Room				
	5.4 qt Counterbalanced Door	305517	Red	20/case
		305543	Pearl	20/case
		305551	Clear	20/case
		305426	Red	12/case
		305427	Clear	12/case
	5.4 qt Side Entry	305428	Pearl	12/case
		305443	Red	20/case
	2 gal Counterbalanced Door	305444	Pearl	20/case
		305425	Pearl	12/case
	3 gal Counterbalanced Door	305422	Pearl	10/case
305435		Red	10/case	
Multi-Use Nestables				
	BD Recykleen™ 8 qt Regular Funnel Clear with Hinged Lid	305059	Red	24/case
	8 qt Open Clear with Hinged Lid	305343	Red	24/case
	8 qt Regular Funnel Clear with Hinged Lid	305344	Red	24/case
	14 qt Small Open Clear with Tethered Lid	305646	Red	20/case
	14 qt Open Clear with Hinged Lid	305456	Red	20/case
	14 qt Regular Funnel Clear with Tethered Lid	305464	Red	20/case
	14 qt Large Funnel Clear with Tethered Lid	305480	Red	20/case
	6 gal Open Clear Top with Hinged Lid	305457	Red	12/case
	6 gal Large Funnel Clear Top with Hinged Lid	305465	Red	12/case
Multi-Use Nestables Accessories				
 	Bracket for 8 qt, 14 qt and 6 gal (collector not included)	305485	Beige	12/case
	Wire Bracket for 8 qt	305018	Beige	6/case
	Stabilizer for 8 qt	305570	Beige	5/case

BD Disposal Solutions

Category	Product Description	Reference No.	Color	Packaging
Phlebotomy				
	1.5 qt Removal Port Top	305487	Red	36/case
	1 qt Small Open Top	305635	Red	60/case
Phlebotomy Accessories				
	Cup Bracket	305970	Black	12/case
Multi-Use One Piece Collectors				
	1.4 qt Regular Funnel with Tethered Lid	305557	Red	36/case
	3.3 qt Regular Funnel with Tethered Lid	305488	Red	24/case
	6.9 qt Regular Funnel with Tethered Lid	305489	Red	12/case
	6.9 qt Regular Funnel with Tethered Lid	300467*	Red	12/case
	8.2 qt Regular Funnel with Tethered Lid	305490	Red	12/case
	8.2 qt Regular Funnel with Tethered Lid	300470*	Red	12/case
	5 gal Open Top with Hinged Lid	305491	Red	8/case
	5 gal Open Top with Hinged Lid	300473*	Red	8/case
	5 gal Large Funnel Cap with Hinged Lid	305100	Red	10/case
	5 gal Screw Cap with Tethered Lid	305577	Red	8/case
BD Recykleen™ Large and Extra Large Collectors				
	9 gal Slide Top – 50% Recycled Plastic	305025	Red	8/case
	19 gal Slide Top – 50% Recycled Plastic	305026	Red	5/case
	9 gal Hinged Top – 50% Recycled Plastic	305024	Red	8/case
	17 gal Hinged Top – 50% Recycled Plastic	305023	Red	5/case
Large and Extra Large Collectors				
	9 gal Hinged Top	305615	Red	8/case
	9 gal Hinged Top Gasket	305601**	Red	8/case
	9 gal Slide Top	305616	Red	8/case
	9 gal Slide Top Gasket	305602**	Red	8/case
	17 gal Hinged Top	305610	Red	5/case
	17 gal Hinged Top Gasket	305665**	Red	5/case
	19 gal Slide Top	305609	Red	5/case
	19 gal Slide Top Gasket	305666**	Red	5/case



50%
Product made from
a minimum of 50%
recycled materials

*Not Autoclavable

**Meets or exceeds US DOT packaging requirements 49CFR173.24, 49CFR173.24a and 49CFR173.134.

BD Disposal Solutions

Category	Product Description	Reference No.	Color	Packaging
BD Recycleen™ Pharmaceutical Patient/Exam Room Collectors				
 20% Product made from a minimum of 20% recycled materials	 5.4 qt Patient/Exam Room Counterbalanced Door – 20% Recycled Plastic	305058	White/Blue	20/case
	 3 gal Patient/Exam Room Counterbalanced Door – 20% Recycled Plastic	305055	White/Blue	10/case
Pharmaceutical Collectors				
	5.4 qt Patient/Exam Room	305330	Blue/White	20/case
	3 gal Patient/Exam Room	305622	Blue/White	10/case
	3 gal Plug Cap	305633	Blue/White	12/case
	9 gal Hinge Top	305634	Blue/White	8/case
	9 gal Slide Top	305329	Blue/White	8/case
	17 gal Hinge Top	305028	Blue/White	5/case
	19 gal Slide Top	305328	Blue/White	5/case
Chemotherapy				
	3 gal Plug Cap	305076	Yellow	12/case
	5 gal Plug Cap	305493	Yellow	8/case
	5 gal One Piece Screw Cap	305578	Yellow	8/case
	9 gal Hinged Top	305603	Yellow	8/case
	9 gal Slide Top	305604	Yellow	8/case
	17 gal Slide Top	305614	Yellow	5/case
	19 gal Slide Top	305613	Yellow	5/case
RCRA Solid Hazardous Waste				
	3 gal Funnel with Hinged Lid	305075	Black	12/case
	3 gal Plug Cap with Hinged Lid	305066	Black	12/case
	5 gal Large Open Cap with Hinged Lid	305067	Black	8/case
	9 gal Clear Hinged Top	305068	Black	8/case
	9 gal Clear Slide Top	305069	Black	8/case
	17 gal Hinged Top	305071	Black	5/case
	19 gal Slide Top	305072	Black	5/case
RCRA Solid Hazardous Waste - DOT PGII/UN				
	13 gal DOT Port Top	305073	Black	6/case
	16 gal DOT Port Top	305074	Black	6/case

BD Disposal Solutions

Category	Product Description	Reference No.	Color	Packaging
BD Recykleen™ Cabinets				
 100% Product made from 100% recycled materials	 Cabinets for 5.4 qt Collectors Counterbalanced Door – 100% Recycled Plastic	305096 305098	Brown Green	1/case
	Cabinets for 2 & 3 gal Collectors Counterbalanced Door – 100% Recycled Plastic	305097 305099	Brown Green	1/case
Accessories				
 305021 305552	Locking Bracket for all 5.4 qt Collectors	305447	Beige	10/case
 305448	Locking Bracket for 2 & 3 gal Counterbalanced Door Collectors	305409	Beige	10/case
 305409	Wire Bracket for 2 & 3 gal Counterbalanced Door Collectors	305588	Beige	6/case
 305447	Stabilizer for all 5.4 qt Collectors	305021	Beige	5/case
 305588	Stabilizer for 2 & 3 gal Counterbalanced Door Collectors	305552	Beige	5/case
 305495	Glove Box	305448	Beige	6/case
 305497	XL Security Bracket for for 3 & 5 gal	305495	Metal	12/case
 305496	Security Bracket for 6.9 & 8.2 qt	305496	Black	12/case
 305497	Quick-Release Strap for 3.3 qt, 6.9 qt, 8.2 qt and 3 & 5 gal	305497	Black	12/case
BD Recykleen™ Trolley Accessories for Large, Extra Large and Chemotherapy Collectors				
 25% Product made from a minimum of 25% recycled materials	 Basic Trolley used with 9 gal Hinged & Slide Top – 25% Recycled Plastic	305090	Gray	1/case
	Foot-operated Trolley used with 9 gal Slide Top – 25% Recycled Plastic	305091	Gray	1/case
	Basic Trolley used with 17 & 19 gal Hinged and Slide Top – 25% Recycled Plastic	305092	Gray	1/case
	Foot-operated Trolley used with 19 gal Slide Top – 25% Recycled Plastic	305093	Gray	1/case



Contact your authorized BD Veterinary distributor
or VPL at **1.888.241.9545** (www.vpl.com)

